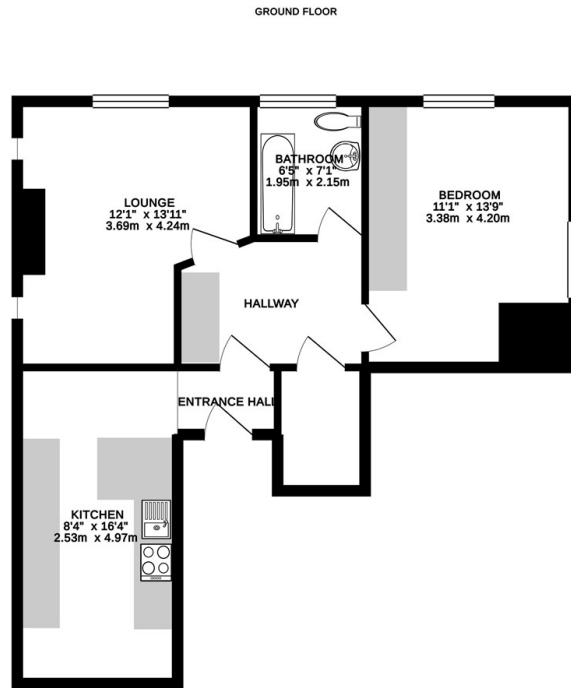




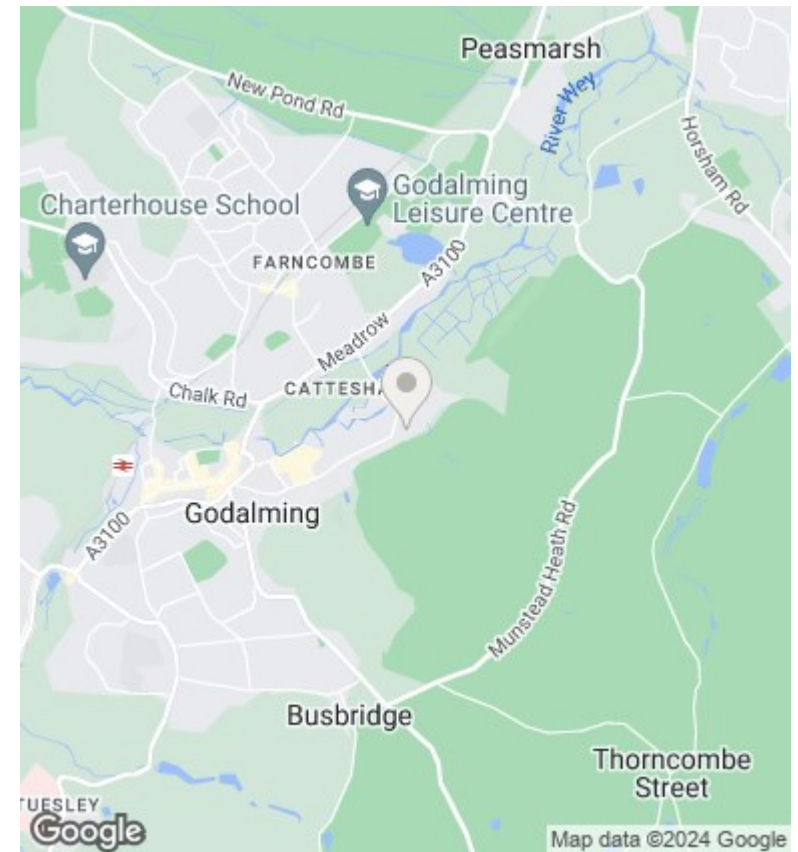
## Flat 2 Lady Garden Cottage Catteshall Lane, Godalming, Surrey, GU7

£950 PCM

- **\*\*SINGLE OCCUPANCY\*\***
- Super Spacious
- Available late August
- Part Furnished
- Large Kitchen / Diner
- Well Presented
- Bonus Walk in Wardrobe
- Off Street Parking
- First Floor
- Strictly NO PETS



Whilst every attempt has been made to ensure the accuracy of the description contained herein, measurements of doors, windows, rooms and any other parts are approximate and no responsibility is taken for any error, omission or misstatement. This plan is for illustrative purposes only and should be used as such for any prospective purchaser. The services, systems and appliances shown have not been tested and no guarantee as to their operability or efficiency can be given. Made with Mirogo ©2019



## Directions

## Viewings

Viewings by arrangement only. Call 01483 276565 to make an appointment.

## Council Tax Band

B

## EPC Rating:

D

Energy Efficiency Rating		Current	Potential
<i>Very energy efficient - lower running costs</i>			
(92 plus)	A		
(81-91)	B		
(69-80)	C		
(55-68)	D	68	72
(39-54)	E		
(21-38)	F		
(1-20)	G		
<i>Not energy efficient - higher running costs</i>			
<b>England &amp; Wales</b>		EU Directive 2002/91/EC	