



The Knightley 4 bedroom home

Homes 210, 266, 267, 270 & 331

Meridian Gate

Royston SG8 7HA | 01763 722 545

lindenhomes.co.uk

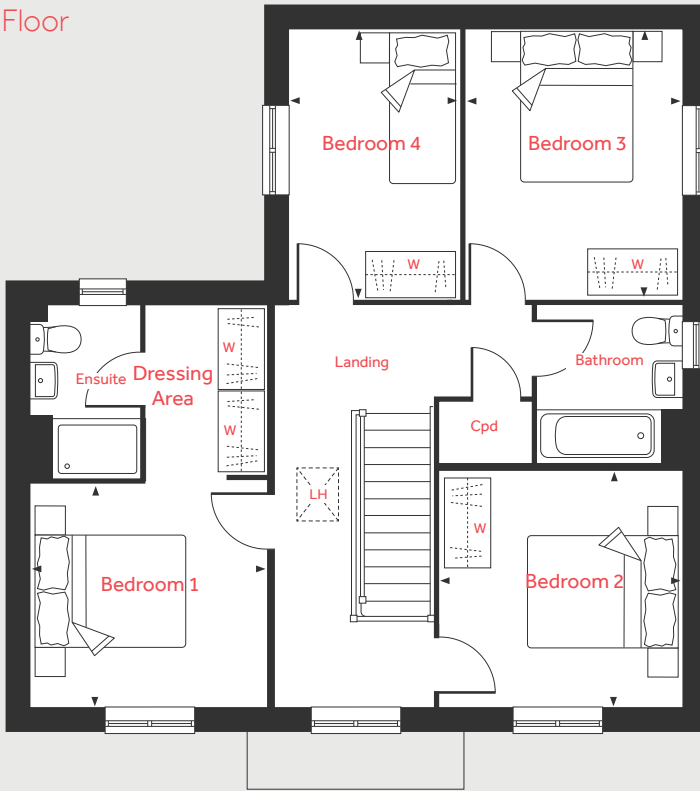
Linden
HOMES

The Knightley

4 bedroom home

Homes 210, 266, 267*, 270*
& 331 *Handed/Mirror image

First Floor



Ground Floor

Living Room
5.36m x 3.22m 17'7" x 10'7"

Dining Area
3.79m x 2.45m 12'5" x 8'1"

Kitchen
3.20m x 2.80m 10'6" x 9'2"

Family Room
3.93m x 3.21m 12'11" x 10'7"

First Floor

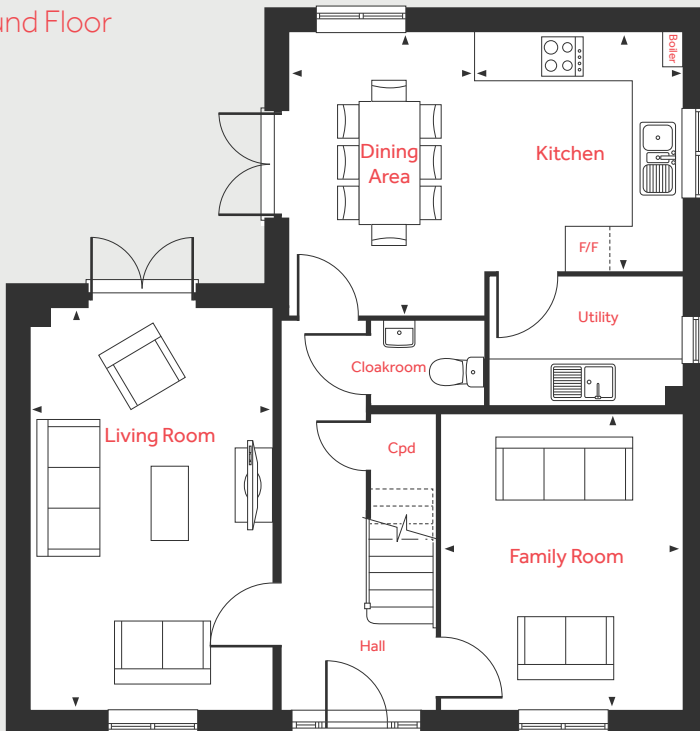
Bedroom 1
3.20m x 3.00m 10'6" x 9'10"

Bedroom 2
3.23m x 3.14m 10'6" x 10'5"

Bedroom 3
3.64m x 3.01m 11'9" x 9'11"

Bedroom 4
3.64m x 2.31m 11'9" x 7'7"

Ground Floor



LH Loft hatch W Space for wardrobe
Cpd Cupboard ◀ ▶ Measuring points
F/F Space for fridge freezer

Please note, floorplans and dimensions are taken from architectural drawings and are for guidance only. Dimensions stated are within a tolerance of plus or minus 50mm. Overall dimensions are usually stated and there may be projections into these. With our continual improvement policy we constantly review our designs and specification to ensure we deliver the best product to our customers. Computer generated images not to scale. Finishes and materials may vary and landscaping is illustrative only. Kitchen layouts are indicative only and may change. To confirm specific details on our homes please ask your Sales Consultant. January 2024.

Linden
HOMES