

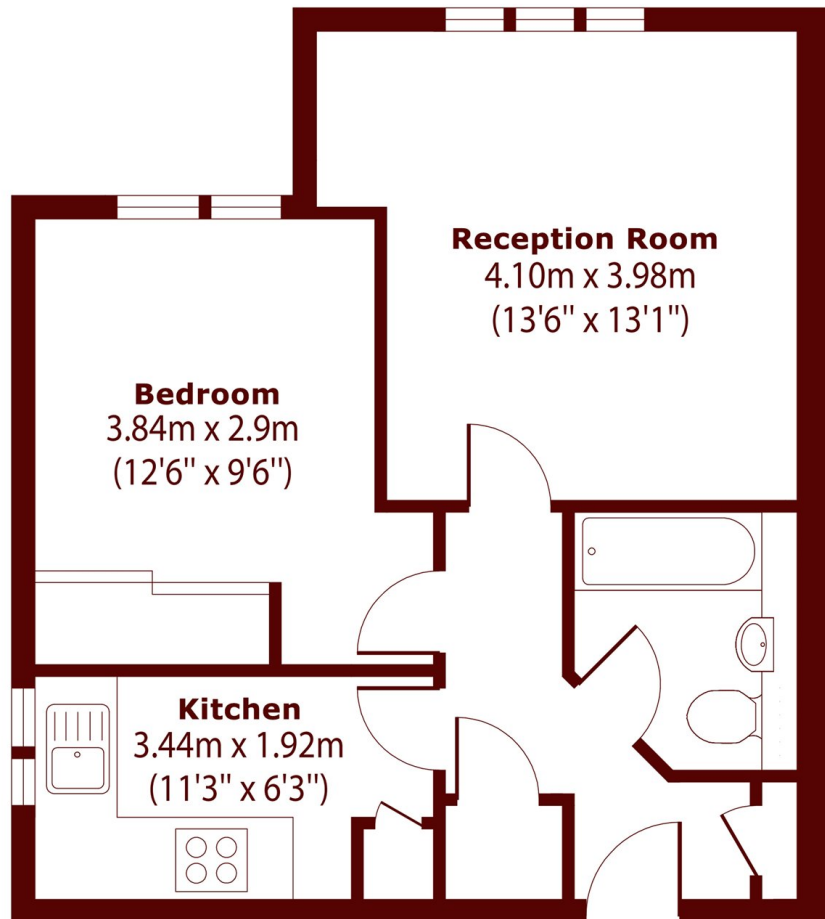


## Willesden Lane, NW2

£1,600 pcm



- One bedroom Flat
- Modern
- Off Street Parking
- Wooden Flooring Throughout
- Communal Garden
- Close to Transport



Total area (approx.): 44.2 sq. m(476.0 sq. ft)

**Marsh & Parsons Queens Park**

56 Salisbury Road, London,  
NW6 6NN  
020 7624 4513