



Yates Court, NW2

£2,700 pcm



- Great location
- Balcony
- Great accommodation





ABOUT THE PROPERTY

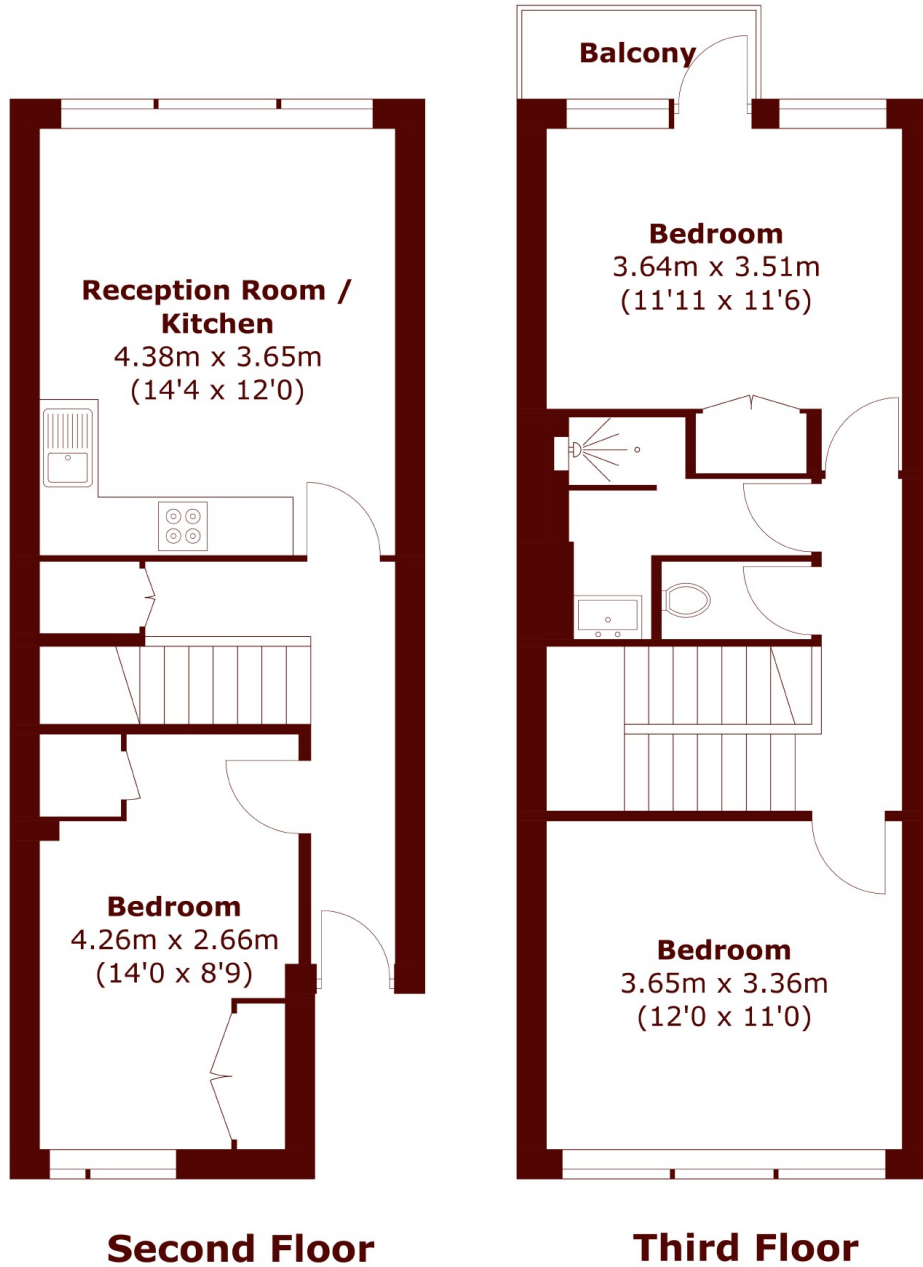
This brand newly refurbished split-level three bedroom, two bathroom apartment is split across two floors in this well maintained purpose-built block and is in fantastic condition throughout.

On the first floor the apartment offers the first of the three double bedrooms with lots of storage, a large open plan well-equipped kitchen and living room.

The second floor comprises the two double bedrooms with one having its own private balcony, as well as a large bathroom and a second wc.

The flat also offers access to communal gardens , off street parking (you still need a permit). Yates Court is a secure block situated moments from Willesden green with great access into central London via the Jubilee line and bus links into the city just outside your door.





Total area (approx.): 74.5 sq. m (801.9 sq. ft)
Balcony: 2.2 sq. m (23.7 sq. ft)

Marsh & Parsons Willesden Green

291-293 Willesden Lane,
London, NW2 5HY
020 8451 0420