

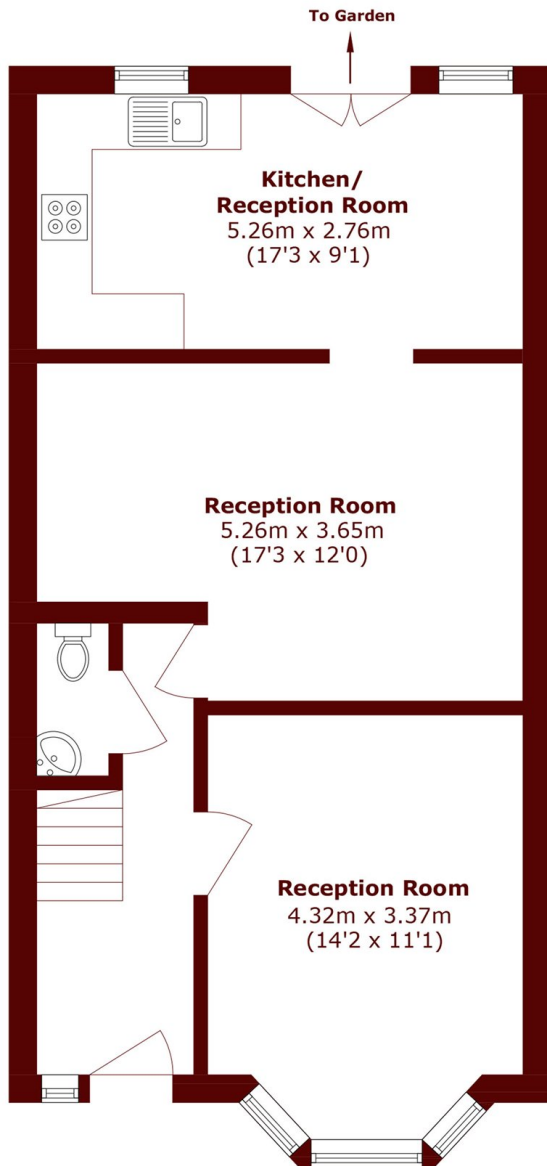


Lancaster Road, NW10

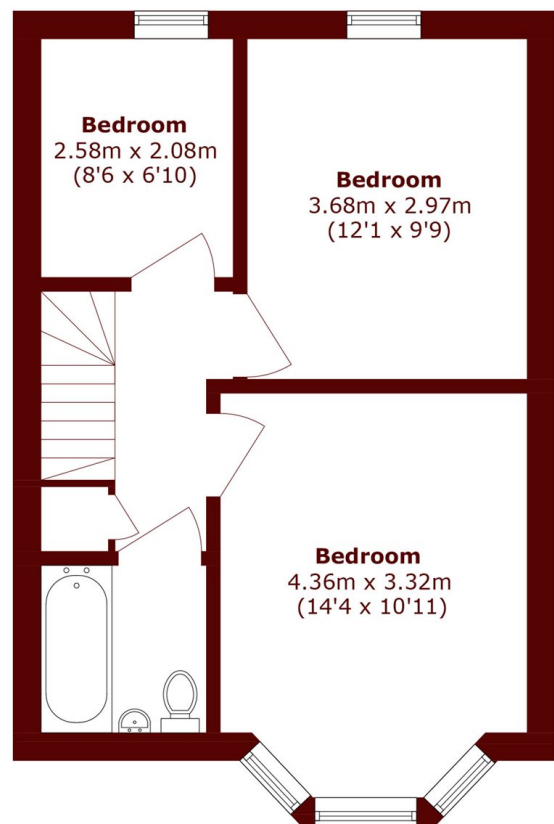
£2,850 per week



- Three / Four Bedroom House
- Double Reception
- Close to Gladstone Park
- 2 Bathroom
- Private Garden
- Easy Access To Tube Station



Ground Floor



First Floor

Total area (approx.): 97.8 sq. m (1052.7 sq. ft)

Marsh & Parsons Willesden Green

291-293 Willesden Lane,
London, NW2 5HY
020 8451 0420