

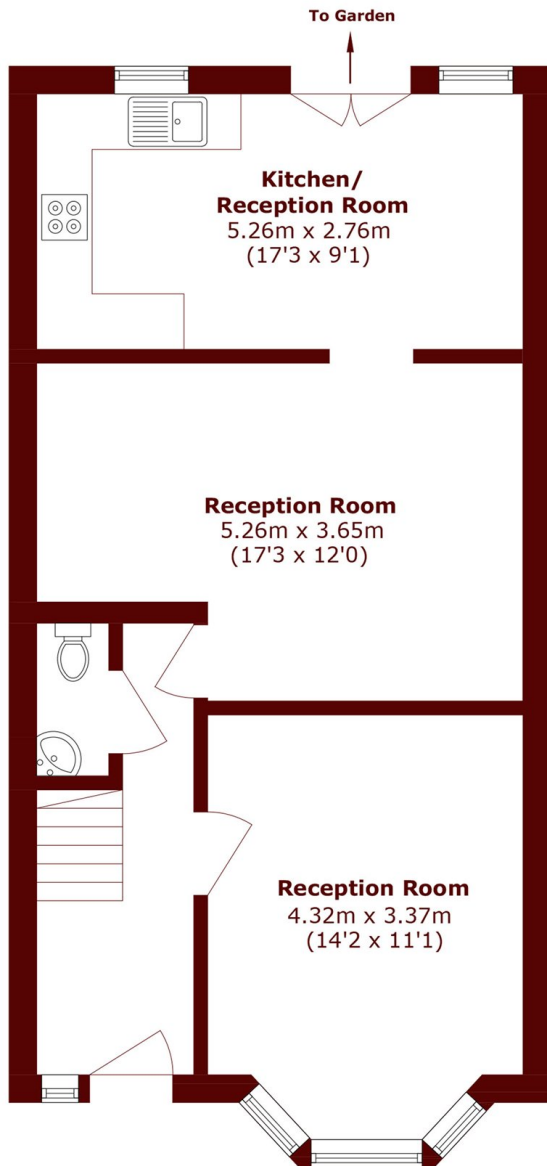


Lancaster Road, NW10

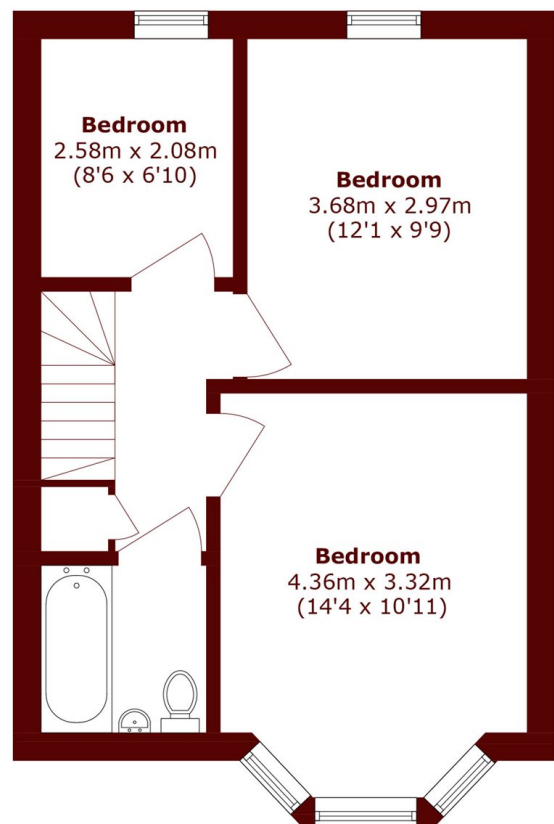
£3,500 pcm



- Three / Four Bedroom House
- Double Reception
- Close to Gladstone Park
- 2 Bathroom
- Private Garden
- Easy Access To Tube Station



Ground Floor



First Floor

Total area (approx.): 97.8 sq. m (1052.7 sq. ft)

Marsh & Parsons Queens Park

56 Salusbury Road, London,
NW6 6NN
020 7624 4513