

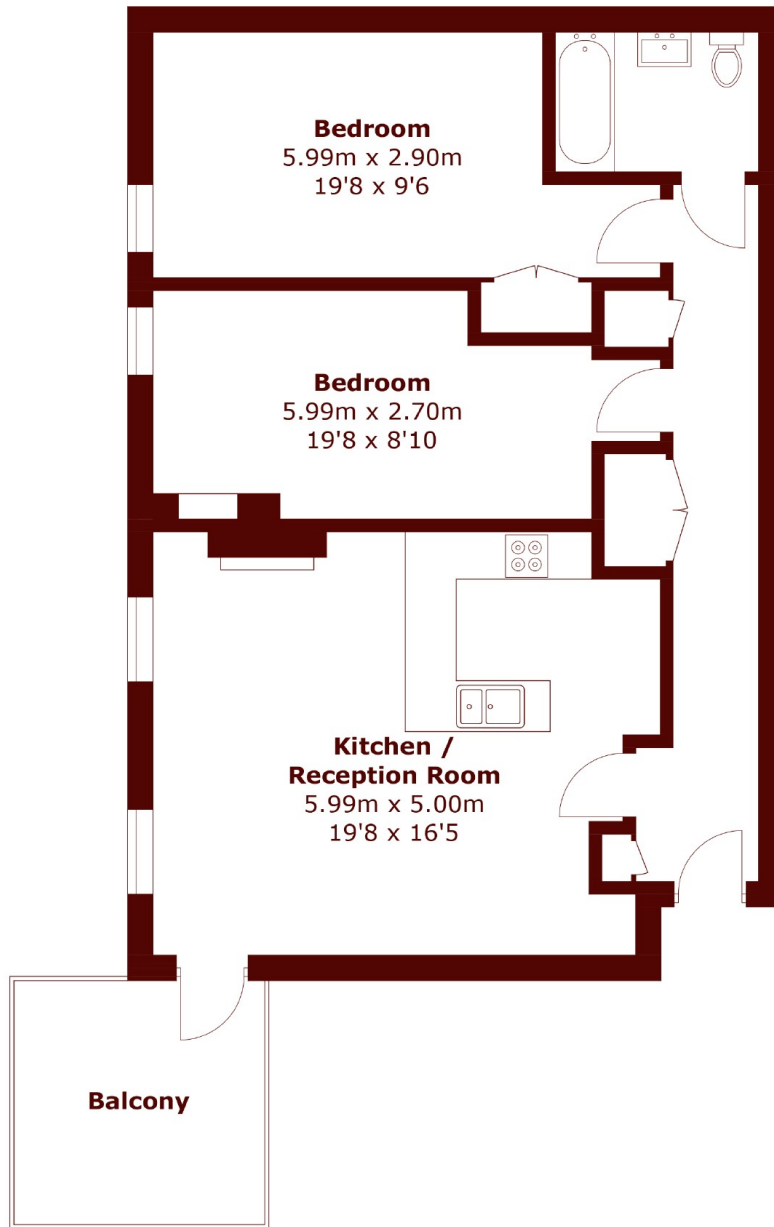


Donnington Road, NW10

£553 per week

🛏️ 2 🛁 1 🛋️ 1 📺 C

- Two double bedrooms
- Open plan kitchen/reception
- Private balcony
- Underground parking
- Modern development
- Concierge



Total area (approx.): 76.9 sq. m (827.7 sq. ft)
Balcony area : 8.5 sq. m (91.5 sq. ft)

Marsh & Parsons Willesden Green

291-293 Willesden Lane,
London, NW2 5HY
020 8451 0420

We aim to make our particulars both accurate and reliable. However, they are not guaranteed; nor do they form part of an offer or contract. If you require clarification on any points then please contact us, especially if you're traveling some distance to view. Please note that appliances and heating systems have not been tested and therefore no warranties can be given as to their good working order.