

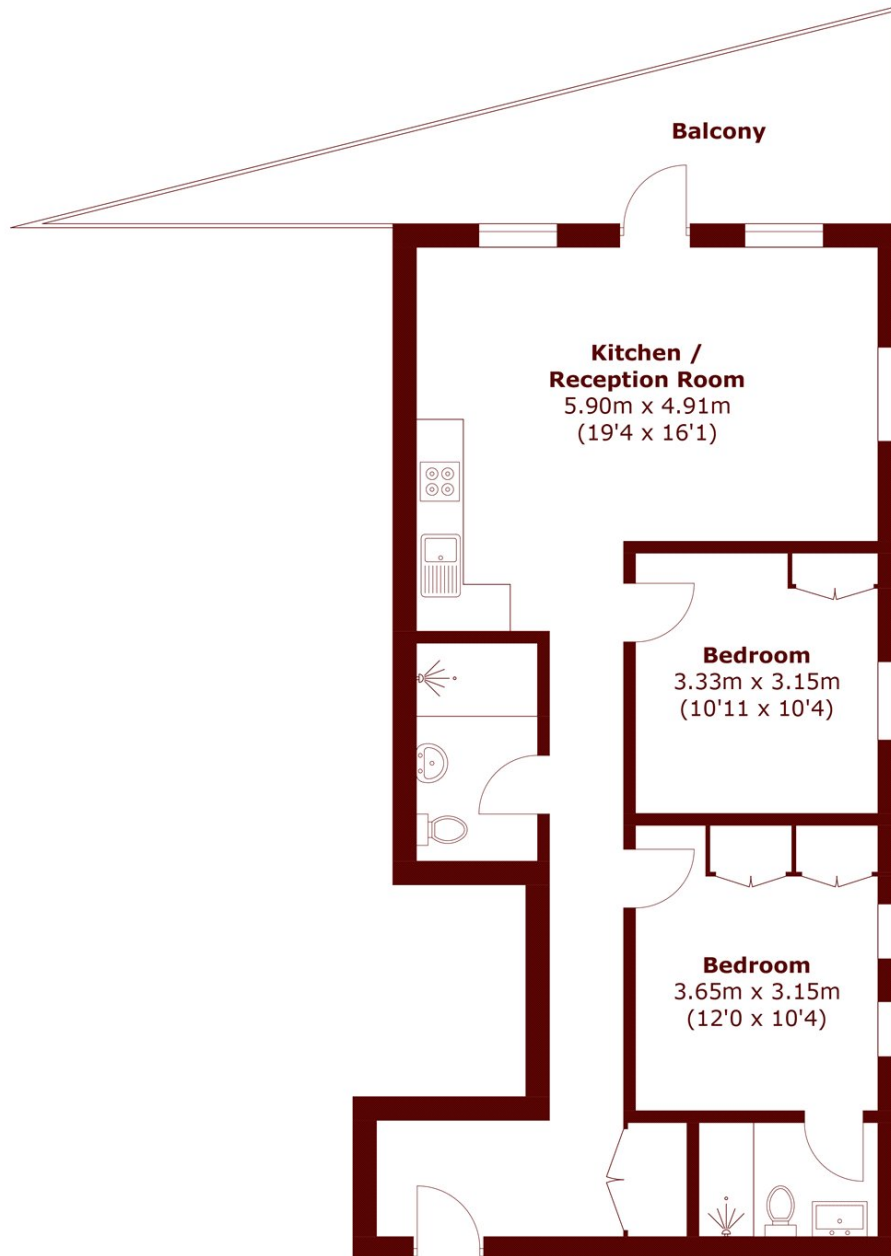


Oberman Road, NW10

£500,000



- Two bedrooms, two bathrooms
- Large, private terrace
- Underground allocated parking
- Concierge, swimming pool and
- Secure, gated development
- High quality finish



Total area (approx.): 70.0 sq. m (753.5 sq. ft)
Balcony : 14.9 sq. m (160.4 sq. ft)

Marsh & Parsons Willesden Green

291-293 Willesden Lane,
London, NW2 5HY
020 8451 0420