



Press Road, NW10

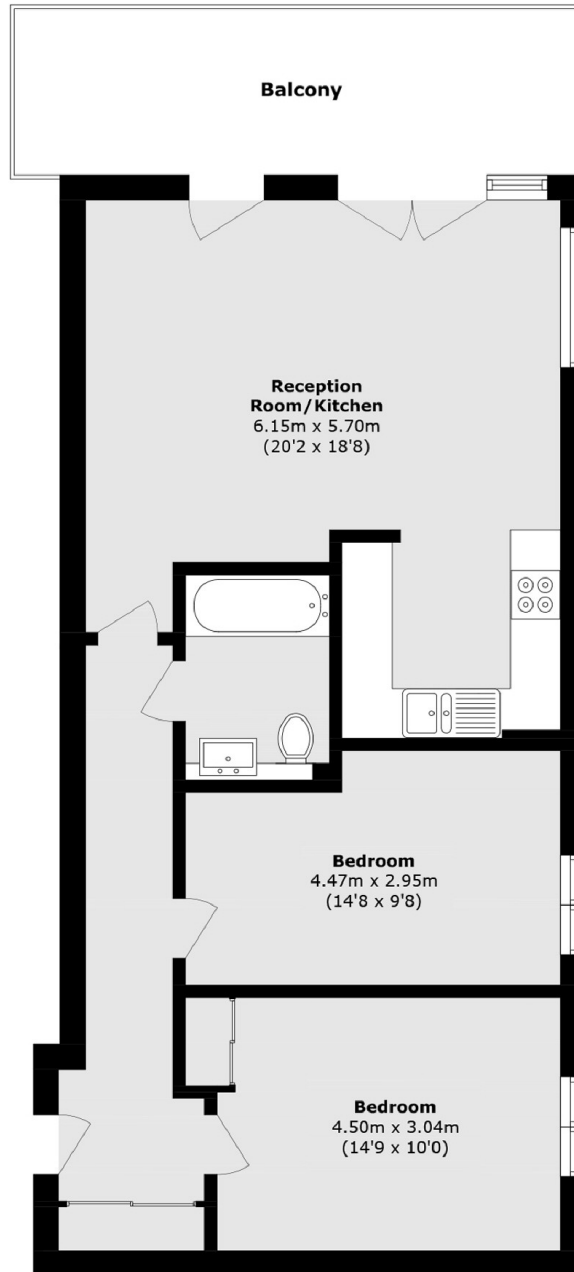
£425,000



- Two bedrooms
- Private balcony

- Sixth-floor apartment
- Underground parking

- Great views
- Modern finish



Total area (approx.): 72.5 sq. m (780.3 sq. ft)
Balcony area (approx.): 12.8 sq. m (137.7 sq. ft)

Marsh & Parsons Willesden Green

291-293 Willesden Lane,
London, NW2 5HY
020 8451 0420