

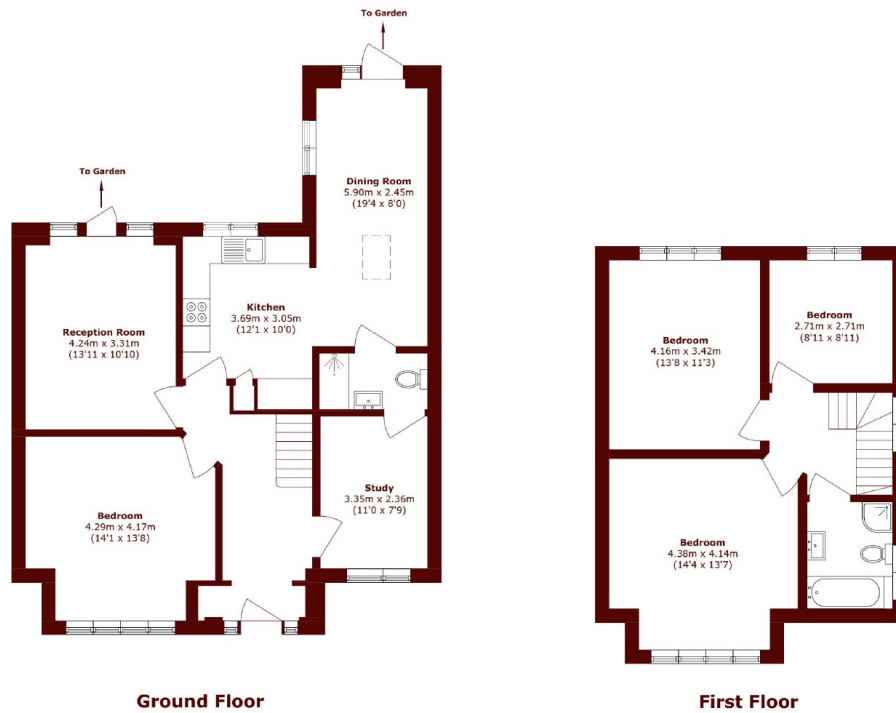


Gladstone Park Gardens, NW2

£995,000



- Four bedrooms, two bathrooms
- Off-street parking
- Semi-detached
- Arranged over 1,396sqft
- Great condition
- Further potential to extend STPP



Total area (approx.): 129.7 sq. m (1396.0 sq. ft)

Marsh & Parsons Willesden Green

291-293 Willesden Lane,
London, NW2 5HY
020 8451 0420