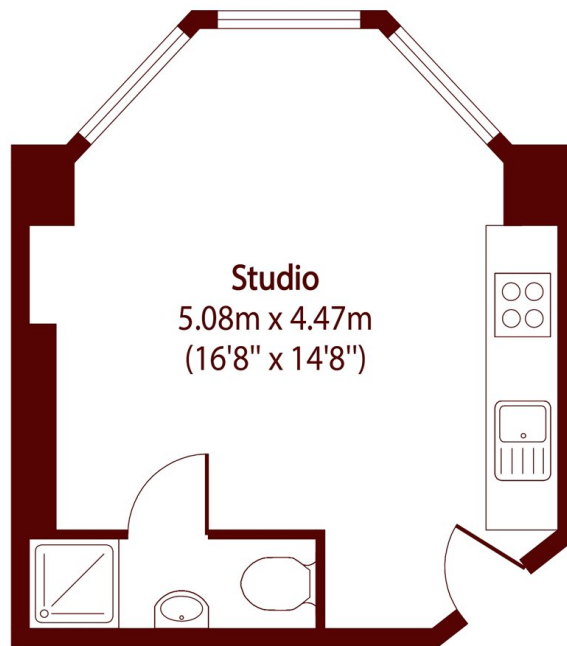


Fordwych Road, NW2

£190,000

 0  1  1  E

- Studio apartment
- High ceilings
- Bay fronted
- Quiet, residential street
- Great investment
- Potential to modernise



Total area (approx): 19.88 sq m (214 sq. ft)

Marsh & Parsons Willesden Green

291-293 Willesden Lane,
London, NW2 5HY
020 8451 0420