



Prospecthill Grove, Mount Florida, G42 9LD

Shanta Residential are delighted to present to the market, this impressive three bedroom, ground floor apartment in the hugely popular Mount Florida area of Glasgow. Set within the beautifully converted former Langside College building, this superb three bedroom ground floor split-level apartment enjoys a prime position in the heart of Mount Florida—one of Glasgow's most sought-after Southside neighbourhoods. With private residents' parking, secure entry, and attractive communal garden grounds, this home offers a perfect mix of character, convenience, and contemporary living. Entering the building into a well-kept close via secured entry the property is presented beautifully throughout. The internal accommodation is bright and well-proportioned throughout, beginning with a welcoming entrance hallway featuring a handy storage cupboard. The stunning open plan living and dining space is bright and spacious with dual aspect windows and beautiful features making this a fantastic space to relax and socialise. The modern kitchen is well laid out with wall and floor units providing great storage and prep space, integrated appliances and a handy space for breakfasting. The three double bedrooms all spacious and decorated beautifully with the master suite also benefitting from an ensuite shower room and walk-in wardrobe area giving it a luxurious feel. The contemporary family bathroom is beautifully finished with 3 piece suite and crisp tiling. There is a further handy storage cupboard found in the hall. Outside, the property benefits from off street parking, a bike store with secure entry and a communal courtyard. Prospecthill Grove is ideally situated for enjoying everything Mount Florida has to offer, from vibrant coffee shops and restaurants to popular bars and local amenities. Nearby Queen's Park offers open green space. With excellent public transport links—including nearby Mount Florida Station—and easy access to major motorway routes, commuting to Glasgow City Centre and beyond is effortless. For council tax purposes, this property falls into band F.

- **Luxury Apartment**

- **Three Bedrooms**

- **Allocated Parking Space**

- **Gas Central Heating**

- **Double Glazing**

- **Shared Garden Space**

- **Excellent Location**

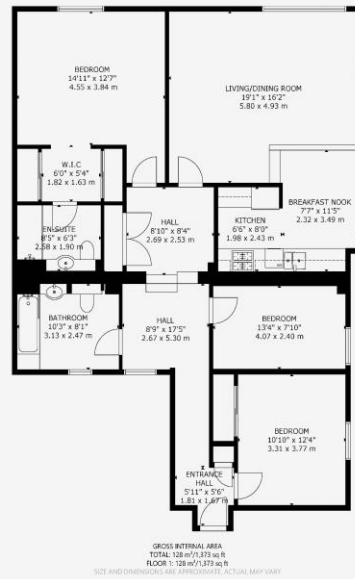
- **Great Transport Links**



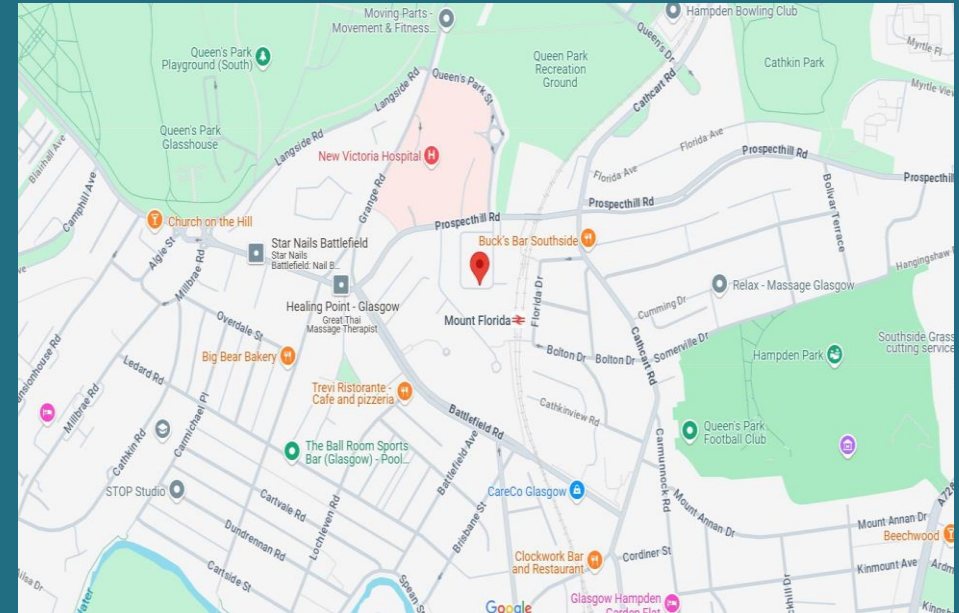
Offers Over £280,000



Floorplan



Map



DISCLAIMER: Whilst we try really hard to make our sales details accurate and reliable they should not be relied on as statements or representations of fact. They do not constitute part of an offer or contract. All measurements etc are approximations. The Seller does not make or give nor do we or our employees have authority to make or give any representation or warranty in relation to the property.