



**Shanta
Residential**
11 Muirend Road
Glasgow
G44 3QR
0141 255 2828

Stanmore Road, Glasgow G42 9AP

Shanta Residential is delighted to present to the market this gorgeous three bedroom flat in the popular area of Mount Florida, Glasgow. Lovingly decorated by the current owners, this property is presented in walk in condition. Entering the building through a secure entry system into a well-kept close, the property occupies the second floor position. The grand, welcoming hallway has great storage options and gorgeous flooring throughout which adds a luxurious finish to the space. The living room is spacious and bright with lovely bay windows, high ceilings and original cornicing. The dining kitchen has been well laid out, with both wall and floor units offering good storage and preparation areas. The dining space in the kitchen makes this a great room to host and socialise. The property offers two spacious double bedrooms, both featuring neutral decor and lots of floor space. The third bedroom, currently in use as a home office, is a versatile space decorated beautifully. Completing the property is the family bathroom featuring three piece suite, contemporary fittings and crisp tiling. Outside the property benefits from a well kept communal garden. Stanmore Road is situated within walking distance of an impressive number of local amenities and transport links. These include independent shops eateries and local businesses. It is just 5 minutes walk from Mount Florida train station. Hampden Park, often used for concerts as well as major sporting events is just a few minutes away. Mount Florida Primary and Holyrood Secondary School are within walking distance making this a prime position for families. Situated a mere 3 miles from Glasgow City Centre, this property is in a great spot for an easy commute into the city centre. For council tax purposes this property is band B. With its great location, walk in condition, gas central heating and gorgeous features we expect this property to be popular and would advise early viewing.

- **Three Bedrooms**

- **Upper Floor Flat**

- **Gas Central Heating**

- **Excellent Transport Links**

- **Walk In Condition**

- **Secure Door Entry**

- **Nearby Amenities**

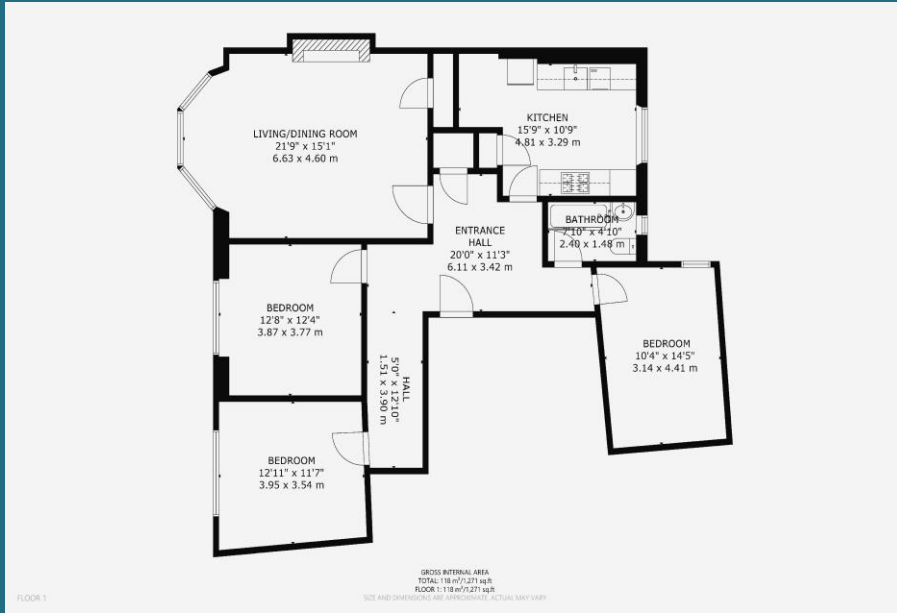
- **Double Glazing**



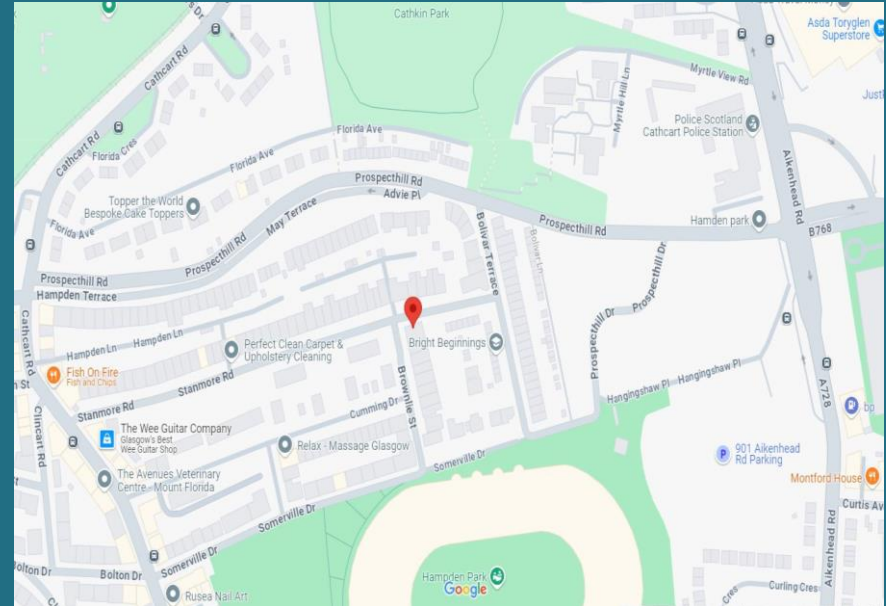
Offers Over £220,000



Floorplan



Map



DISCLAIMER: Whilst we try really hard to make our sales details accurate and reliable they should not be relied on as statements or representations of fact. They do not constitute part of an offer or contract. All measurements etc are approximations. The Seller does not make or give nor do we or our employees have authority to make or give any representation or warranty in relation to the property.