





# Titwood Road, Glasgow G41 2DG

Shanta Residential is delighted to offer to the market this gorgeous, three bedroom, mid terraced house located in the sought after area of Strathbungo, Glasgow. The property is presented in walk in condition and is located withing walking distance of the local schools making this a prime position for families. Entry to the building is gained through the main door, into a bright, spacious hallway which provides access to all main rooms. Flooded with light from its large bay windows, the lounge is beautifully decorated and features a wood burning stove creating a cosy space to relax. The dining kitchen is well laid out with both wall and floor units offering good storage and preparation space and a fantastic dining area. The dining area is spacious and bright and extends into a secondary sitting area, maximising the space. From here you will find access to the low maintenance garden which is a wonderful size and will make an excellent family friendly space to socialize in the summer sunshine. Off the hallway you will find a guest toilet and great under stair storage. Upstairs, the property offers two spacious double bedrooms, both featuring neutral decor and large windows. The third bedroom is a good size, perfect for use as a third bedroom or home working space. The family bathroom completes the property with its three piece suite, contemporary fittings and crisp tiling. The property enjoys a central position within Strathbungo and sits only minutes walk from excellent amenities including a wide variety of shops, cafes, bars and the beautiful Queens Park. Supermarkets, train stations and excellent public transport services are also close at hand. In addition to this, there are excellent road links close by giving access to Glasgow City Centre and the Central Belt motorway network. With its double glazing, gas central heating, private double driveway and great location we expect it to be popular and so would advise early viewing to avoid disappointment. For council tax purposes this property is band E.

- **Three Bedrooms**

- **Mid Terraced House**

- **Excellent Location**

- **Gas Central Heating**

- **Great Transport Links**

- **Nearby Amenities**

- **Private Driveway**

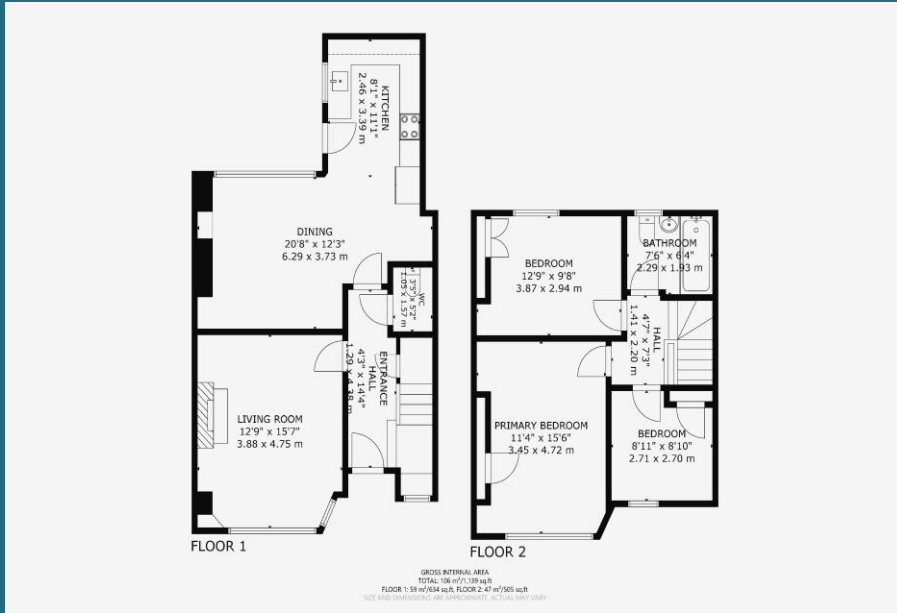
- **Double Glazing**



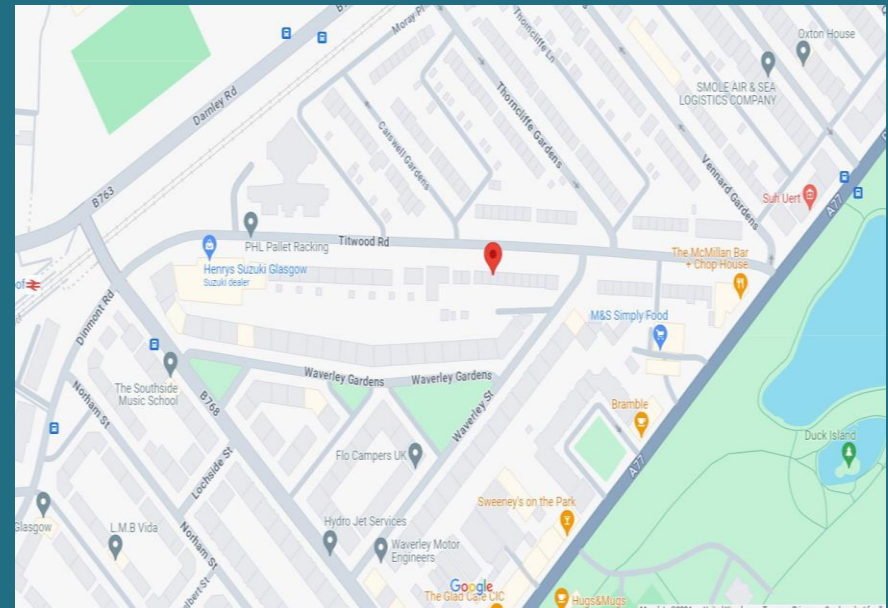
Offers Over £395,000



# Floorplan



# Map



DISCLAIMER: Whilst we try really hard to make our sales details accurate and reliable they should not be relied on as statements or representations of fact. They do not constitute part of an offer or contract. All measurements etc are approximations. The Seller does not make or give nor do we or our employees have authority to make or give any representation or warranty in relation to the property.