



Farebrother

The Houses, 16-18
Blackfriars Lane, London,
EC4V 6EB

OFFICE TO RENT
1,224 SQ FT

farebrother.com
020 7405 4545

EXPERIENCED TRUSTED REAL ESTATE ADVISORS

DESCRIPTION

Newly Redecorated, Historic Office To Let on Flexible Lease Terms

On behalf of The Worshipful Society of Apothecaries, we are delighted to be marketing the 3rd Floor of The Houses, a very attractive period building offering a split-level office on flexible lease terms.

The property overlooks a stunning Courtyard to the rear and the Grade I listed Apothecaries Hall. The building enjoys additional facilities upon request, including luxury conference and event space, and is situated in a vibrant neighbourhood with an array of bars, restaurants and pubs a short walk away.





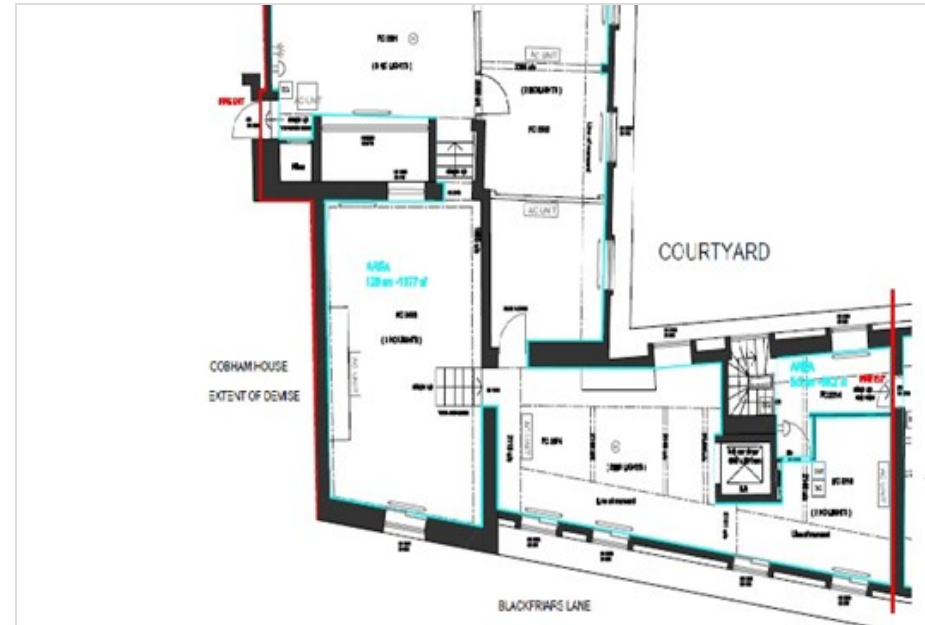
The Houses, 16-18 Blackfriars Lane, London, EC4V 6EB

ACCOMMODATION

FLOOR	AREA (SQ FT)	AVAILABILITY	DESK SUITABILITY NO
3rd Floor	1,224	December 2023	11 - 18
Total	1,224		

AMENITIES

Split level open plan office	Flexible lease terms
Good natural light	Centrally heated
Grade I Listed	Bespoke fitout available
24 hour access	Lift access
Perimeter trunking	Redecorated



FURTHER INFORMATION

Rent

£40.00 psf

Service Charge

£10.97 psf

Rates

£16.13 psf

Alistair Subba Row

Farebrother

07973 841691

asubbarow@farebrother.com

Harvey Widdowson

Farebrother

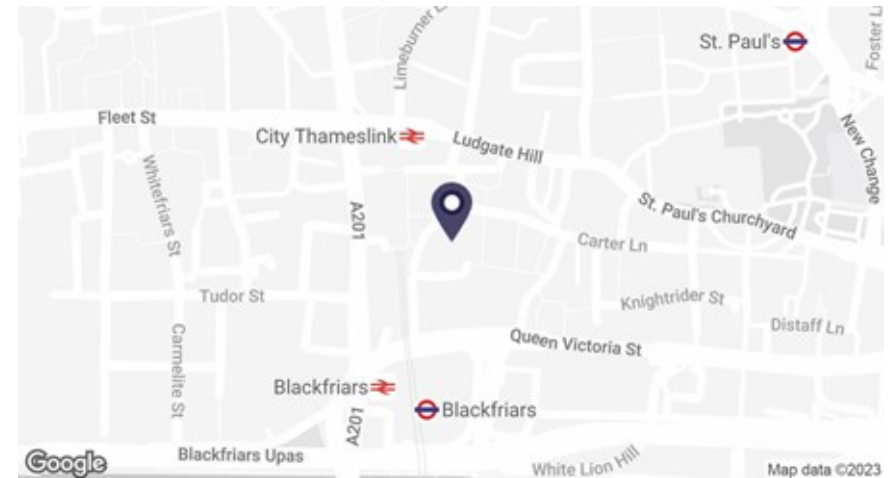
07732 649308

hwiddowson@farebrother.com

Subject to contract. Farebrother for themselves and the vendor of this property give notice that these particulars do not form, or form part of, any offer or contract. They are intended to give fair description of the property and whilst every effort has been made to ensure their accuracy this cannot be guaranteed. Any intending purchaser must therefore satisfy themselves by inspection or otherwise. Neither Farebrother nor any of its employees, has any authority to make or give any further representations or warranty whatsoever in relation to this property. All prices and rents quoted are net of vat. July 2024

LOCATION

Connections to the property are enviable with Blackfriars Station at your doorstep, offering access to Circle and District Underground, and Thameslink services. City Thameslink and St Paul's tube station (Central Line) are also a short walking distance, providing excellent access to City, West End and South Bank locations. The new Elizabeth Line is a short walk away at Farringdon Station enabling occupiers the ability to travel across London in a matter of minutes.



Farebrother

EXPERIENCED TRUSTED REAL ESTATE ADVISORS