

# PLOT 2 DEPTFORD LANDINGS

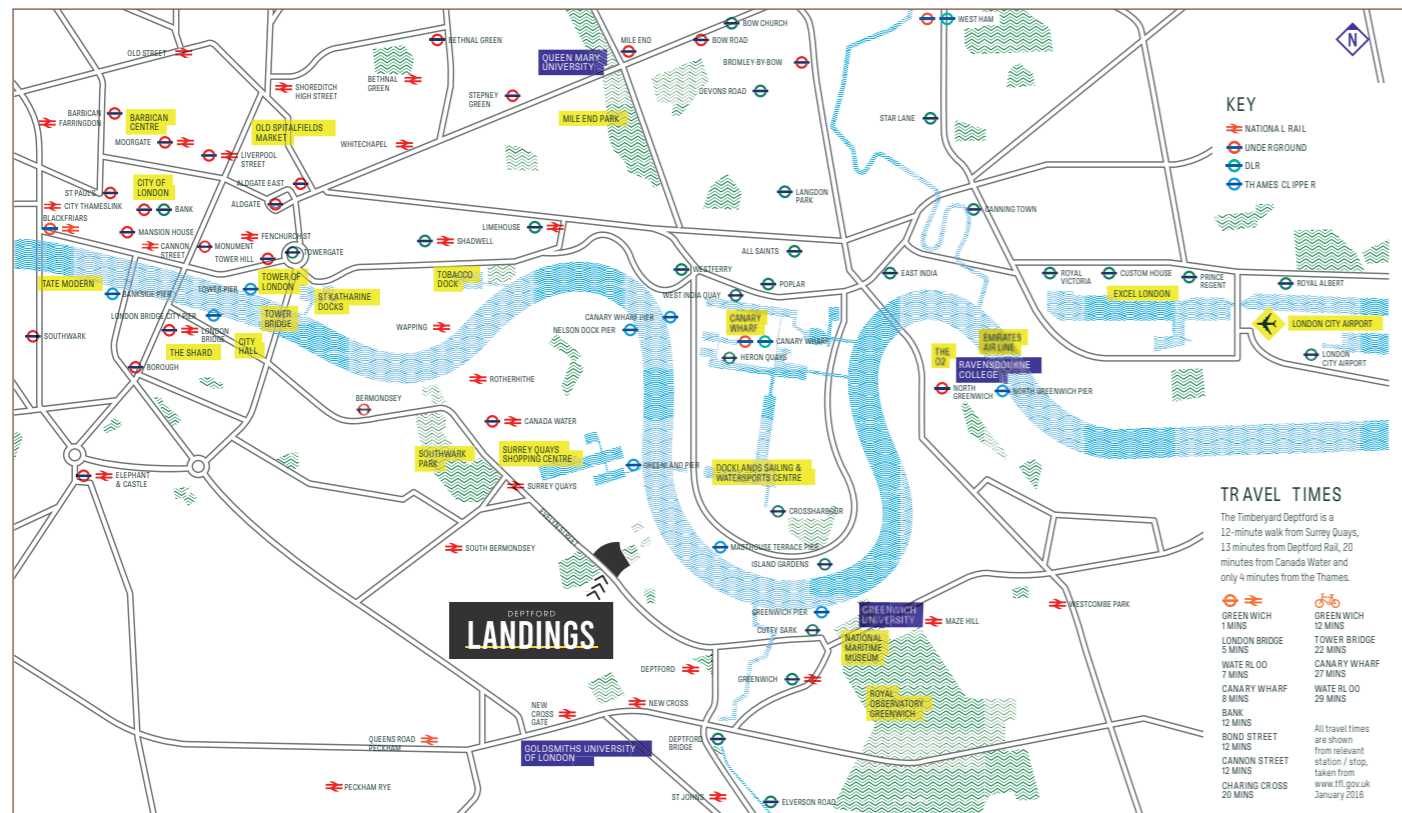
27 Waterline Way SE8  
Flexible Commercial Unit



1,661 SQ FT UNIT  
FOR SALE/TO LET

DEPTFORD  
**LANDINGS**

# LOCATION



Deptford Landings is one of Lendlease's most exciting new regeneration projects. Working closely with the local community, we have designed a place for people to live, work and visit, which will build on Deptford's already flourishing neighbourhood. Moments from the River Thames, close to fantastic transport connections and uniquely positioned between the open green spaces of Deptford Park and Pepys Park, Deptford Landings combines the best of both worlds.

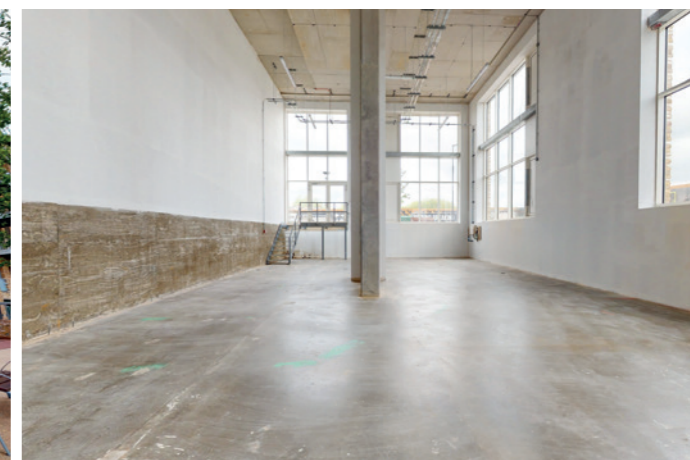
Made up of six exciting neighbourhoods designed to blend into the surrounding area, Deptford Landings offers plenty of green space and tranquil private gardens in each. With a wealth of vibrant shops and safe play areas to choose from, there's something for everyone to enjoy.



# OPPORTUNITY

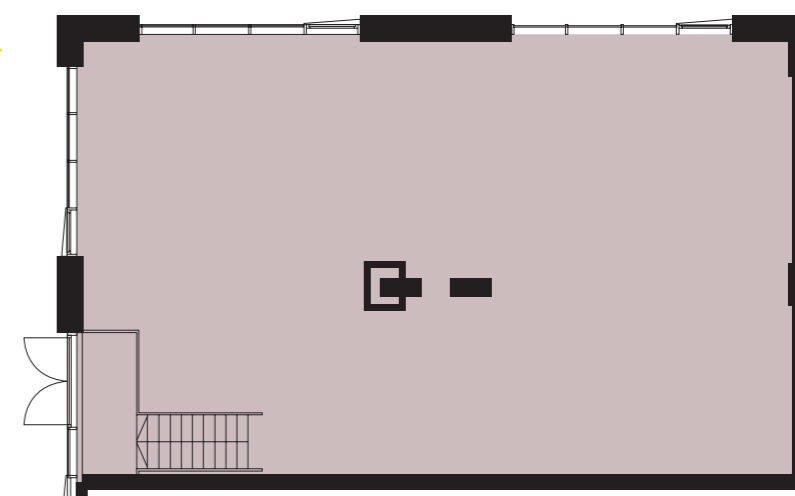
Located in Zone 2 London, this spacious commercial unit is centrally based in Deptford and ready for immediate occupation.

Ideally located between a large new residential complex and existing residential, the area is filled with energy and potential.



# FLOOR PLAN

Deptford Landings Plot 2  
B1 Commercial Space  
1,661 sq ft





# CONNECTIVITY

Deptford Landings has fast and frequent National Rail, Overground and Underground services from several nearby stations, putting it within easy reach of all of what London has to offer.

Don't want to use the trains/tubes? No problem, you can hop on your bike and follow one of the many cycle routes to Greenwich, one of just four Royal Boroughs filled with historic sights to explore.

Alternatively, If you'd rather stay local, Deptford High Street and the weekend market offer all the amenities and convenience you could want and are just a short stroll away.

# TRAVEL TIMES

## WALKING DISTANCE (MINUTES)



## TRAIN AND TUBE DISTANCE (MINUTES)



## CYCLE DISTANCE (MINUTES)



## AIRPORT DISTANCE (MINUTES)



Source: Google Maps. All times are approximate

For further information contact:

**Vincent Cheung**

T: 020 3757 8571

E: [vc@unionstreetpartners.co.uk](mailto:vc@unionstreetpartners.co.uk)

**Neil Davies**

T: 020 3757 7777

E: [nd@unionstreetpartners.co.uk](mailto:nd@unionstreetpartners.co.uk)

