

NEWHAMS YARD
151-153 TOWER
BRIDGE ROAD
LONDON SE1

7 x New Flexible Commercial Units
703 - 18,187 sq ft (65.3 - 1,690 sq m)

OVER 60% LET

AVAILABLE FOR IMMEDIATE OCCUPATION





FLEXIBLE USE

Variety of commercial uses considered*



Restaurant, cafes



Offices



Gym



Grocery Store



Shops



Clinics

NEW COMMERCIAL UNITS FOR SALE/TO LET

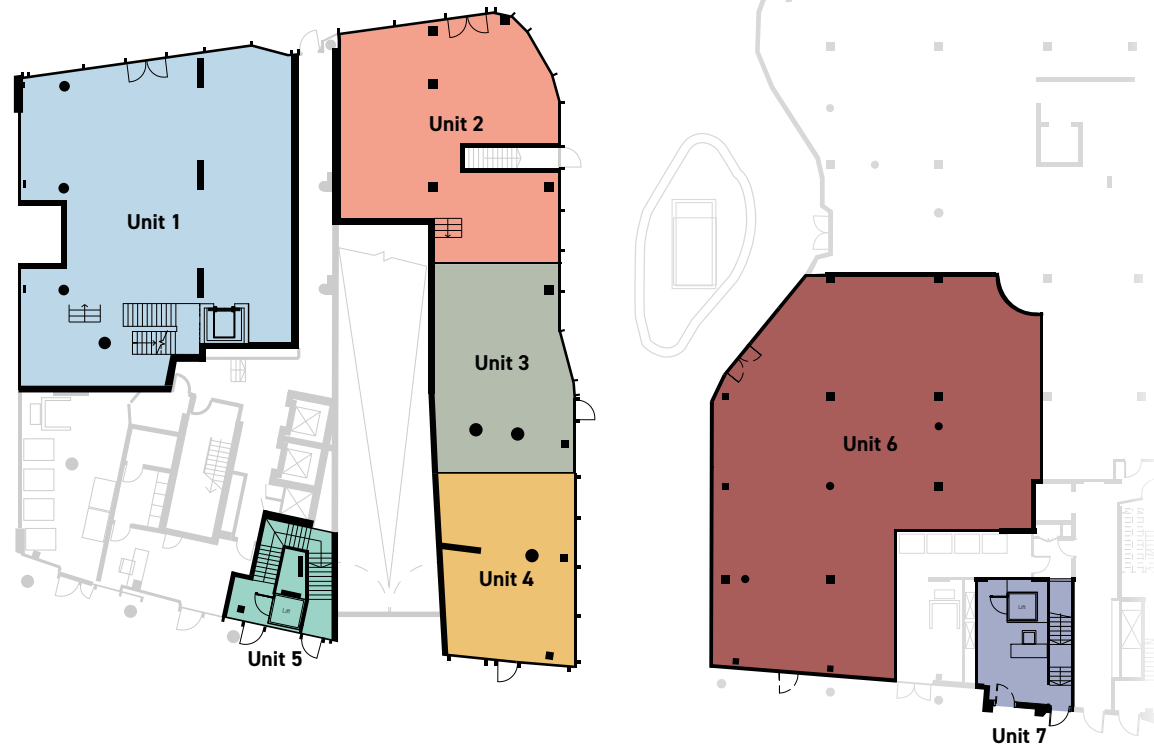
The commercial units available measure 18,187 sq ft in total. All units allow for office, shop and restaurant use with the exception of unit 7 which has the benefit of 'recreation & fitness' use.

Divided into 7 separate units which comprise basement, ground and first floor levels, Unit 5 will be fitted to CAT A standard ready for occupier CAT B fit out. All other units are available in shell and core condition and can be combined to provide a larger unit. The landlord will consider a further fitout by separate arrangement.

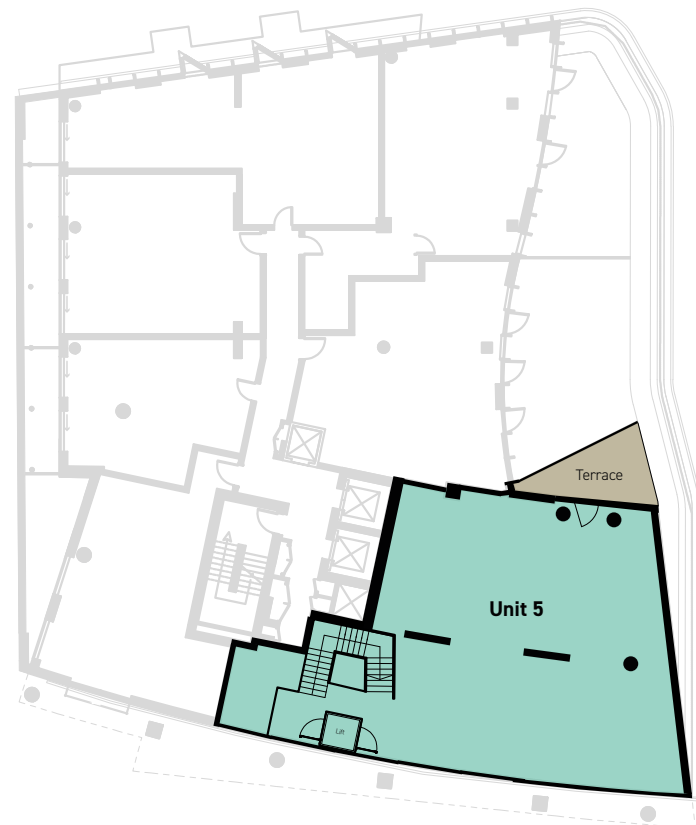
BASEMENT



GROUND FLOOR



FIRST FLOOR



AVAILABILITY

Unit	Floor	sq ft	sq m	Uses	
● Unit 1	Ground	2,430	225.8	<ul style="list-style-type: none"> - Retail - Restaurant - Professional services - Office 	
	Basement	1,938	180		
● Unit 2	Ground	1,290	119.8		
● Unit 3	Ground	806	74.9		
● Unit 4	Ground	703	65.3		
● Unit 5	Ground	51	4.7		Let to Manyone Limited
	First	2,024	188		
● Unit 6	Ground	3,294	306	Let to PLANET ORGANIC	
● Unit 7	Ground	269	25	Let to Rathbone Boxing Gym	
	Basement	5,382	500		
Total		18,187	1,690		

● ● ● ● ● 151 Tower Bridge Road ● ● 153 Tower Bridge Road

*Other uses will be considered by the landlord subject to planning permission

NEWHAMS YARD, 151-153 TOWER
BRIDGE ROAD, LONDON, SE1

FLEXIBLE COMMERCIAL UNITS WITH DIRECT ACCESS TO BERMONDSEY STREET



TRAVEL TIMES



London Bridge
12 minutes



Shard
13 minutes



Borough Market
15 minutes



Tower Bridge
9 minutes



Bermondsey Street
1 minute



Maltby Street Market
4 minutes



City
20 minutes

ACCESS POINTS

1. Bermondsey Street
2. Tower Bridge Road
3. St Mary Magdalen Church Yard
4. Tanner Street Park

NEWHAMS YARD, 151-153 TOWER
BRIDGE ROAD, LONDON, SE1

**151-153
TOWER BRIDGE
ROAD SE1**

THE SHARD

THE CITY

BLACKFRIARS STATION

TOWER BRIDGE

CITY HALL

LONDON BRIDGE STATION



NEWHAMS YARD, 151-153 TOWER
BRIDGE ROAD, LONDON, SE1

UNIT LET



CGI IMAGE OF UNIT 5

NEWHAMS YARD, 151-153 TOWER
BRIDGE ROAD, LONDON, SE1

BERMONDSEY STREET HAS BECOME A WELL ESTABLISHED LOCATION FOR CREATIVE BUSINESSES, BENEFITTING FROM A WIDE VARIETY OF EXCELLENT BARS, RESTAURANTS AND COFFEE SHOPS.

This property is part of the Newhams Yard Development. It is located on Tower Bridge Road linking directly through to Bermondsey Street via Newhams Row.

Bermondsey Street has become a destination for creative businesses, independent coffee shops, bakeries, vibrant bars and excellent eateries including three restaurants from two TV favourites: Jose Pizarro and Angela Hartnett (Jose & Pizarro and Café Murano). One of the world's leading contemporary art galleries, White Cube, is also located on Bermondsey Street, attracting an eclectic and diverse mix of visitors to the area.

The units are located within a communal courtyard which also provides access into Bermonds Locke Aparthotel. The development has already secured Planet Organic into the scheme, the UK's first fully organic supermarket along with a boutique box fit gym set to launch in Q4 2021.



7 FANTASTIC NEW FLEXIBLE USE COMMERCIAL UNITS NEXT TO:

- 143 Room Aparthotel
- 86 Residential units
- Co-working space
- Coffee shop



CONTACT



KALMARs COMMERCIAL

2 Shad Thames, London SE1 2YU
020 7403 0600

Scott Bebbington
020 7403 0600
scottb@kalmars.com

Adrian Gurney
020 7403 0600
adriang@kalmars.com



UNION STREET PARTNERS

10 Stoney Street, London, SE1 9AD
020 3757 7777

Neil Davies
T: 020 3757 7777
M: 07714 469035
nd@unionstreetpartners.co.uk

Luke Austerberry
T: 020 3757 8579
M: 07921 406291
la@unionstreetpartners.co.uk

Vincent Cheung
T: 020 3757 8571
M: 07736 880310
vc@unionstreetpartners.co.uk

All properties are offered subject to contract and availability. These particulars are believed to be correct at the time of going to print in September 2021, but we cannot accept any liability whatsoever for any misrepresentation made either in these particulars or orally. Intending purchasers or tenants are strongly advised to make their own enquiries to check these particulars to satisfy themselves that the property is suitable for their purchase. They may be subject to VAT.