



THE
RISBOROUGH | SE1

VISION

BUILDING

AREA

CONTACT



WORK YOUR WAY AT THE RISBOROUGH
17-21 Risborough Street, London, SE1 0HG

Feel inspired in this brand new stylish and sustainable workspace, created with people and the planet at the forefront of mind.

Located in the heart of London's famous South Bank, The Risborough offers approx. 14,500 sq ft of flexible office space set across seven floors of between 1,023 - 2,325 sq ft. Fully fitted and furnished floors are ready for immediate occupation with open plan floors allowing bespoke occupier fit out.

The Risborough is all about enhancing everyday lives, inspiring people to feel healthier and happier. Because we believe when you feel great, you do great.



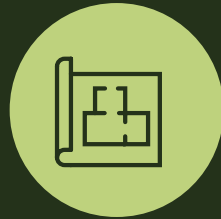
5 MAJOR
TRANSPORT
HUBS NEARBY



PRIVATE ROOF
TERRACE ON
6TH FLOOR



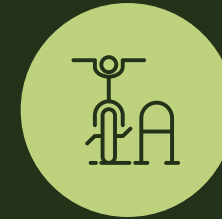
FULLY FITTED
& FURNISHED
FLOORS
AVAILABLE



COLUMN
FREE FLOOR
PLATES



PASSENGER
LIFT



SECURE CYCLE
STORAGE FOR
42 BIKES



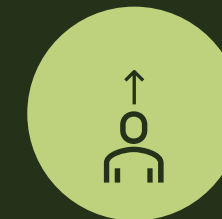
SHOWERS



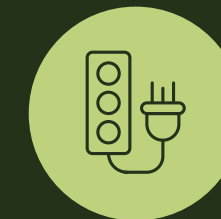
OPENABLE
WINDOWS



AIR
CONDITIONING



OUTSTANDING
FLOOR TO CEILING
HEIGHTS OF 3.2M



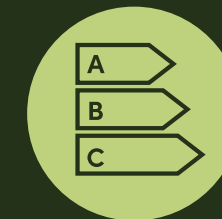
RAISED FLOORS,
PRE-INSTALLED
POWER & DATA



TARGET
BREEAM
'EXCELLENT'



TARGET
WIREDSCORE
PLATINUM



TARGET
EPC
'A RATING'



Sixth floor	1,793 sq ft	166.6 sq m	Cat A
Fifth floor	2,317 sq ft	215.3 sq m	Cat A
Fourth floor	2,323 sq ft	215.8 sq m	Cat A
Third floor	2,323 sq ft	215.8 sq m	Fully fitted
Second floor	2,323 sq ft	215.8 sq m	Fully fitted
First floor	2,312 sq ft	214.8 sq m	Fully fitted
Ground floor	1,019 sq ft	94.7 sq m	Cat A
Total	14,411 sq ft	1,338.8 sq m	

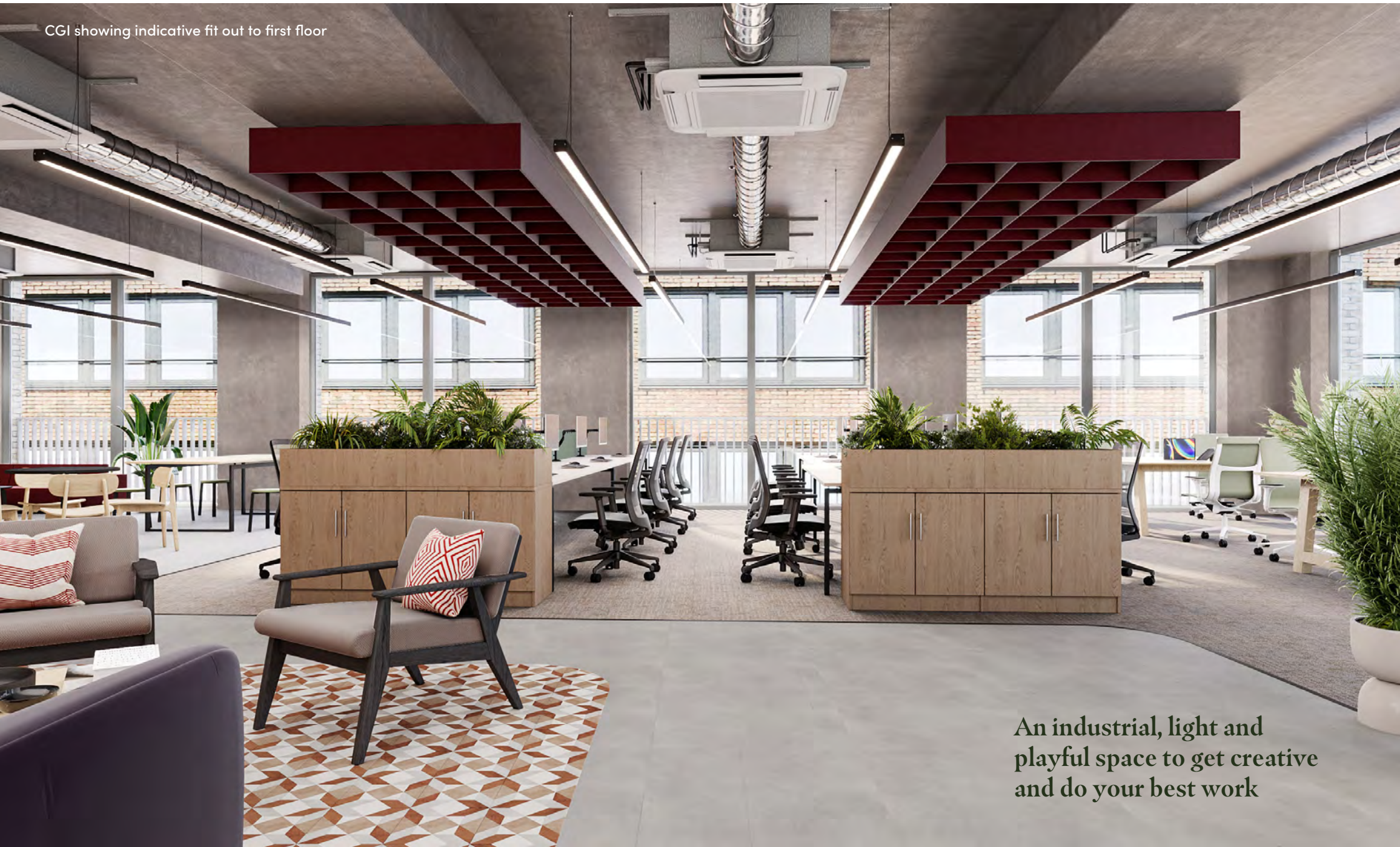
VISION

BUILDING

AREA

CONTACT

CGI showing indicative fit out to first floor



An industrial, light and playful space to get creative and do your best work

VISION

BUILDING

AREA

CONTACT

Simple spaces, designed
to work around you



CGI showing indicative fit out to first floor

VISION

BUILDING

AREA

CONTACT



CGI showing indicative fit out to first floor

G

1,019 sq ft
94.7 sq m

VISION

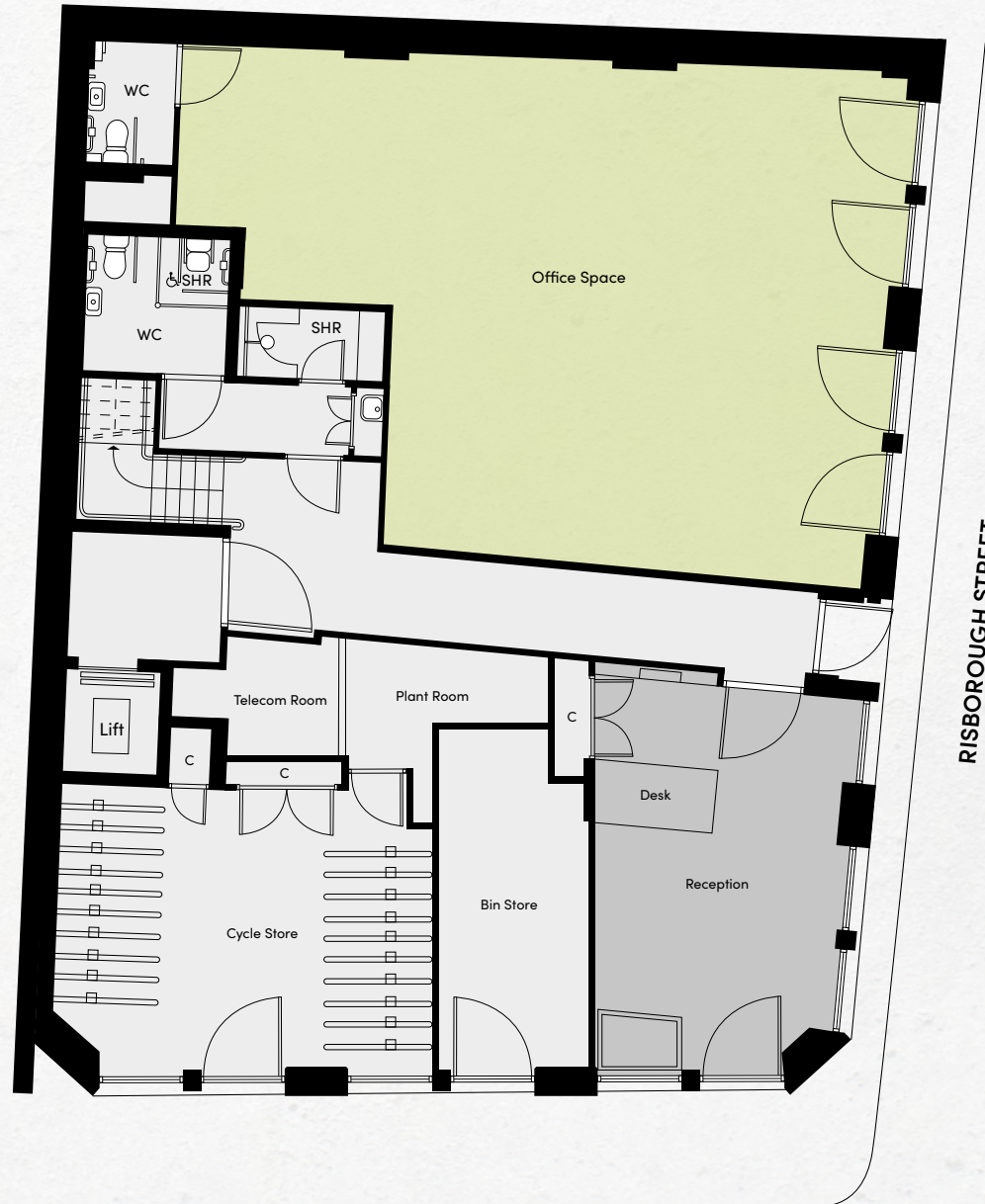
BUILDING

AREA

CONTACT



- OFFICE
- RECEPTION
- CORE



LOMAN STREET

1

2,312 sq ft
214.8 sq m

VISION

BUILDING

AREA

CONTACT

Fully fitted and furnished floor with:

30 Desks

1 X 8 person meeting room

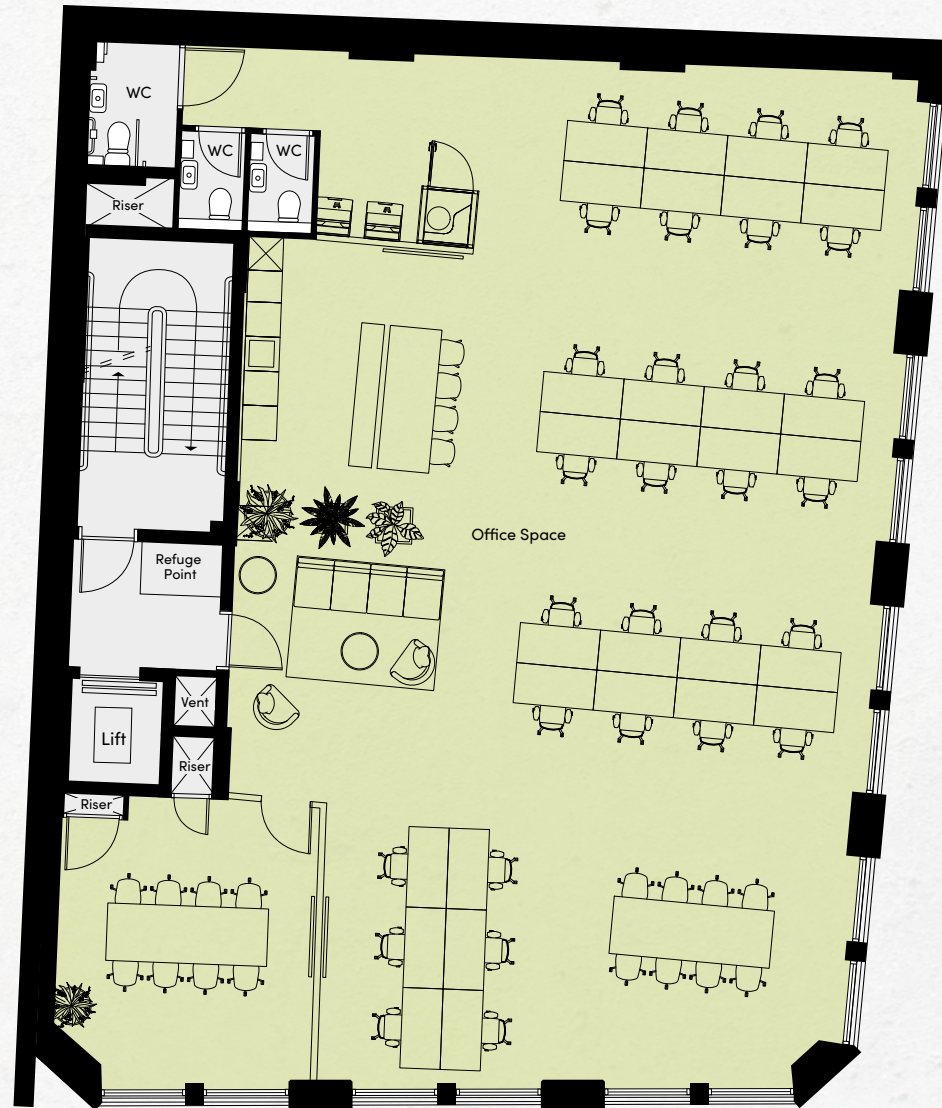
1 X 8 person hot desk area

Reception area

Kitchen/Break-out area

Phone booth

3 Private W/C's



OFFICE

CORE

2-3

2,323 sq ft
215.8 sq m

VISION

BUILDING

AREA

CONTACT

Fully fitted and furnished floors with:

30 Desks

1 X 8 person meeting room

1 X 8 person hot desk area

Reception area

Kitchen/Break-out area

Phone booth

3 Private W/C's



OFFICE

CORE

4

2,323 sq ft
215.8 sq m

VISION

BUILDING

AREA

CONTACT



OFFICE

CORE



5

2,317 sq ft
215.3 sq m

VISION

BUILDING

AREA

CONTACT



- OFFICE
- CORE



6

1,793 sq ft
166.6 sq m
(OFFICE)

323 sq ft
30 sq m
(TERRACE)

VISION

BUILDING

AREA

CONTACT



- OFFICE
- TERRACE
- CORE

TECHNICAL SPECIFICATION

VISION

BUILDING

AREA

CONTACT

FINISHED CEILING HEIGHTS

Excluding down stand beams

Ground floor: 3.26m

Floors 1 to 6: 3.24m

RAISED FLOORS

From structural slab to top of raised access

Floors Ground to 05: 150mm

Floor 6: 200mm

LOADINGS

Ground floor = 5kN/sqm

Upper floors = 3.5kN/sqm

Roof = 5kN/sqm for the M&E area, 0.6kN/sqm for the green roof area and specific loadings provided for the generator

OCCUPATIONAL DENSITIES

Building services: 1:8m² NIA

WCs: 1:7m² NIA

Escape: 1:6m² NIA

VERTICAL TRANSPORTATION

One 8 person passenger lift accessing all floors

HEATING & COOLING

VRF system and fresh air ventilation, typically ceiling mounted fan coil units. Internal design temperature based on 23 C+2 summer and 21 C+2 winter

VENTILATION

Heat Recovery Ventilation Units -
Air flow rate: Up to 400 L/s

Cassette Indoor Units for Offices
& Meeting Room - Air flow rate: 233 L/s
8 l/s per person (NIA)

SMALL POWER

Allowance of 25W/m²

LIGHTING

Linear office lights providing uplighting
and downlighting

Operated via switch or motion sensors

Offices: 400 Lux with 0.8 uniformity on
a typical task plane

Circulation areas, inc. lift lobbies:
100-150 Lux

Reception Areas: 250 Lux, 300 Lux on the
reception desk

Boardroom/Meeting Rooms:
00 Lux (uniformity 0.8)

Comms Room: 300-400 Lux

WCs: 150 Lux

Teapoint/Breakout Space: 250 Lux

Emergency and escape lighting: 0.5 Lux
open plan (anti-panic). 1.0 Lux along the
centre line of permanently unobstructed
escape routes.

Maximum energy use as per BCO
guidelines: 10 W/m²

CYCLE FACILITIES

42 cycle spaces

SUSTAINABILITY

Target BREEAM New Construction "Excellent"

Target EPC A Rating

Target Wired Score Platinum

AMENITY

Paved 6th floor terrace

Wildflower green roof

Openable windows to all floors with
Juliette balconies on floors 1 to 5

TENANT PLANT

Space available for tenant plant at roof
level, subject to availability

VISION

BUILDING

AREA

CONTACT

— AREA —

SOUTHWARK BANKSIDE & BOROUGH

PERFECTLY PLACED FOR GOING PLACES



St Paul's Cathedral



BANK

CITY OF LONDON



ST PAUL'S



CANNON STREET



MONUMENT



LIVERPOOL ST



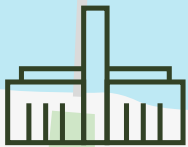
TEMPLE



OXO Tower



BLACKFRIARS



Tate Modern



Globe Theatre



Borough Yards



Borough Market



The Shard



LONDON BRIDGE

SOUTHWARK



SOUTHWARK



Old Union Yard Arches



Flat Iron Square



BOROUGH



Tabard Market



Vinegar Yard



WATERLOO EAST



WATERLOO



Lower Marsh



The Old Vic

VISION

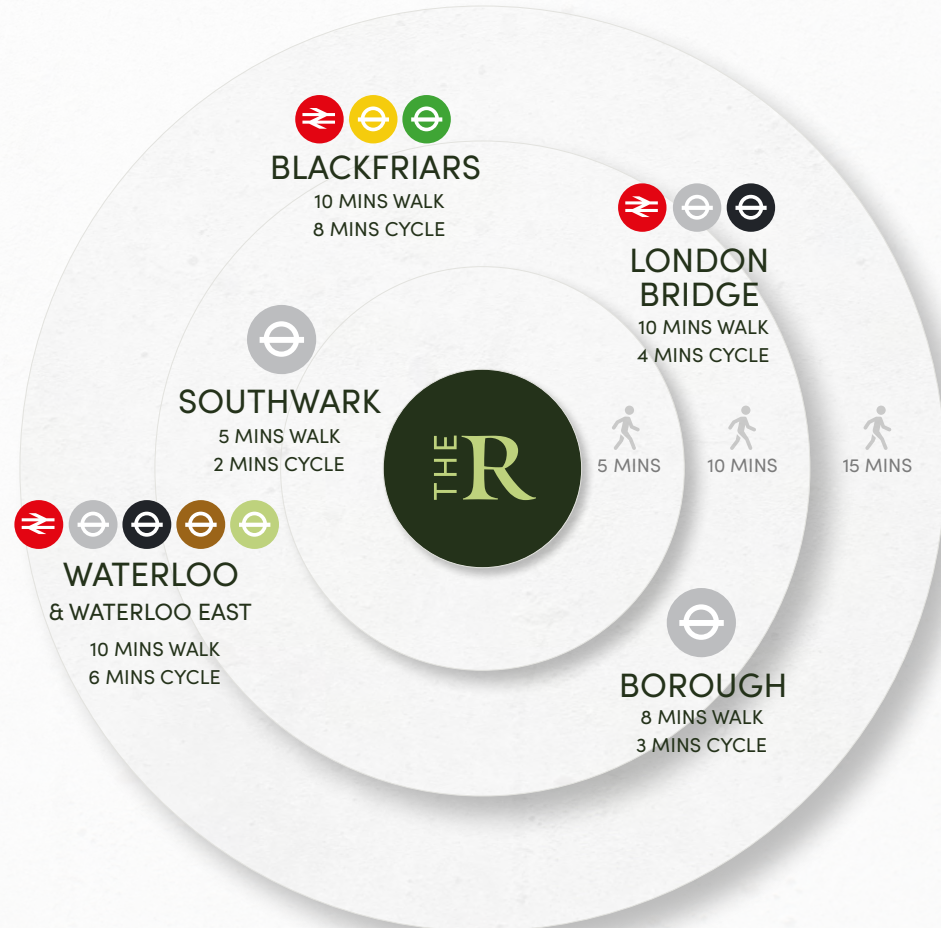
BUILDING

AREA

CONTACT



Getting to and from work has never been easier. With five major transport connections within a sixteen-minute walk, The Risborough is ideally located for travel across London and is easily accessible from the South East and South West.





TRAVEL TIMES FROM LOCAL STATIONS

Southwark

Waterloo
4 mins

London Bridge
10 mins

Bermondsey
12 mins

Canada Water
14 mins

Westminster
15 mins

Canary Wharf
17 mins

Green Park
18 mins

Bond Street
19 mins

North Greenwich
19 mins

Stratford
31 mins



Borough

London Bridge
3 mins

Waterloo
18 mins

Embankment
21 mins

Charing Cross
21 mins

Leicester Square
22 mins

Tottenham Ct Rd
21 mins

Euston
23 mins



London Bridge

Bank
5 mins

Moorgate
5 mins

Monument
6 mins

Liverpool Street
8 mins

Old Street
11 mins

Canary Wharf
15 mins

Angel
12 mins

Kings Cross
17 mins

East Croydon
25 mins

Gatwick Airport
45 mins



London Waterloo

Oxford Circus
12 mins

Green Park
13 mins

Tottenham Ct Rd
14 mins

Bond Street
16 mins

London Victoria
16 mins

Clapham Junction
20 mins



Blackfriars

Farringdon
8 mins

Kings Cross
17 mins

East Croydon
27 mins

Luton Airport
45 mins

Gatwick Airport
40 mins

Cambridge
1h 21 mins



SE1 A NEIGHBOURHOOD REJUVENATED

LOWER MARSH MARKET



THE SOUTH BANK



This part of London really does have it all. World-class restaurants, bars and street food markets sit alongside theatres, boutiques and art houses. All surrounded by green spaces for the perfect balance.



BOROUGH YARDS

FOOD & DRINK

The home of London's thriving food and drink scene, you'll be spoilt for choice for breakfast, lunch or dinner.



MC & SONS

Sit back and relax in this traditional Irish pub, which is just round the corner from The Risborough. Serving up Thai cuisine alongside an eclectic beer selection, it's the ideal place to get together after a busy day in the office.



2 mins walk from
The Risborough



THE HOXTON

One of London's hottest new locations, The Hoxton is home to a rooftop restaurant and casual brunch spot, making it the perfect pit stop no matter what time of day. Enjoy panoramic views of London over a bite to eat or sample some killer cocktails at ground level; the choice is yours.



8 mins walk from
The Risborough



BOROUGH MARKET

Serving up sensational food and drink since 1756, Borough Market is a world-renowned culinary hotspot in the heart of London. While it's been here for centuries, the offering never gets old; people from all over the world visit to sample the street food, which puts sustainable production and social connection at the forefront of mind.



11 mins walk from
The Risborough



BOROUGH YARDS

A vibrant new London destination to shop, eat, work and play. Located right next to the famous culinary delights of Borough Market, this medieval street is packed with places to go and things to do including an Everyman Cinema, plenty of dining options, and designer boutiques.



11 mins walk from
The Risborough

VISION

BUILDING

AREA

CONTACT



FLAT IRON SQUARE

THE GENTLEMEN BARISTAS



OXO TOWER



LOWER MARSH MARKET



AL FRESCO AT THE SOUTHBANK

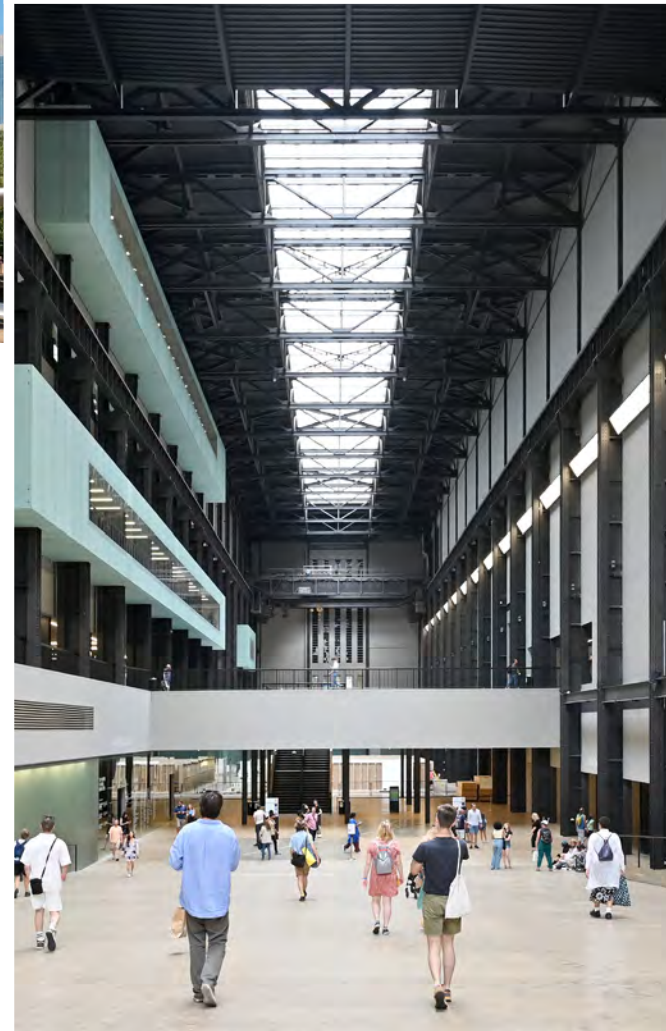


TATE MODERN

EVERYMAN CINEMA



BFI SOUTHBANK



CULTURE

For cultural connoisseurs looking to get the most out of the city, there's no better place than Southwark. The area has more museums and galleries than any other part of London. Take in a play at Shakespeare's Globe or the Young Vic, appreciate art at Tate Modern and the OXO Gallery, or take a stroll to Southbank to explore The National Theatre, BFI and the Hayward Gallery.



Another quality development by TLS.
www.tailoredlivingsolutions.com



Rob Macnab

+44 7905 300 160

rob.macnab@knightfrank.com

Marina Campbell

+44 7814 067 404

marina.campbell@knightfrank.com

Elizabeth Galbraith

+44 7966 247 607

elizabeth.galbraith@knightfrank.com



Ben Fisher

+44 7810 676 168

ben@usp.london

Rupert Cowling

+44 7736 880 317

rupert@usp.london

Max Humphreys

+44 7718 484 284

max@usp.london

17-21 Risborough Street, London, SE1 0HG

Union Street Partners and Knight Frank for themselves and for the lessors of this property whose agents they are give notice that: (1) the particulars are set out as a general outline only for the guidance of intending lessees, and do not constitute part of an offer or contract; (2) all descriptions, dimensions, references to condition and necessary permissions for use and occupation, and other details are given in good faith and are believed to be correct, but any intending lessees should not rely on them as statements or representations of fact but satisfy themselves by inspection or otherwise as to the correctness of each of them; (3) no person in the employment of Union Street Partners and Knight Frank has any authority to make or give any representation or warranty whatever in relation to this property. March 2024.

www.therisborough.com