

  
**BROOKLEA**  
*Chillington*

Brooklea Lane, Chillington, Kingsbridge, South Devon

No. 11

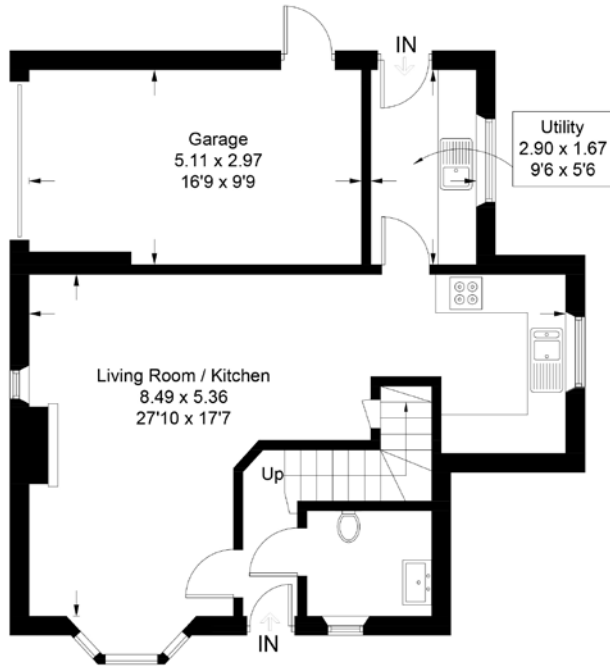


No. 11 Brooklea Lane is a unique, detached three bedroom house with family bedroom, ensuite and cloakroom. The house has a large open plan living/dining/kitchen space, separate utility room and is well positioned, looking down the lane and over nearby farmland.

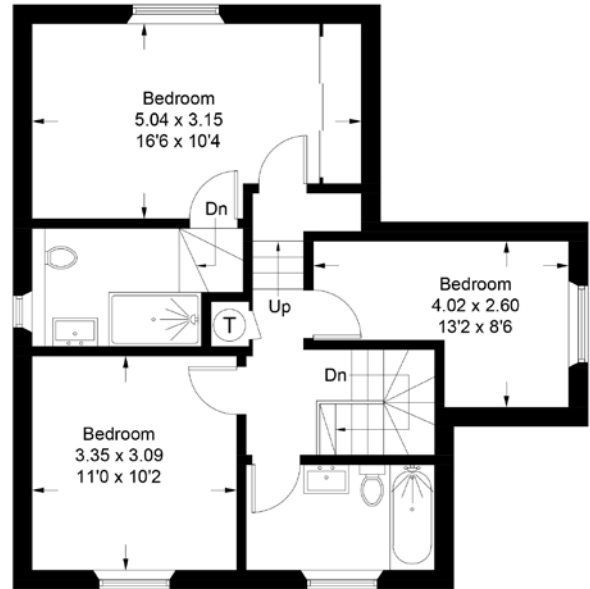
There is a large integral garage with additional outside space adjacent. External access to the garden is possible from both sides of the property.

## 11 Brooklea

Approximate Gross Internal Area = 101.4 sq m / 1091 sq ft  
Garage = 16 sq m / 172 sq ft  
Total = 117.4 sq m / 1263 sq ft



Ground Floor



First Floor

FREEHOLD

Postcode - TQ7 2FE  
Premier New Homes Warranty  
EPC - C  
Council Tax Band - D  
South Hams District Council  
Mains water, electricity, and drainage, LPG gas

  
**BROOKLEA**  
*Chillington*



BrookleaChillington.co.uk  
+44 (0) 1494 410 230  
enquiries@ashmill.co.uk  
Brooklea Lane, Chillington, Kingsbridge, Devon TQ7 2FE

Disclaimer: Ash Mill Developments and any agents have no authority to make or give any representations or warranties in relation to the property. These particulars do not form part of any offer or contract and must not be relied upon as statements or representations of fact. Any areas, measurements or distances are approximate. The text, photographs and plans are for guidance only and are not necessarily comprehensive. It should not be assumed that the property has all the necessary planning, building regulation and other consents nor have any services, equipment or facilities been tested. Purchasers must satisfy themselves by inspection or otherwise.