



Francis Stuart

Sales • Lettings • Investments

127 Pasley Street

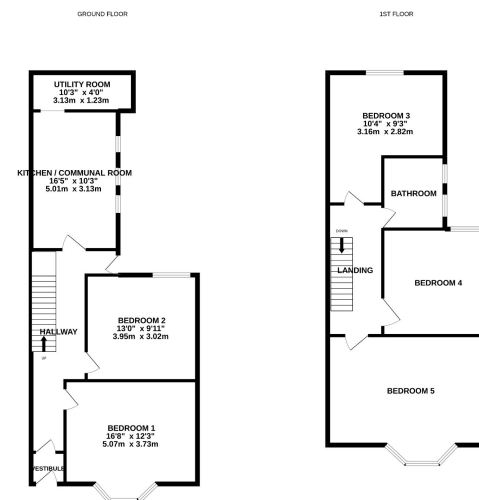
Guide Price £190,000

🛏 5 🚿 1 🚽 1



Guide Price: £190,000-£200,000A 5 DOUBLE BEDROOM HMO HOUSE or FAMILY HOME with KITCHEN / DINER / COMMUNAL AREA and COURTYARD with CURRENT GROSS FULLY LET INCOME of £21,480 PER YEAR in the POPULAR AREA of STOKE, PLYMOUTH.





40 Mannamead Road, Mutley, Plymouth, PL4 7AF

01752 710047 | www.francis-stuart.co.uk | selling@francis-stuart.co.uk