



DALRYMPLE  
COLLECTION

BELHAVEN TERRACE WEST





NESTLED BEHIND THE TREES,  
THE FACADE OF BELHAVEN TERRACE PRESENTS A  
CHARMING FACE TO THE GRAND BOULEVARD THAT IS  
GREAT WESTERN ROAD.

Almost 150 years ago, esteemed architect James Thomson designed Belhaven Terrace and Belhaven Terrace West to be some of Glasgow's most distinguished 19th Century terraces.

Now that elegant Victorian facade with its classical dormers, bay windows and slate roofs is being respectfully restored whilst inside we have created fifteen contemporary two and three bedroom apartments.

Step outside to Belhaven Terrace West Lane and you enter a world of peace and serenity. This is where the past meets the future and we have created five modern villas. These three semi-detached and two detached, three and four bedroom homes promise to deliver a new West End experience.

Here at The Dalrymple Collection, where the new and the old sit perfectly together, you are afforded the luxury of choice. The golden honey sandstone creating a harmonious link between the Victorian Dalrymple Residences and the 21st Century Dalrymple Villas, perfectly aligned at the heart of the West End, the city's most creative and culturally rich neighbourhood.



## DALRYMPLE - RESIDENCES -

Formed within these Victorian townhouses, enjoying expansive views over Kirklee Terrace, each new apartment has been designed and built with meticulous attention to architectural detail and finish. Beautiful wrought iron staircases and decorative plaster cornices are restored to their former glory, while the outstandingly contemporary interiors combined with luxury specification kitchens and bathrooms combine to create imaginative living spaces. All fifteen apartments are individually designed and each one has its own unique character. With main front and rear door, private terrace, garden area and secure off-street parking, this is a very special place to live.

Every element of these apartments has been lovingly considered and crafted, all featuring a rich palette of natural materials, with refined and beautiful finishes to create a neutral canvas. These spaces combine elegant simplicity with discreet luxury. Warm tones and light touches respond to the colours of the beautiful surrounding residential streets of the West End.

This entire building has a quiet but commanding presence only moments from the bustle of Byres Road. It is a compelling testament to the history it evokes and now you can be part of that heritage.

Light within the residences generously shapes the modern lives and thoughtful living within each apartment. Each boasting the highest level of contemporary finish, with elegant, modern detailing. Throughout each apartment, careful thought and expert craftsmanship is evident. This is especially considered in the bathrooms and

kitchens which incorporate the best available materials, ergonomics, technical efficiency and ingenuity. Kitchens International are experts in the 'Art of the Kitchen'. Creating the harmonious heart of your home and your life, these are kitchens that put the comfort in comfort food. Helping you create a new way of living.

While Bathrooms and en-suites are beautifully finished in a refined, elegant style, incorporating contemporary suites by Porcelanosa with neutral tiling and underfloor heating creating sanctuaries of relaxation.







Indicative image of Belhaven Terrace West

## GLASGOW'S - WEST END -

In a city rich with desirable neighbourhood's, the West End continues to distinguish itself as one of the best, attracting an eclectic mix of the most discerning Glaswegians. Its distinctive streets are home to some of the city's finest restaurants and bars while a leisurely stroll will uncover world class art galleries, and unique independent retailers. The West End is whatever its residents need it to be: a glamorous location for exciting nights out with friends; a family-friendly setting for a walk in the Botanic Gardens; or a place of quiet repose to be savoured with a cup of coffee and a good book. Whether sitting at your favourite table in The Ubiquitous Chip, watching a late night film in The Grosvenor or simply strolling the side streets on a Sunday afternoon, this is the classic West End experience.

Living here, Dalrymple residents are just steps away from everything. From green spaces to eating and drinking places, the options are endless. The dynamism and energy of the city revolves around you, as easy accessibility to transportation takes you anywhere in the city your heart leads you.





## DALRYMPLE RESIDENCES - SPECIFICATION -

Fitted German Leicht Kitchens designed by Kitchens International with integrated Siemens appliances including stainless steel oven/micro combi and dishwasher  
electric induction hob / integrated fridge freezer / wine fridge.  
Each apartment will have a utility cupboard with washer/dryer.  
Wall hung WC's and wash hand basins with under sink storage.

Sanitary ware provided by Porcelanosa.

Fitted mirrors in all bathrooms and en-suites.

Under floor heating to all bathrooms and en-suites.

Gas fired boiler providing hot water and efficient central heating system.

Freestanding wardrobes by German manufacturer Rauch to all bedrooms including built in drawers and hanging space.

Internal panelled doors with satin chrome ironmongery.

New double-glazed sash and case windows.

Feature column radiators to lounge.

\*Feature fireplace to lounge (plot specific, please check with your sales adviser).

Video entry system.

Communal garden with landscaping.

Allocated car parking space (plot specific, please check with your sales adviser).

Individual secured bike storage units (for all units without a garage).

IN ADDITION EACH APARTMENT HAS THE FOLLOWING CHOICES\*

Amtico to lounges and hall areas.

Quality wool carpeting to bedrooms and stairs where applicable.

Colour finishes in kitchen.

Solid worktop finishes.

Coloured glass splash back.

Porcelanosa tiling to en-suite and bathroom walls and floors.

*\*Subject to build programme (Please check with your sales adviser)*

*Where kitchens and bathrooms are placed within the floor plans, they are indicative only of where they sit within the apartments however are not a true reflection of where any one thing might be placed. Please refer to the sales adviser for specific apartment detail.*



EVERY HOME IN THE DALRYMPLE COLLECTION IS ENHANCED BY A SOPHISTICATED RANGE OF CAREFULLY SELECTED FIXTURES & FITTINGS.

 KITCHENS INTERNATIONAL PORCELANOSA



*Indicative images are shown for illustrative purposes only*

## DALRYMPLE RESIDENCES - FLOORPLANS -



### No.17 RESIDENCES - APARTMENT A GARDEN & GROUND DUPLEX/PRIVATE MAIN DOOR ENTRANCE



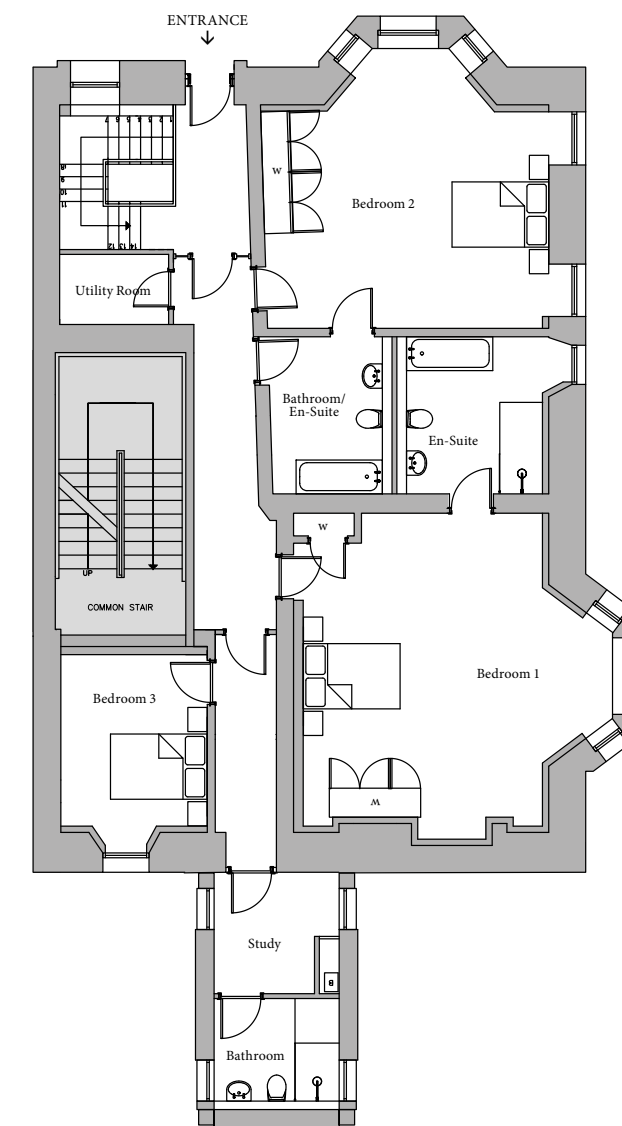
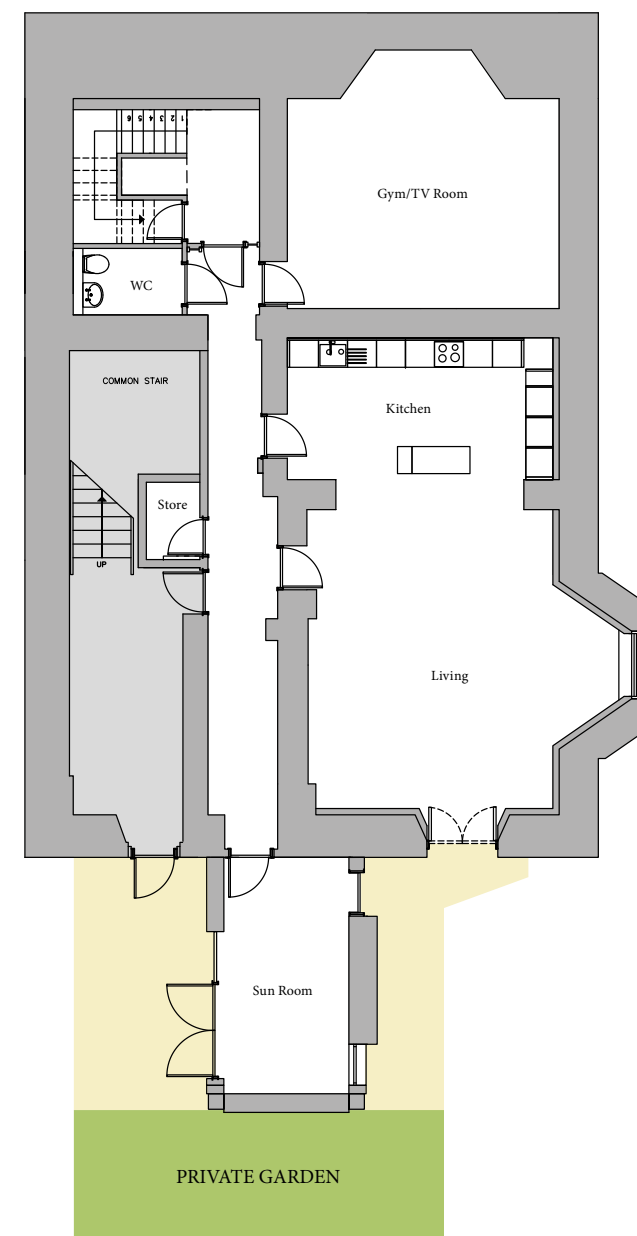
Any areas, measurements or distances referred to are given as a guide only and may not be precise.

#### SUB BASEMENT

Living / Kitchen	6130 x 6035	20'1" x 19'10"
Gym / TV Room	5115 x 5120	16'9" x 16'9"
W/C	2055 x 1470	6'9" x 4'10"
Sun Room	4895 x 2390	16'1" x 7'10"

#### BASEMENT

Bedroom 1	6245 x 5850	20'6" x 19'2"	Bedroom 3	4085 x 2870	13'5" x 9'5"
En-suite	3050 x 2740	10'0" x 8'11"	Utility Room	2555 x 1550	8'5" x 5'1"
Bedroom 2	5790 x 5460	18'11" x 17'11"	Study	2506 x 2390	8'3" x 7'10"
En-suite	3050 x 2280	10'0" x 7'6"	Bathroom	2390 x 2120	7'10" x 6'11"

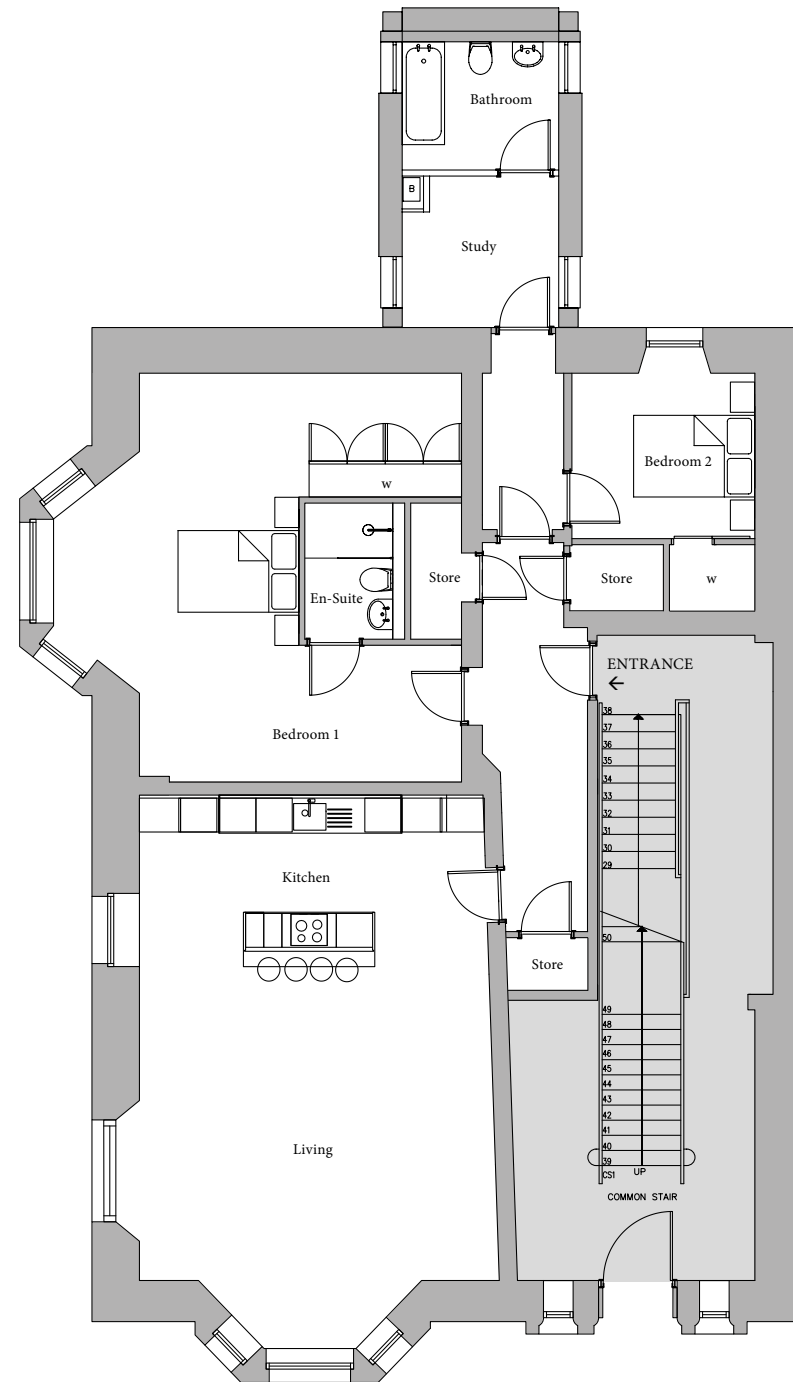




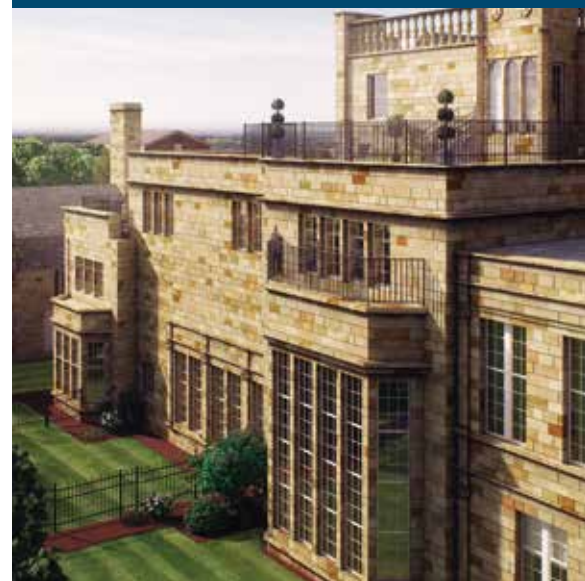
**No.17 RESIDENCES**  
APARTMENT 0/1 - GROUND FLOOR

Any areas, measurements or distances referred to are given as a guide only and may not be precise.

Living / Kitchen	9100 x 5775	29'8" x 18'9"
Bedroom 1	6460 x 6200	21'2" x 20'4"
En-suite	2250 x 1450	7'5" x 4'9"
Bedroom 2	3170 x 2875	10'5" x 9'5"
Study	2500 x 2390	8'2" x 7'10"
Bathroom	2390 x 2120	7'10" x 6'11"



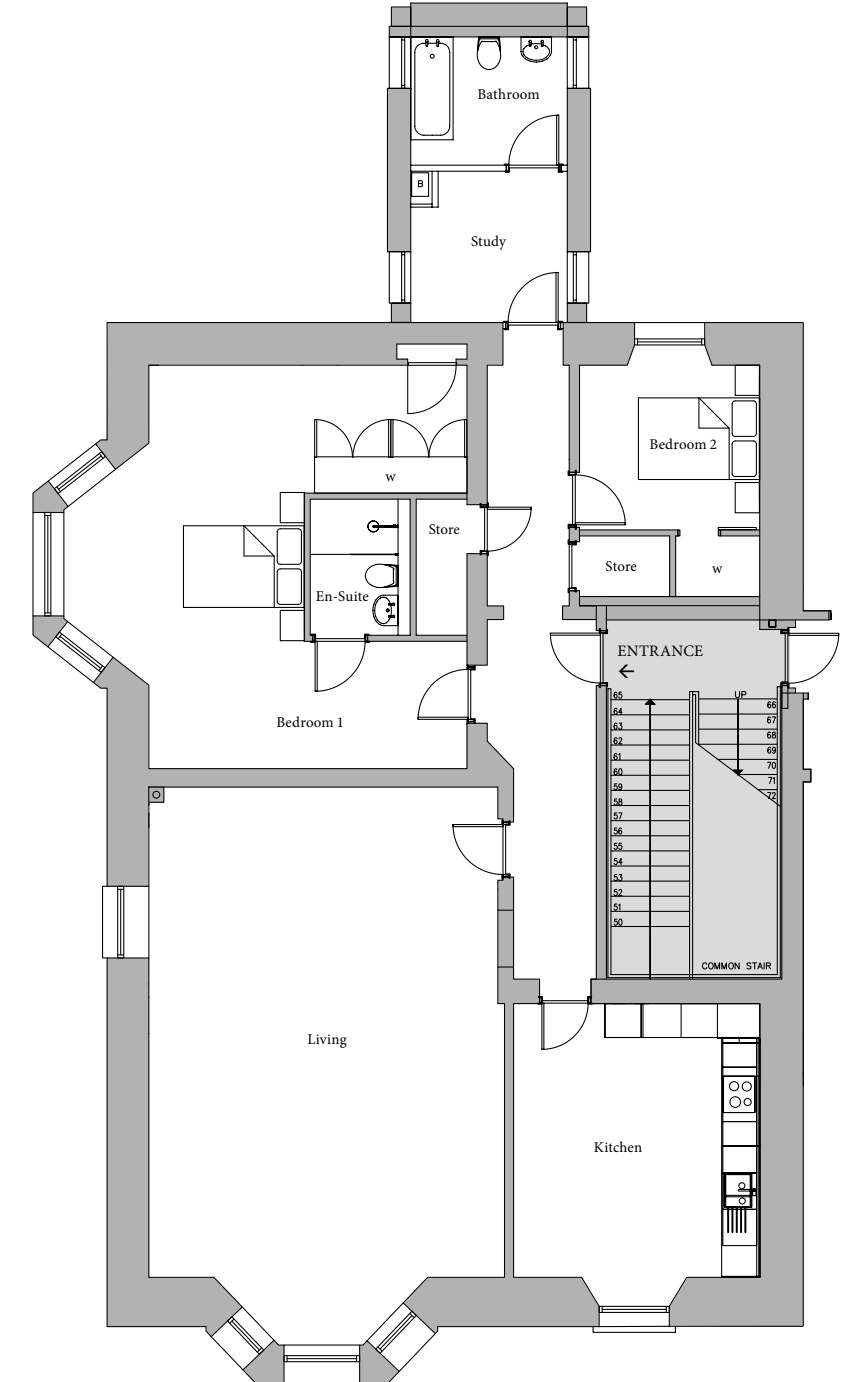
PREVIOUS DEVELOPMENT  
KIRKLEE MANSIONS



**No.17 RESIDENCES**  
APARTMENT 1/1 - FIRST FLOOR

Any areas, measurements or distances referred to are given as a guide only and may not be precise.

Living	8605 x 4605	28'3" x 15'1"
Kitchen	4700 x 4065	15'5" x 13'4"
Bedroom 1	6360 x 6120	20'10" x 20'1"
En-suite	2250 x 1450	7'5" x 4'9"
Bedroom 2	3055 x 2830	10'0" x 9'3"
Study	2500 x 2390	8'2" x 7'10"
Bathroom	2390 x 2120	7'10" x 6'11"



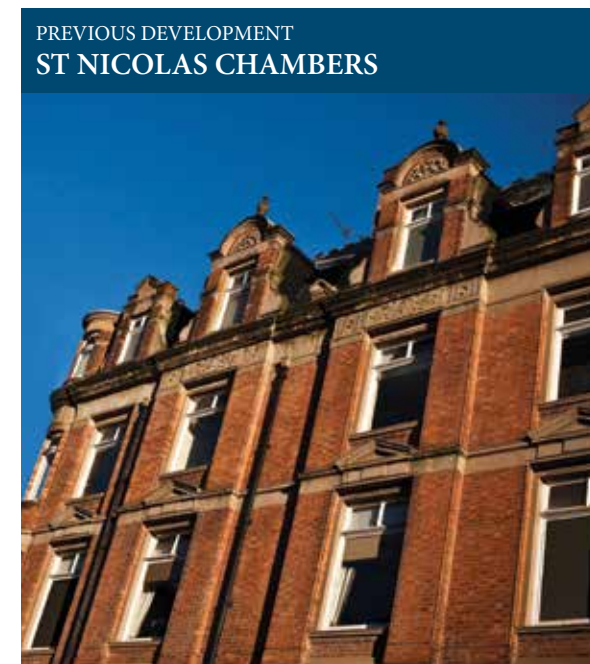
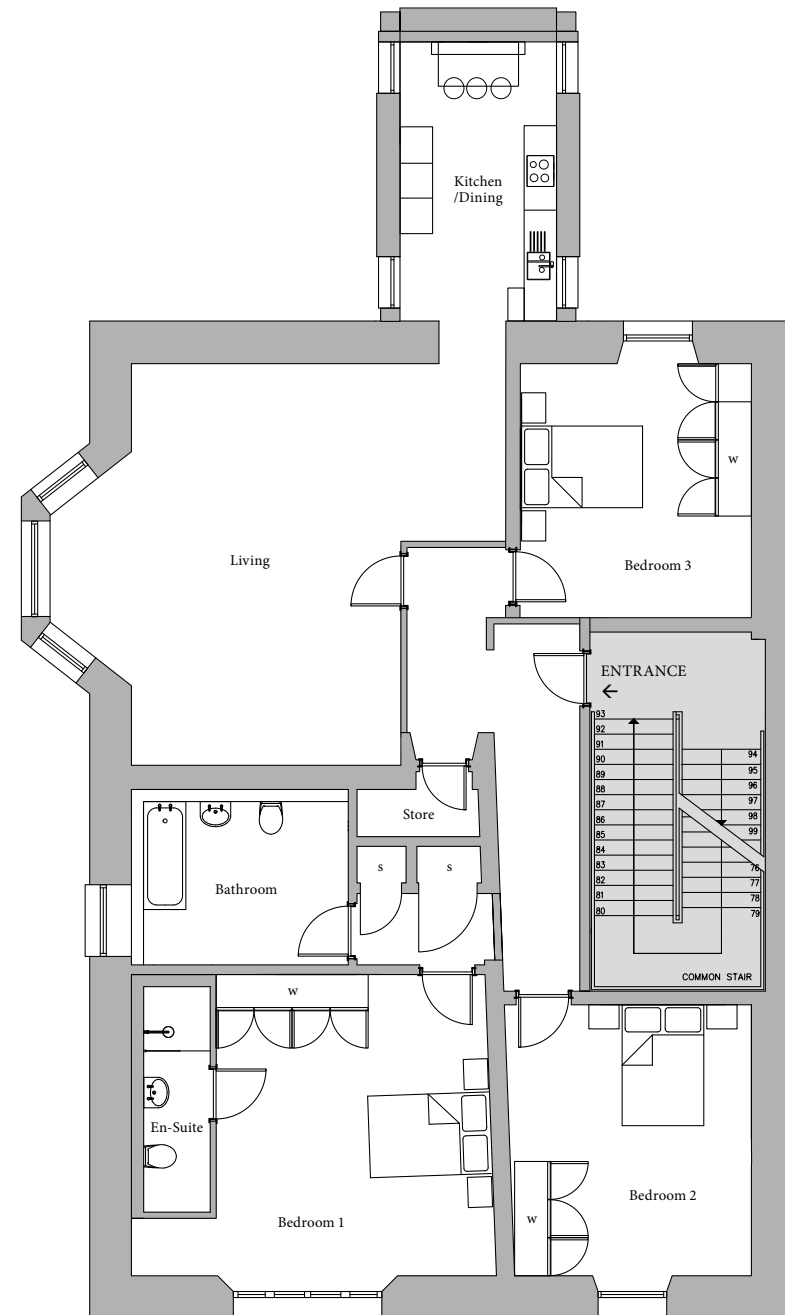
PREVIOUS DEVELOPMENT  
LILYBANK TERRACE



**No.17 RESIDENCES**  
APARTMENT 2/1 - SECOND FLOOR

Any areas, measurements or distances referred to are given as a guide only and may not be precise.

Living	7535 x 6640	24'9" x 21'9"
Kitchen / Dining	4895 x 2390	16'1" x 7'10"
Bedroom 1	5240 x 4550	17'2" x 14'11"
Bedroom 2	4740 x 3765	15'7" x 12'4"
Bedroom 3	4575 x 3670	15'0" x 12'0"
Bathroom	3385 x 2705	11'1" x 8'10"

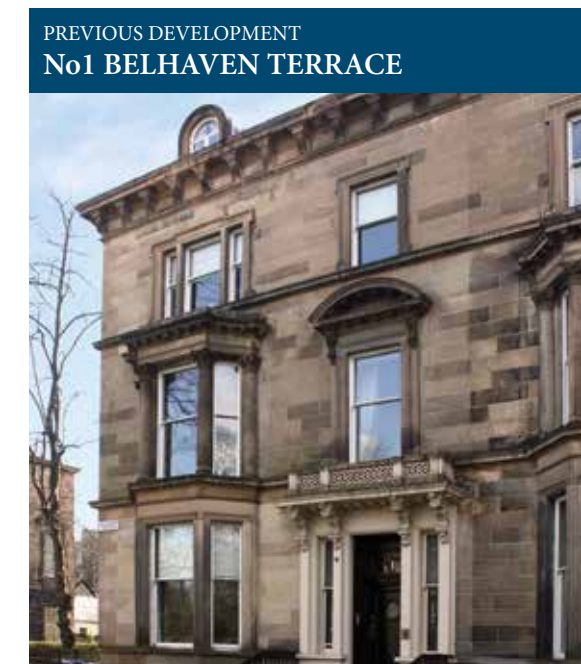
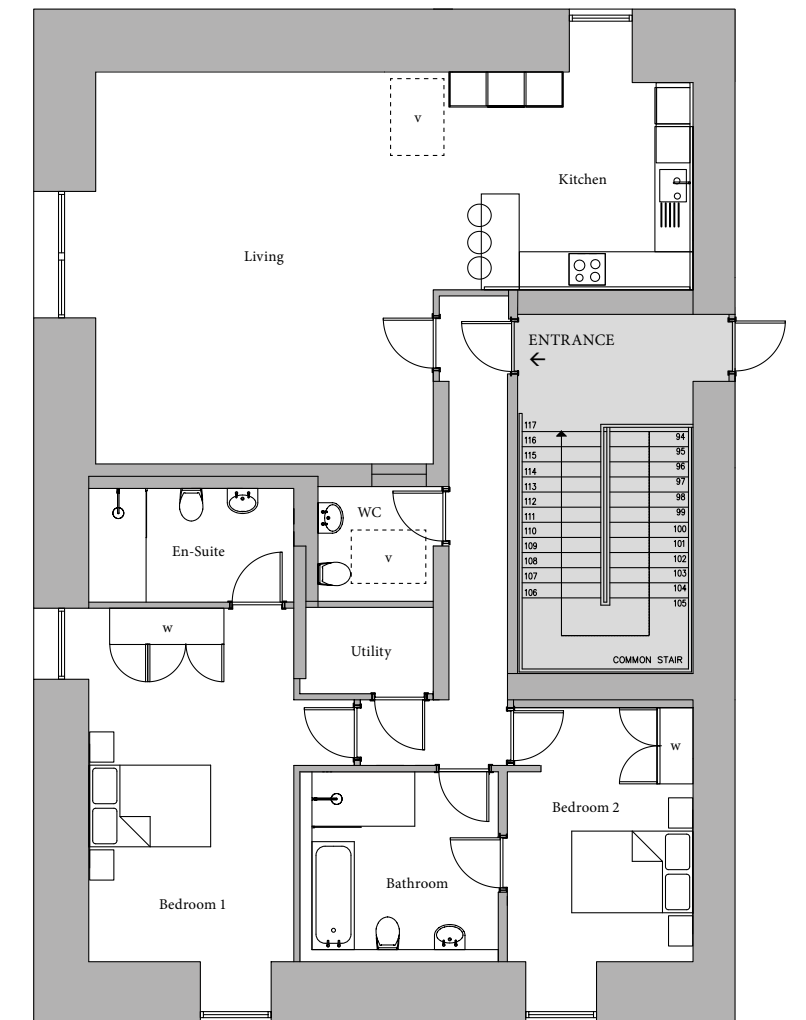


PREVIOUS DEVELOPMENT  
**ST NICOLAS CHAMBERS**

**No.17 RESIDENCES**  
FLAT 3/1 - THIRD FLOOR

Any areas, measurements or distances referred to are given as a guide only and may not be precise. v = velux window.

Living / Kitchen	9870 x 6305	32'5" x 20'8"
Bedroom 1	5845 x 3390	19'2" x 11'1"
En-suite	3390 x 1880	11'1" x 6'2"
Bedroom 2	4200 x 3070	13'9" x 10'1"
Bathroom	3080 x 2940	10'1" x 9'8"
W/C	2105 x 1880	6'11" x 6'2"
Utility Room	2015 x 1430	6'6" x 4'6"



PREVIOUS DEVELOPMENT  
**No.1 BELHAVEN TERRACE**



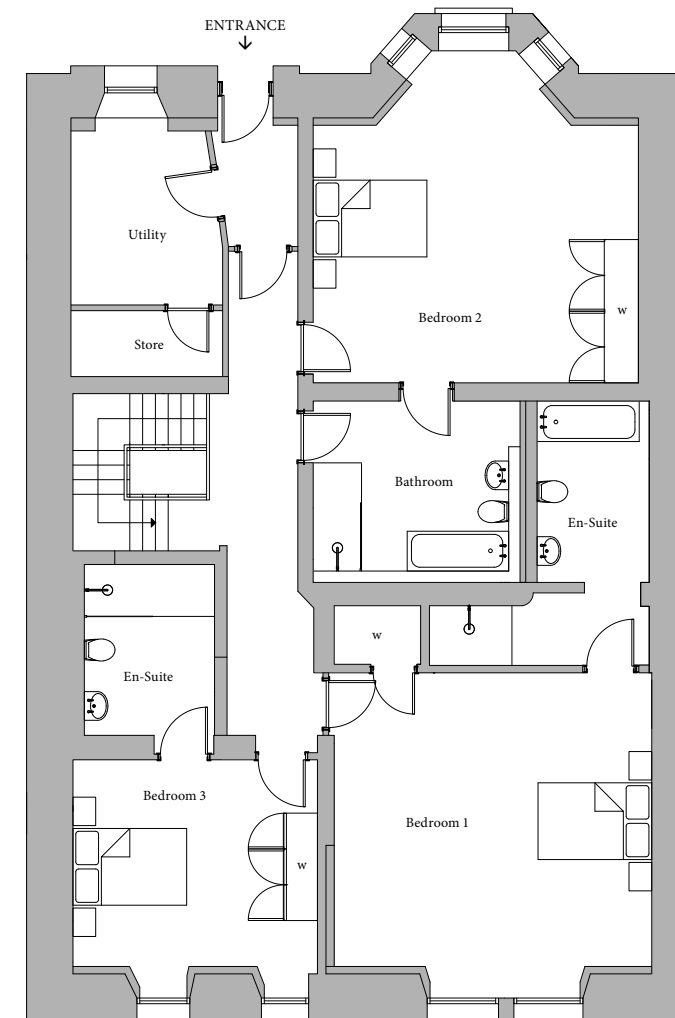
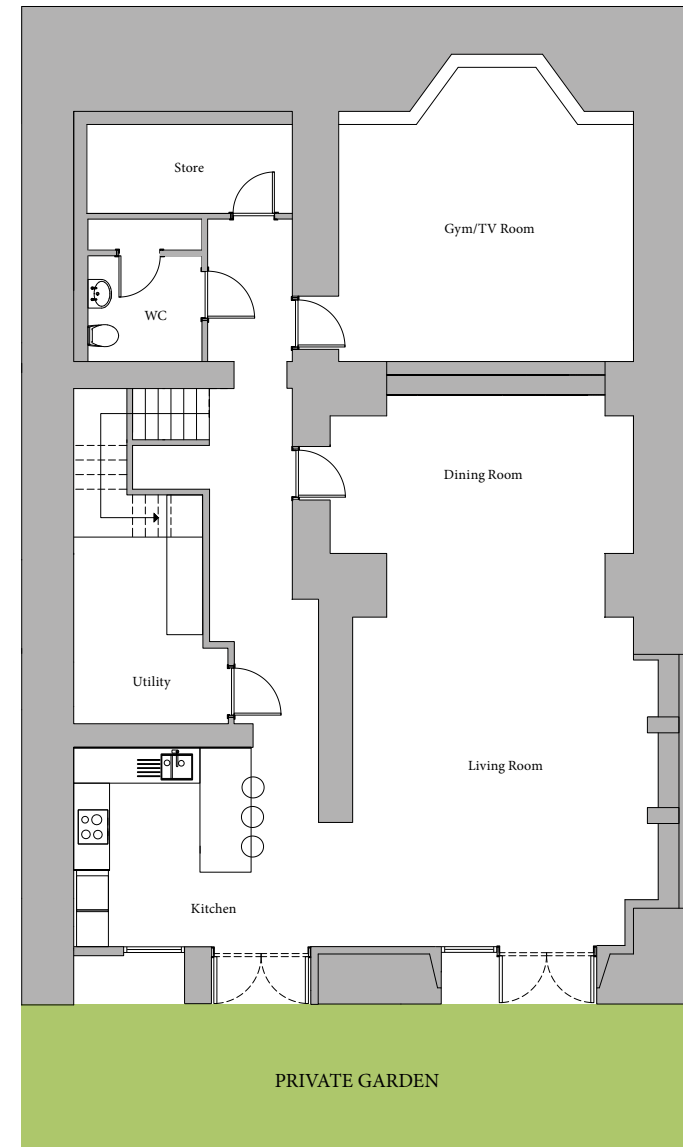
**No.18 RESIDENCES - APARTMENT A**  
GARDEN & GROUND DUPLEX/PRIVATE MAIN DOOR ENTRANCE



Any areas, measurements or distances referred to are given as a guide only and may not be precise.

SUB BASEMENT		
Living Room	5775 x 5165	18'11" x 16'11"
Dining Room	5145 x 3175	16'11" x 10'5"
Kitchen	3950 x 3485	12'11" x 11'5"
Gym / TV Room	4905 x 4970	16'1" x 16'4"
Utility	4220 x 2230	13'10" x 7'4"
W/C	2005 x 1860	6'7" x 6'1"
Store	3845 x 1565	12'6" x 5'1"

BASEMENT		
Bedroom 1	5350 x 4810	17'7" x 15'9"
En-suite	2900 x 1620	9'6" x 5'4"
Bedroom 2	5590 x 5420	18'4" x 17'9"
Bedroom 3	4055 x 4050	13'4" x 13'3"
En-suite	2850 x 2290	9'4" x 7'6"
Study	2700 x 2900	8'10" x 9'6"
Bathroom	3490 x 2900	11'5" x 9'6"
Utility	4220 x 2230	13'8" x 7'3"
Store	3845 x 1565	12'6" x 5'1"

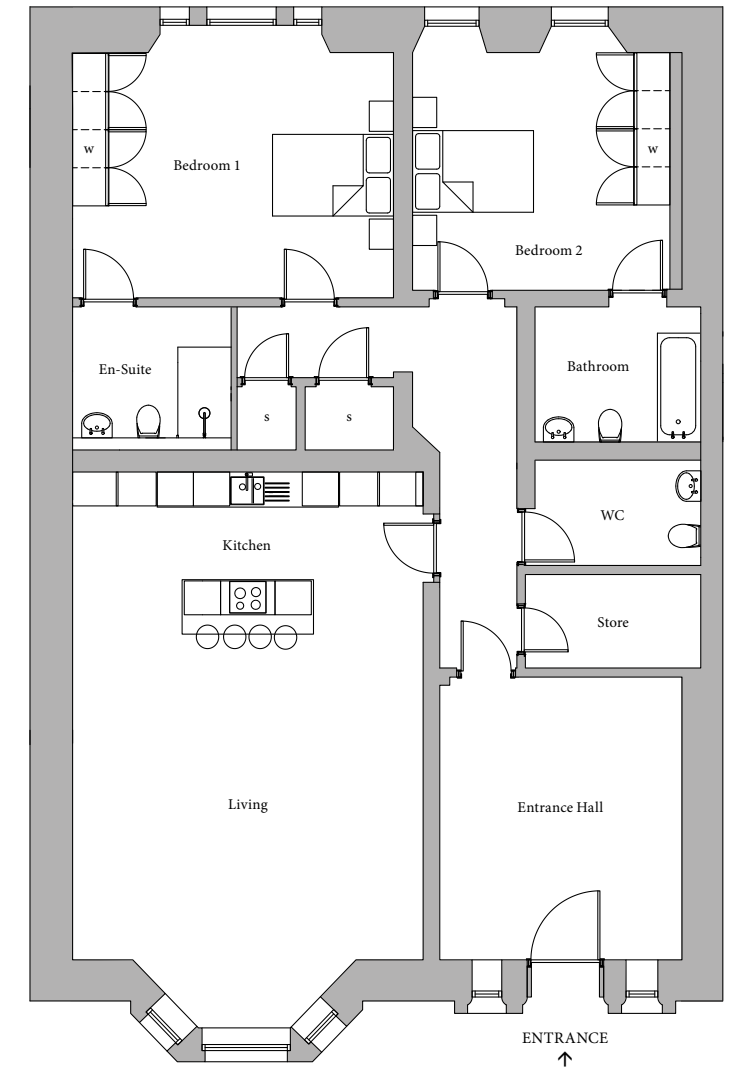


**No.18 RESIDENCES**  
FLAT 0/1 - GROUND FLOOR/PRIVATE MAIN DOOR ENTRANCE



Any areas, measurements or distances referred to are given as a guide only and may not be precise.

Entrance Hall	4680 x 3860	15'4" x 12'8"
Living / Kitchen	8970 x 5585	29'5" x 18'4"
Bedroom 1	4960 x 4400	16'3" x 14'5"
En-suite	2620 x 2020	8'7" x 6'8"
Bedroom 2	4710 x 4320	15'5" x 14'2"
Bathroom	2510 x 2040	8'3" x 6'8"
W/C	2310 x 1760	7'7" x 5'9"
Store	2310 x 1440	7'7" x 4'9"

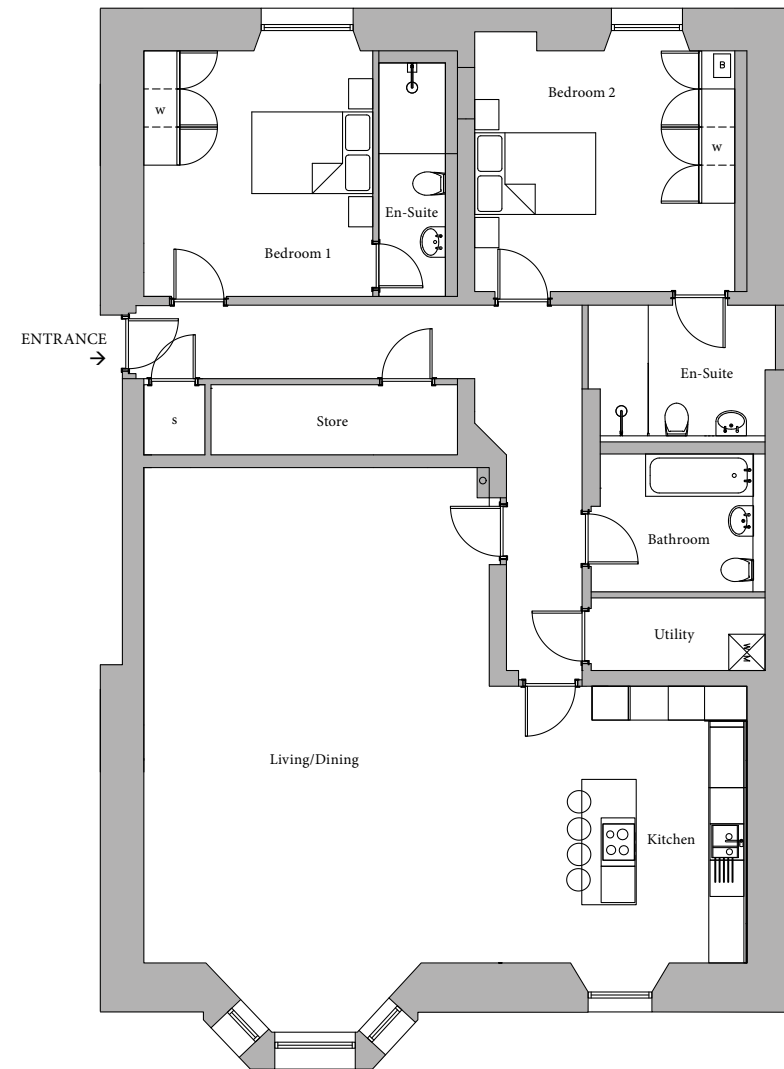




**No.17 RESIDENCES**  
APARTMENT 1/2 - FIRST FLOOR

Any areas, measurements or distances referred to are given as a guide only and may not be precise.

Living / Dining	8715 x 4545	28'7" x 14'11"
Kitchen	4780 x 4210	15'8" x 13'10"
Bedroom 1	4170 x 3570	13'8" x 11'9"
En-suite	4170 x 1100	13'8" x 3'7"
Bedroom 2	4270 x 4040	14'0" x 13'3"
En-suite	2780 x 1400	9'1" x 4'7"
Bathroom	2590 x 2590	8'6" x 8'6"
Utility	2590 x 1200	8'6" x 3'11"
Store	3900 x 980	12'7" x 3'2"



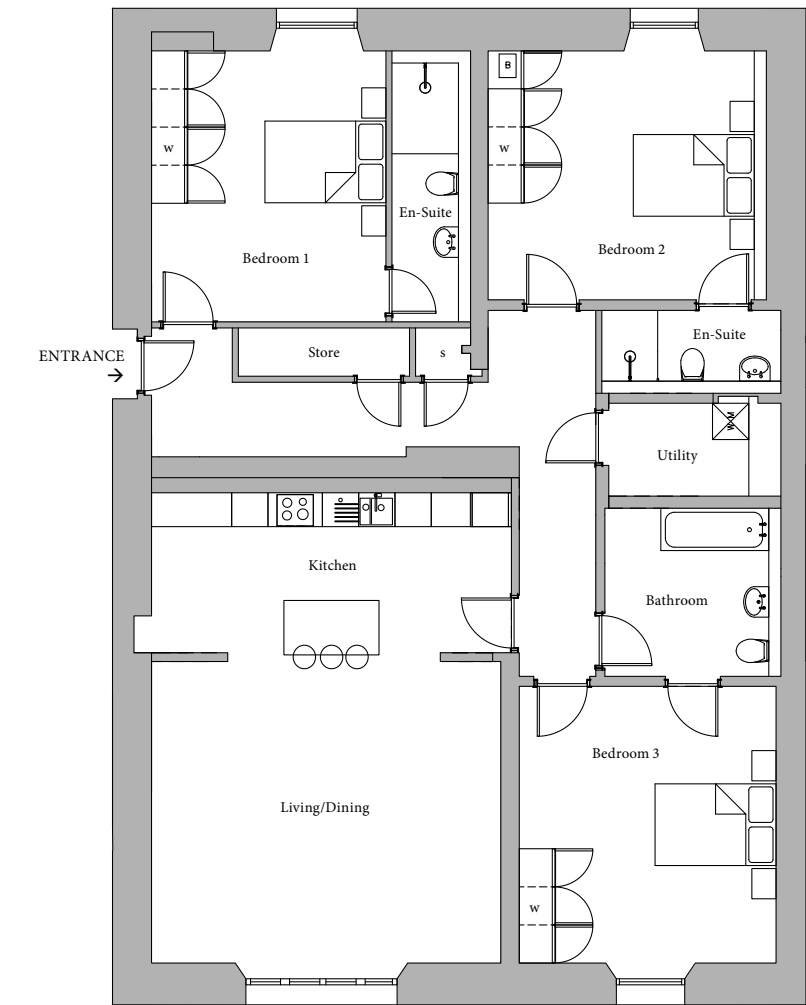
PREVIOUS DEVELOPMENT  
**THE LIBRARY - MERCHANT CITY**



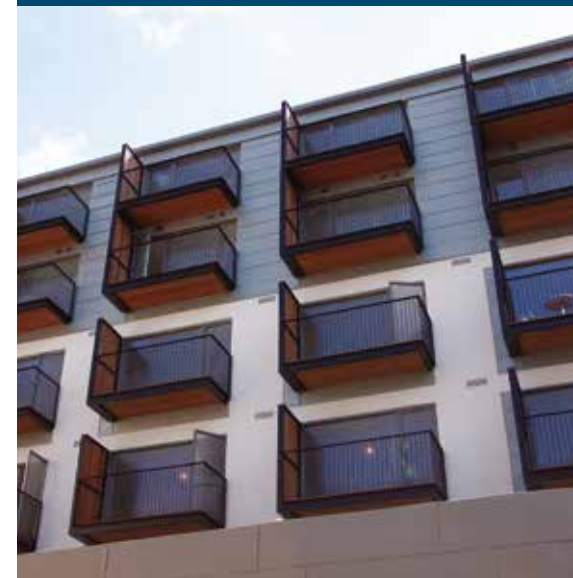
**No.17 RESIDENCES**  
APARTMENT 2/2 - SECOND FLOOR

Any areas, measurements or distances referred to are given as a guide only and may not be precise.

Living / Dining	5445 x 5015	17'10" x 16'5"
Kitchen	5445 x 2790	17'10" x 9'2"
Bedroom 1	4550 x 3560	14'11" x 11'8"
En-suite	4550 x 1100	14'11" x 3'7"
Bedroom 2	4275 x 4140	14'0" x 13'7"
En-suite	2850 x 950	9'4" x 3'1"
Bedroom 3	4600 x 3950	15'1" x 12'11"
Bathroom	2590 x 2765	8'6" x 9'1"
Utility	2830 x 1540	9'3" x 5'1"
Store	2835 x 830	9'3" x 2'7"



PREVIOUS DEVELOPMENT  
**VIRGINIA GALLERIES**

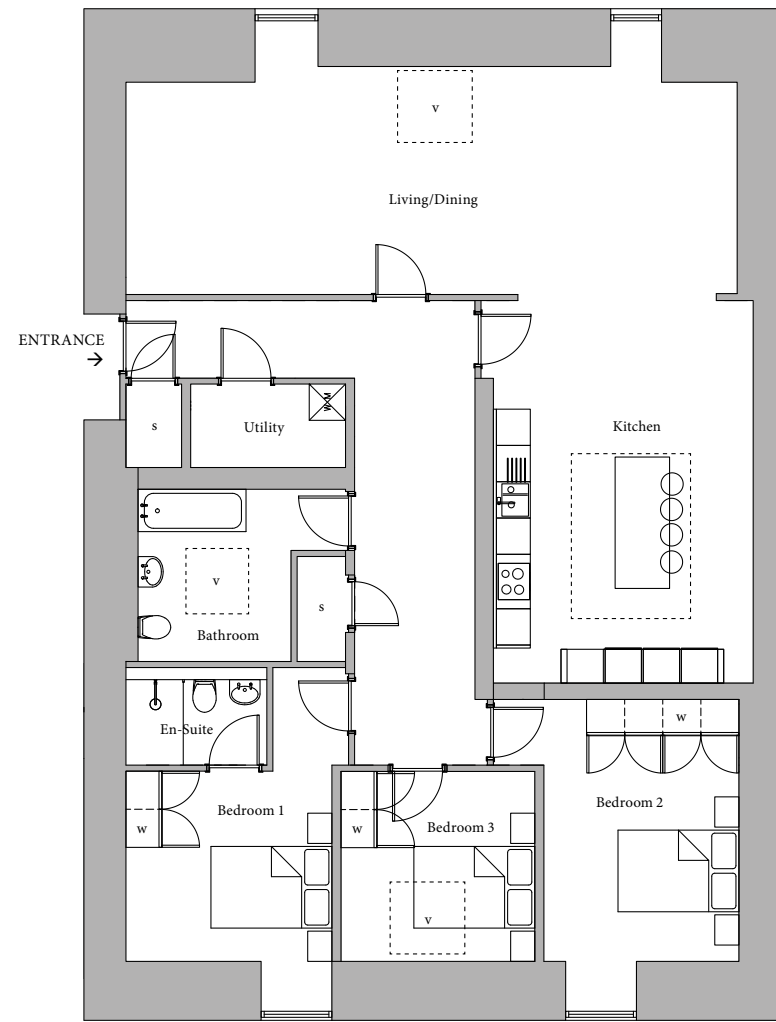




**No. 17 RESIDENCES**  
APARTMENT 3/2 - THIRD FLOOR

Any areas, measurements or distances referred to are given as a guide only and may not be precise. v = velux window.

Living / Dining	10110 x 3510	33'2" x 11'6"
Kitchen	6325 x 4295	20'9" x 14'1"
Bedroom 1	3140 x 3405	10'4" x 11'2"
En-suite	2335 x 1410	7'8" x 4'8"
Bedroom 2	4330 x 3225	14'2" x 10'7"
Bedroom 3	3205 x 3140	10'6" x 10'3"
Bathroom	3425 x 2845	11'3" x 9'4"
Utility	2560 x 380	8'5" x 1'3"



PREVIOUS DEVELOPMENT  
**THE RECTORY**  
DOWANHILL COLLECTION

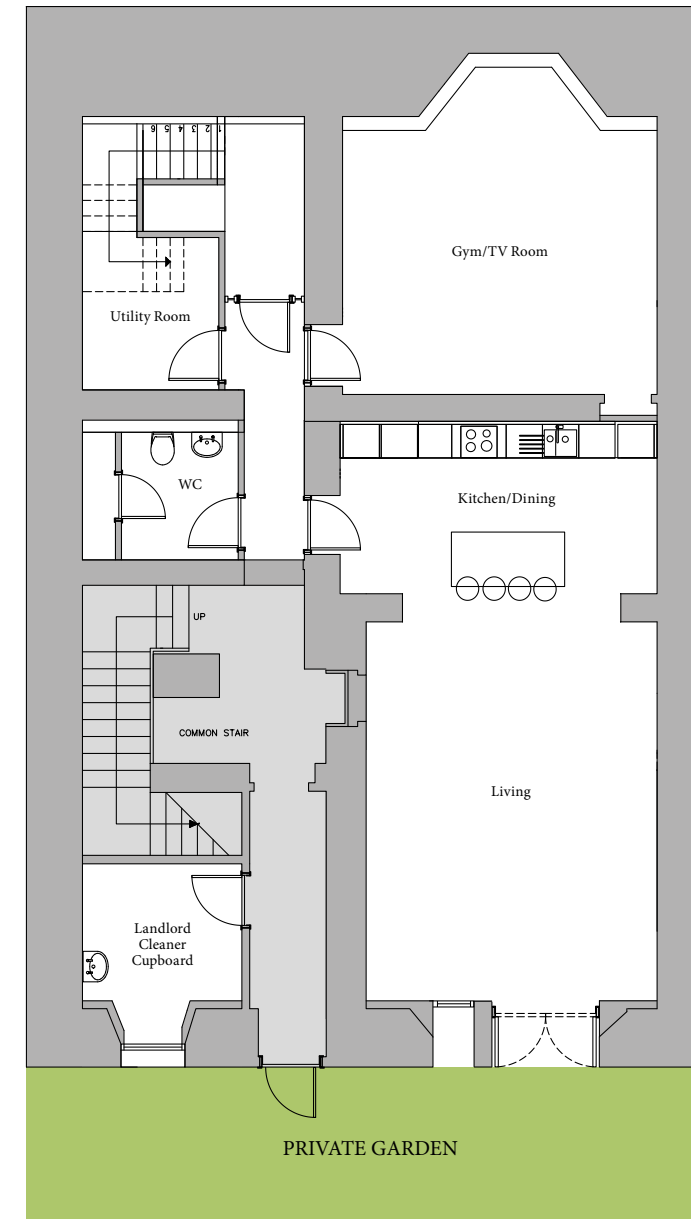


**No. 19 RESIDENCES - APARTMENT A**  
GARDEN & GROUND DUPLEX/PRIVATE MAIN DOOR ENTRANCE

Any areas, measurements or distances referred to are given as a guide only and may not be precise.

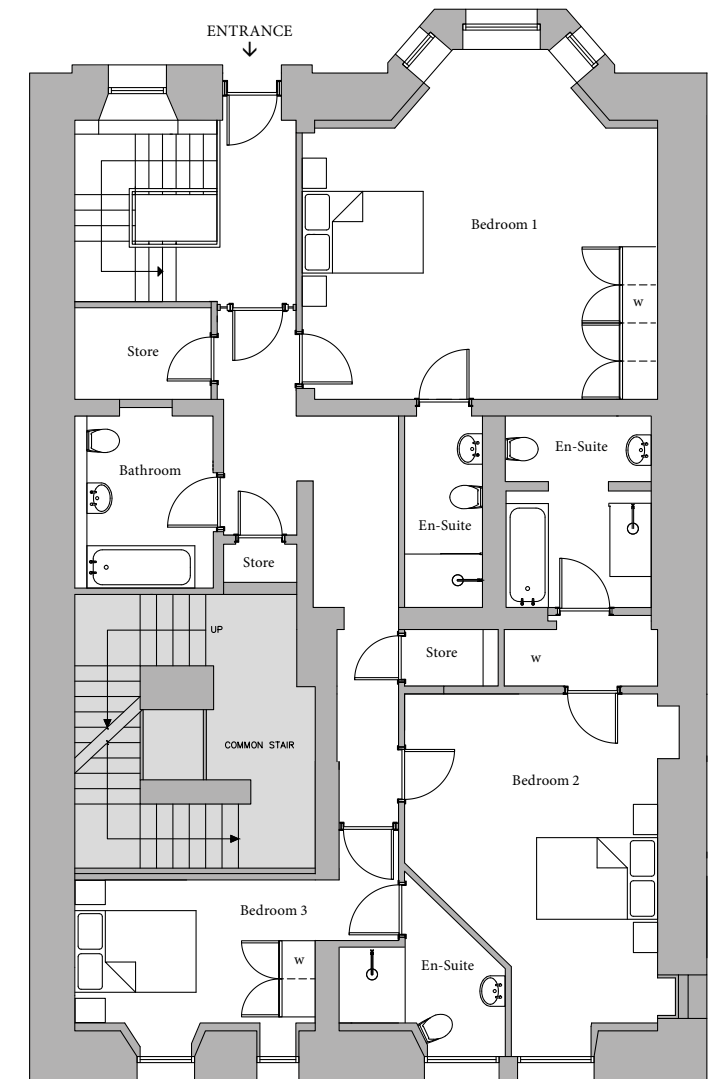
SUB BASEMENT

Living	5765 x 4500	18'11" x 14'9"
Kitchen / Dining	5090 x 2550	16'8" x 8'4"
Utility	2980 x 2435	9'9" x 7'11"
Gym / TV Room	5110 x 4900	16'9" x 16'1"
W/C	2425 X 2110	7'11" x 6'11"



BASEMENT

Bedroom 1	5700 x 5560	18'8" x 18'3"
En-suite	2850 x 1060	9'4" x 3'6"
Bedroom 2	6170 x 3570	20'3" x 11'9"
En-suite	2300 x 2500	7'5" x 8'2"
Bedroom 3	3800 x 2885	12'6" x 9'6"
En-suite	2500 x 1100	8'2" x 3'6"
Store	2240 x 1140	7'4" x 3'9"
Bathroom	2590 x 1860	8'6" x 6'1"





**No.19 RESIDENCES**  
APARTMENT 0/1 - GROUND FLOOR

Any areas, measurements or distances referred to are given as a guide only and may not be precise.

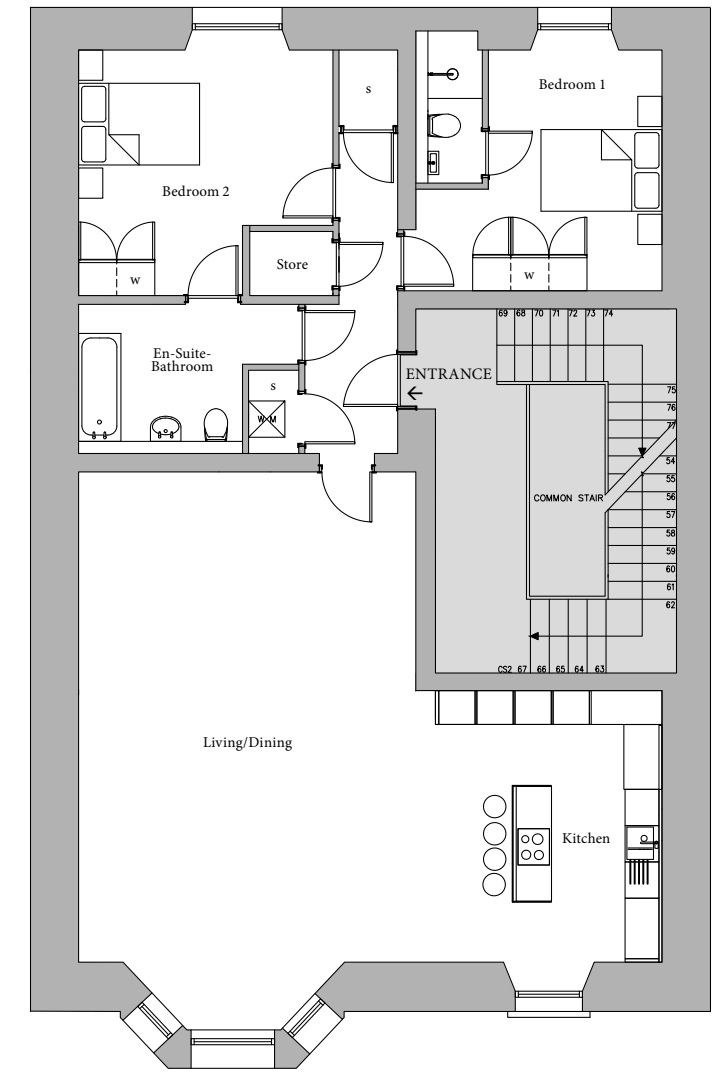
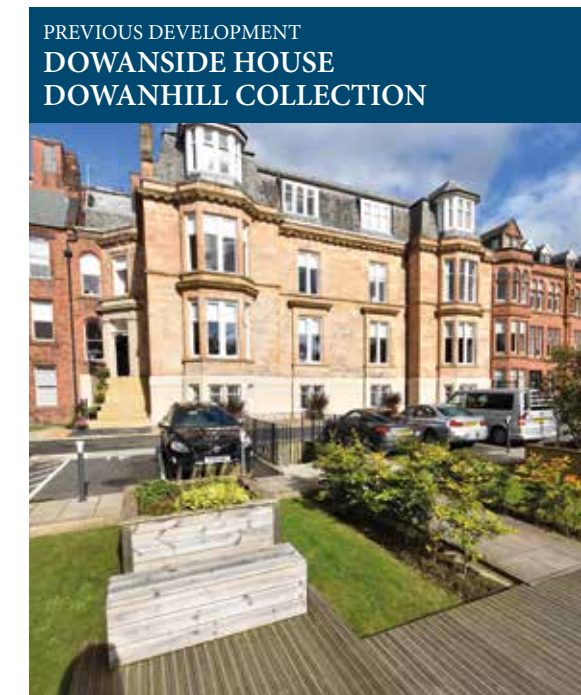
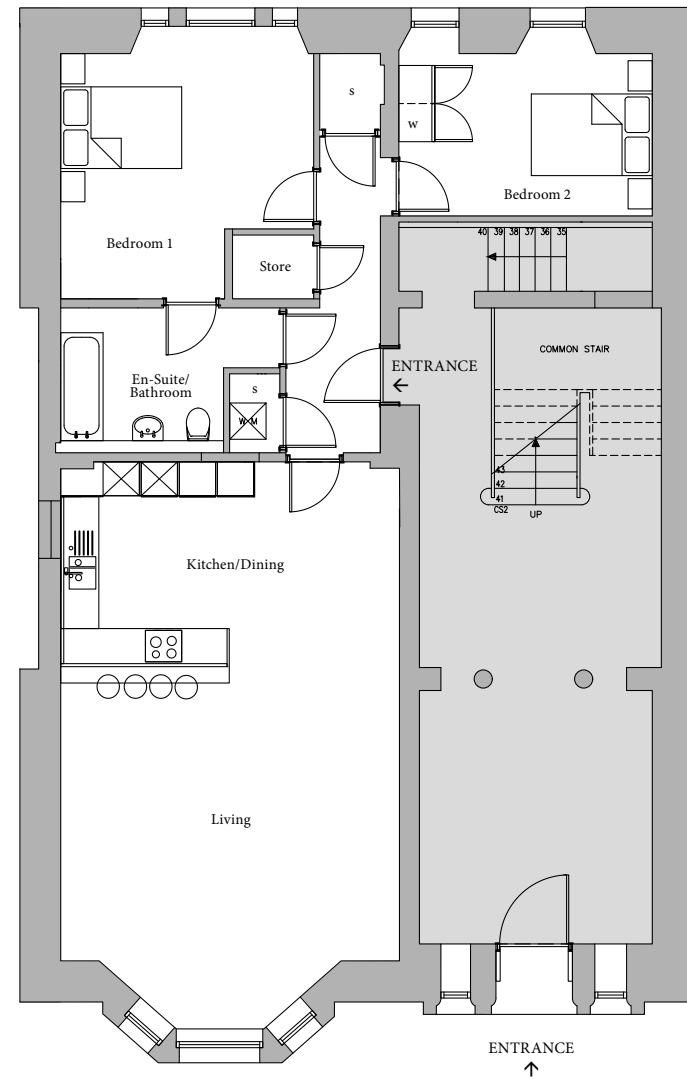
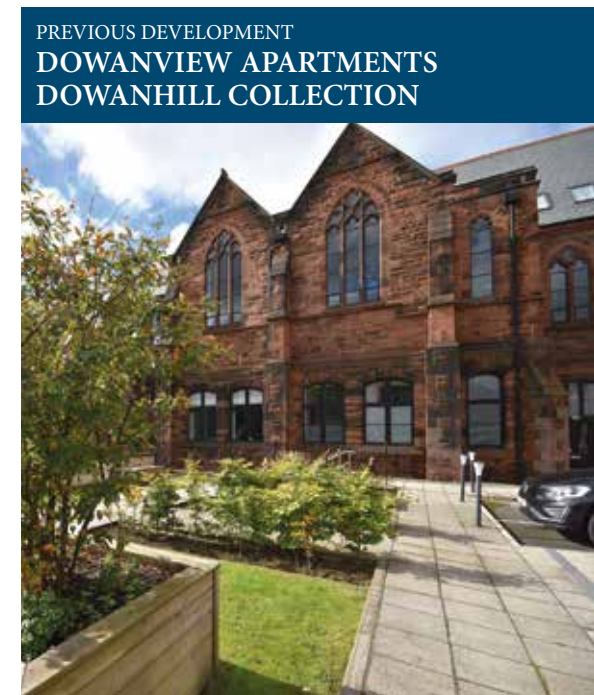
Living/Kitchen/Dining	9115 x 5350	29'11" x 17'7"
Bedroom 1	4300 x 3800	14'1" x 12'6"
En-Suite/Bathroom	3490 x 2150	11'5" x 7'1"
Bedroom 2	3870 x 3090	12'8" x 10'2"



**No.19 RESIDENCES**  
APARTMENT 1/1 - FIRST FLOOR

Any areas, measurements or distances referred to are given as a guide only and may not be precise.

Living/Dining	8755 x 5360	28'9" x 17'7"
Kitchen	4860 x 3920	15'11" x 12'10"
Bedroom 1	4085 x 3830	13'5" x 12'7"
En-Suite/Bathroom	3200 x 2000	10'6" x 6'7"
Bedroom 2	4200 x 3825	13'9" x 12'7"

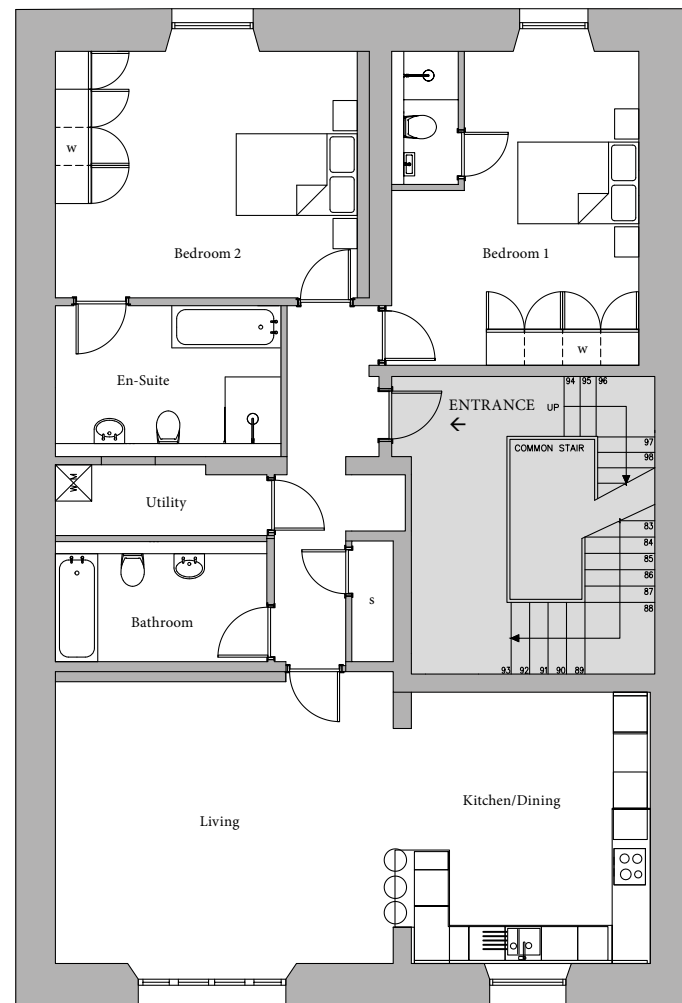
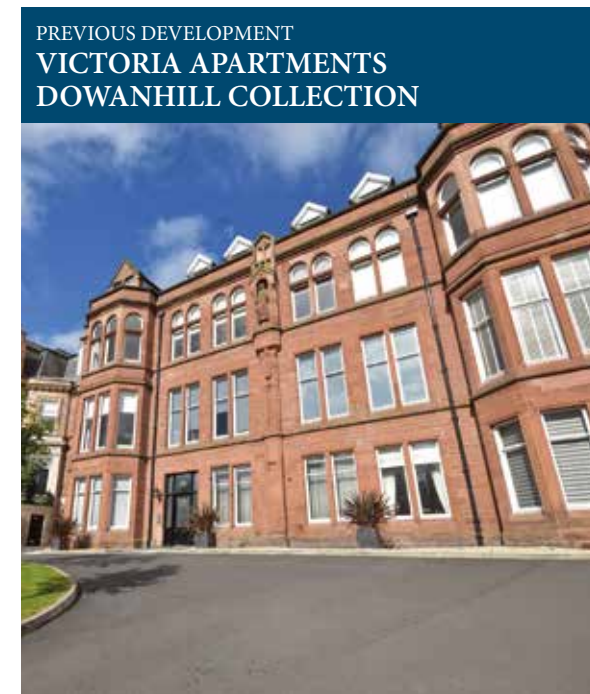




**No.19 RESIDENCES**  
APARTMENT 2/1 - SECOND FLOOR

Any areas, measurements or distances referred to are given as a guide only and may not be precise.

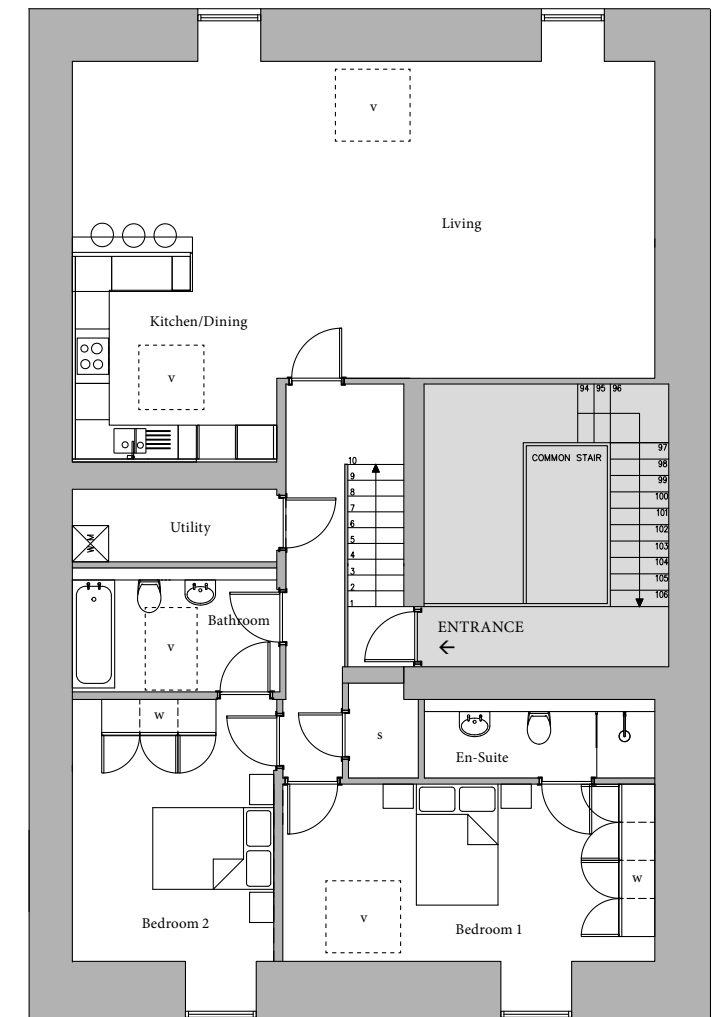
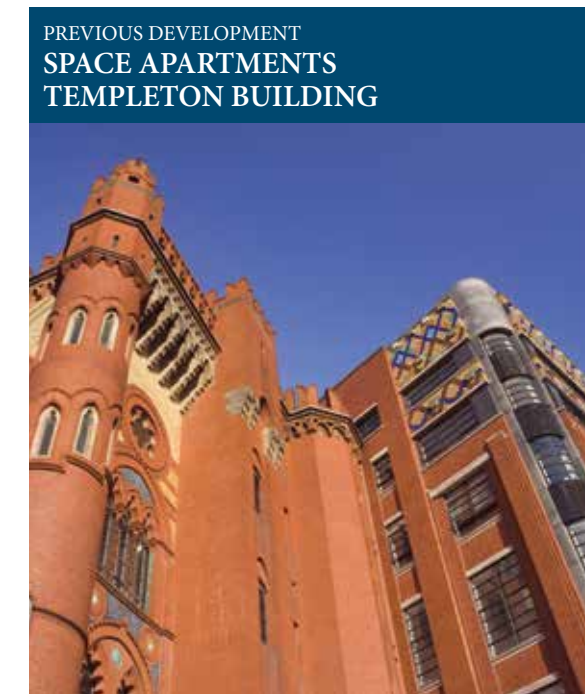
Living	5020 x 4900	16'6" x 16'1"
Kitchen / Dining	4500 x 3615	14'9" x 11'10"
Bedroom 1	5235 x 3815	17'2" x 12'6"
En-suite	2100 x 900	6'11" x 2'11"
Bedroom 2	4855 x 3920	15'11" x 12'10"
En-suite	3565 x 2165	11'8" x 7'1"
Bathroom	3500 x 1600	11'6" x 5'3"
Utility	3545 x 1135	11'8" x 3'9"



**No.19 RESIDENCES**  
APARTMENT 3/1 - THIRD FLOOR

Any areas, measurements or distances referred to are given as a guide only and may not be precise. v = velux window.

Living / Dining	9630 x 5240	31'7" x 17'2"
Kitchen	3380 x 1385	11'1" x 4'7"
Bedroom 1	6150 x 2930	20'2" x 9'7"
En-suite	3810 x 1100	12'6" x 3'7"
Bedroom 2	4330 x 3330	14'2" x 10'11"
Bathroom	3425 x 1850	11'3" x 6'1"
Utility	3425 x 1200	11'3" x 3'11"





## DALRYMPLE - VILLAS -

Here in Belhaven Terrace West Lane you can experience a completely new outlook in West End living. In the creation of these five mews homes, we have used an imaginative take on traditional architectural values. All homes feature a rich palette of natural materials inside and out with refined, beautiful finishes to create a neutral canvas. Every element has been lovingly considered and crafted to enhance your everyday wellbeing.

This is a world where you and your family can enjoy a world of privacy and serenity. Where you can wind down for the evening or weekend by stepping out onto your terrace or into your garden. This is your home, your universe. Here, at last, is a space where your mind and spirit can soar. Combining a clean, modern sensibility with traditional design values, featuring world renowned names including Leicht, Siemens and Porcelanosa, soft hues throughout are the perfect counterpoint to natural flooring.

Your precious outside space has been thoughtfully created to invigorate your senses. Landscaped gardens with designated parking for car, motorcycles and bicycles. Some of the villas even enjoy raised beds to make growing your own fruit, vegetable and flowers even easier.









## DALRYMPLE VILLAS - SPECIFICATION -

Fitted German Leicht Kitchens designed by Kitchens International with integrated Siemens appliances including stainless steel oven / micro combi and dishwasher electric induction hob / wine fridge / integrated fridge freezer.

Fitted built-in wardrobes to all bedrooms.

Wall hung WC's and wash hand basins with under sink storage.

Sanitary ware provided by Porcelanosa.

Fitted mirrors in all bathrooms and en-suites.

Under floor heating to all bathrooms and en-suites.

Air source heat pump system for efficient heating and hot water.

Underfloor heating throughout all ground floors.

Double glazing.

Internal oak veneer doors with satin chrome ironmongery.

Each apartment will have a utility cupboard with washer / dryer.

Private landscaped garden.

Integrated garage with power and water.

### IN ADDITION EACH VILLA HAS THE FOLLOWING CHOICES\*

Wooden flooring or Amtico to lounges and hall areas.

Quality wool carpeting to bedrooms and stairs where applicable.

Colour finishes in kitchen.

Solid worktop finishes.

Coloured glass splash back.

Porcelanosa tiling to en-suite and bathroom walls and floors.

*\* Subject to build programme*

*Where kitchens and bathrooms are placed within the floor plans, they are indicative only of where they sit within the apartments however are not a true reflection of where any one thing might be placed. Please refer to the sales adviser for specific apartment detail.*



*Indicative images are shown for illustrative purposes only*





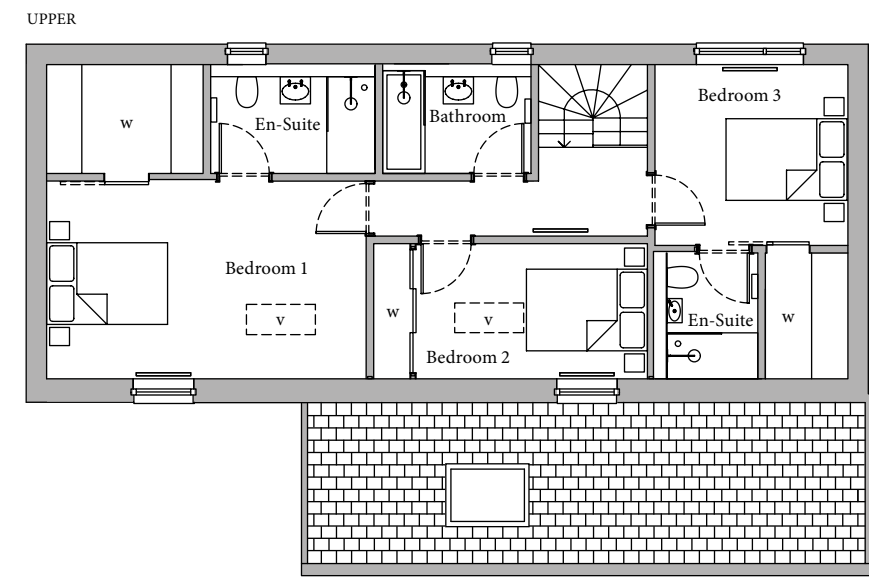
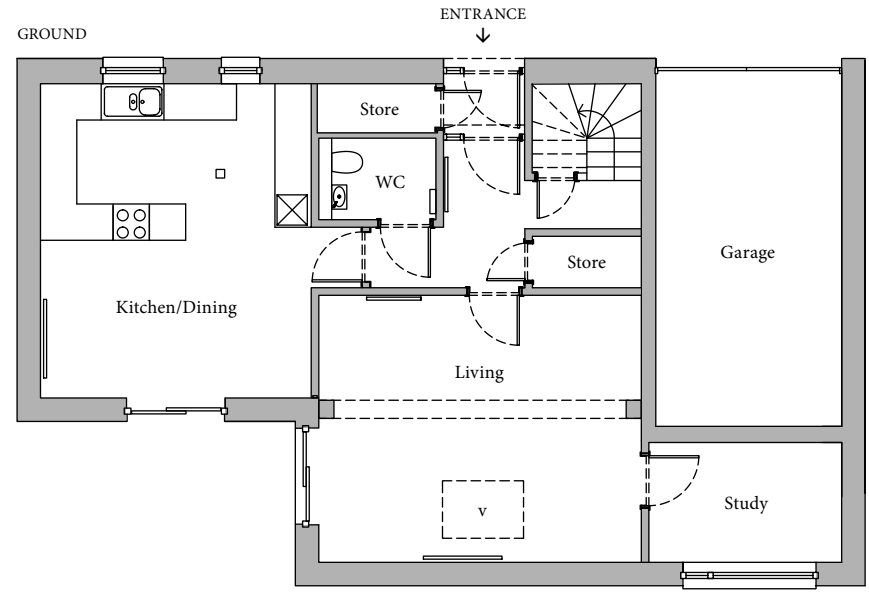
DALRYMPLE VILLAS - 1

Any areas, measurements or distances referred to are given as a guide only and may not be precise. v = velux window.

DALRYMPLE VILLAS - FLOORPLANS -



GROUND		
Kitchen / Dining	5195 x 4475	17'1" x 14'8"
Living	5330 x 4175	17'6" x 13'8"
Study	3185 x 1980	10'5" x 6'6"
W/C	1350 x 1735	4'5" x 5'8"
Garage	6000 x 3075	19'8" x 10'1"
UPPER		
Bedroom 1	5280 x 3270	17'4" x 10'9"
En-suite	2720 x 1800	8'11" x 5'11"
Bedroom 2	3825 x 2235	12'7" x 7'4"
Bedroom 3	3190 x 2990	10'6" x 9'10"
En-suite	2080 x 1500	6'8" x 4'9"
Bathroom	2450 x 1800	8'0" x 5'11"



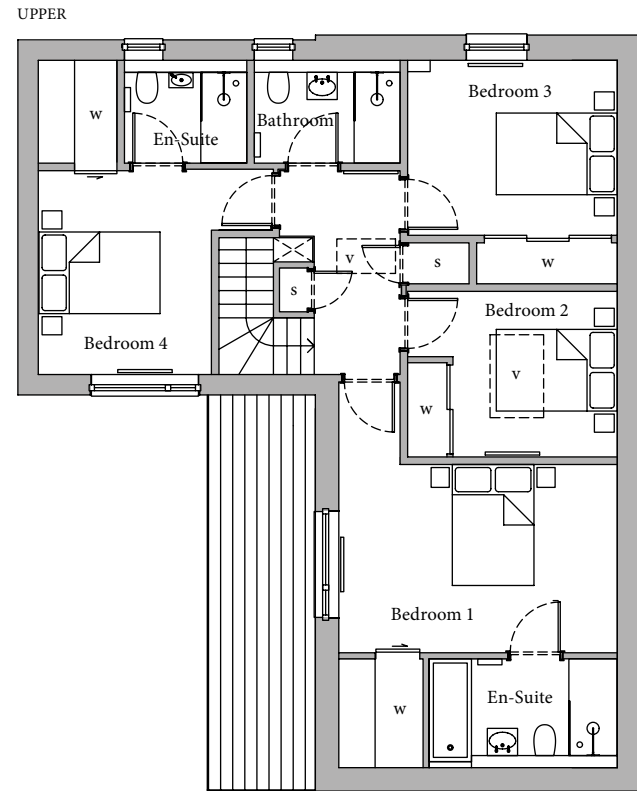
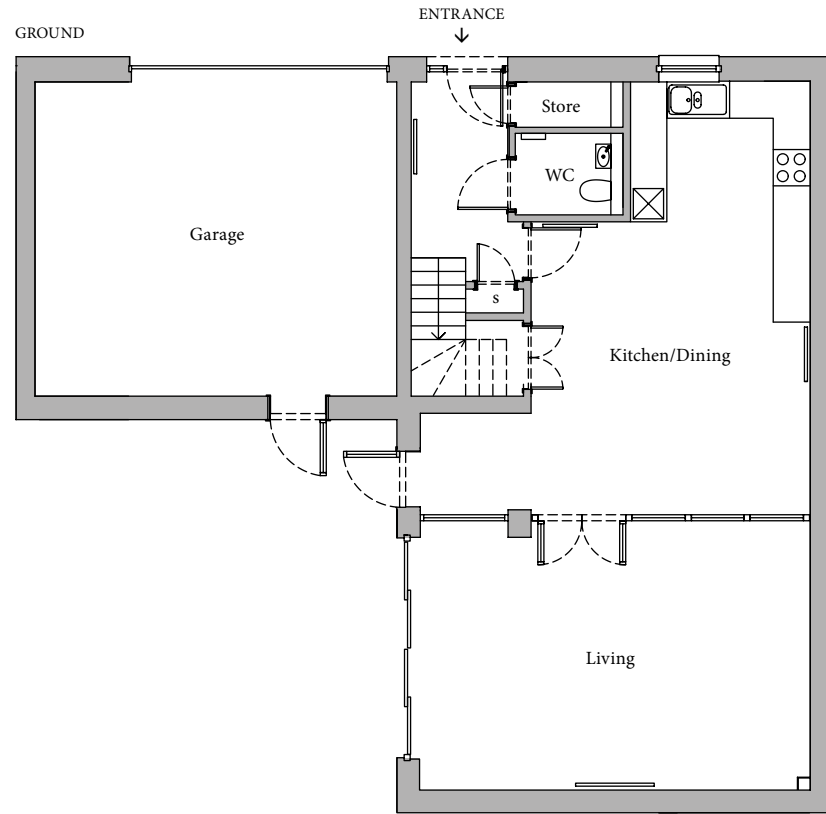


## DALRYMPLE VILLAS - 2

Any areas, measurements or distances referred to are given as a guide only and may not be precise. v = velux window.

GROUND		
Kitchen / Dining	7155 x 4605	23'6" x 15'1"
Living	6615 x 4440	21'8" x 14'7"
W/C	1580 x 1350	5'2" x 4'5"
Garage	5980 x 5195	19'7" x 17'1"

UPPER		
Bedroom 1	3310 x 4605	10'2" x 15'1"
En-suite	3110 x 1600	10'8" x 5'3"
Bedroom 2	3480 x 2735	11'5" x 8'11"
Bedroom 3	3480 x 2860	11'5" x 9'5"
Bedroom 4	3370 x 2860	11'1" x 9'5"
En-suite	2020 x 1600	6'8" x 5'3"
Bathroom	2410 x 1600	7'11" x 5'3"

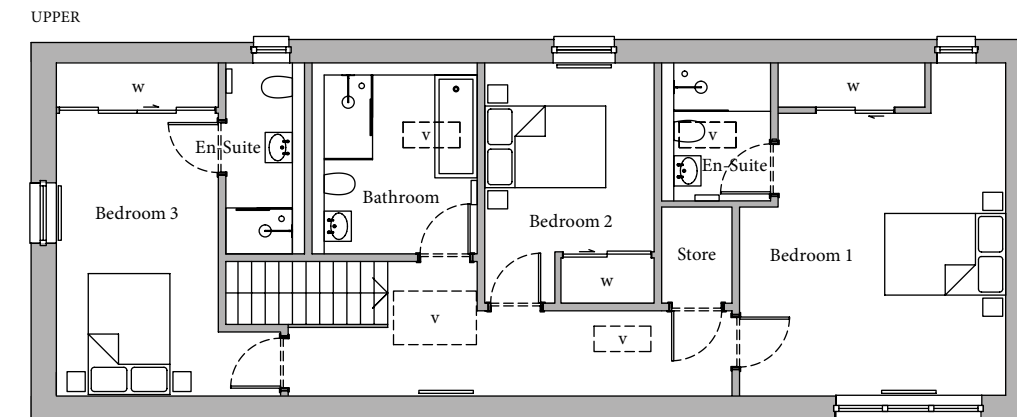
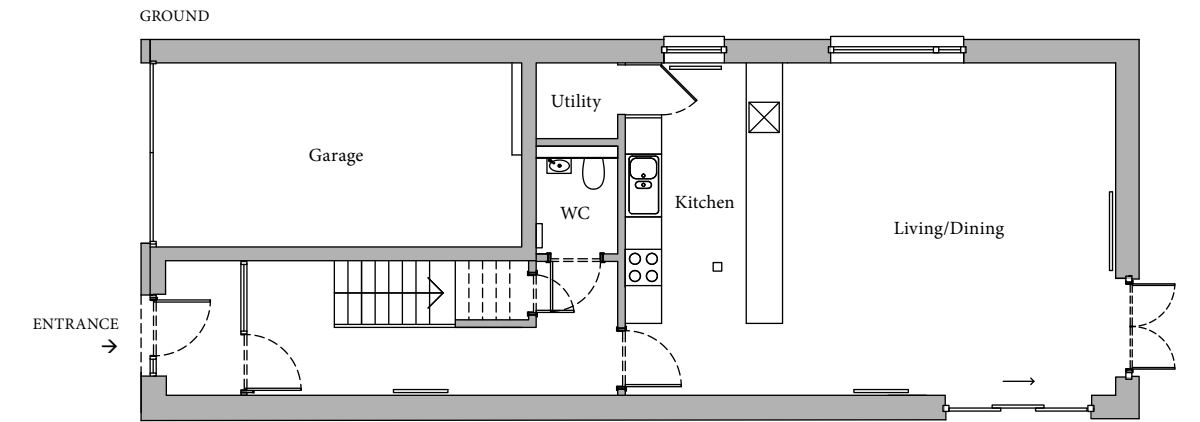


## DALRYMPLE VILLAS - 3

Any areas, measurements or distances referred to are given as a guide only and may not be precise. v = velux window.

GROUND		
Living / Dining	5495 x 5505	18'02" x 18'06"
Kitchen	5495 x 2600	18'0" x 8'6"
W/C	1580 x 1350	5'2" x 4'5"
Garage	6095 x 3045	20'0" x 9'11"
Utility	1350 x 1250	4'4" x 4'1"

UPPER		
Bedroom 1	5495 x 4400	18'0" x 14'5"
En-suite	2280 x 1600	7'6" x 5'3"
Bedroom 2	3110 x 2800	10'2" x 9'2"
Bedroom 3	4660 x 2680	15'3" x 8'10"
En-suite	3185 x 1100	10'5" x 3'7"
Bathroom	2960 x 2530	9'9" x 8'4"





## DALRYMPLE VILLAS - 4



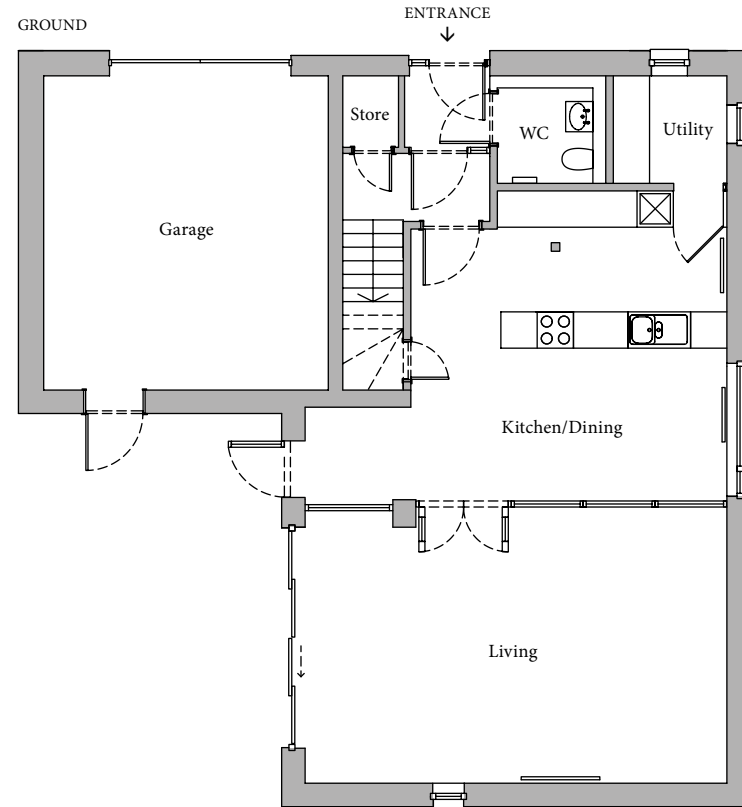
Any areas, measurements or distances referred to are given as a guide only and may not be precise. v = velux window.

### GROUND

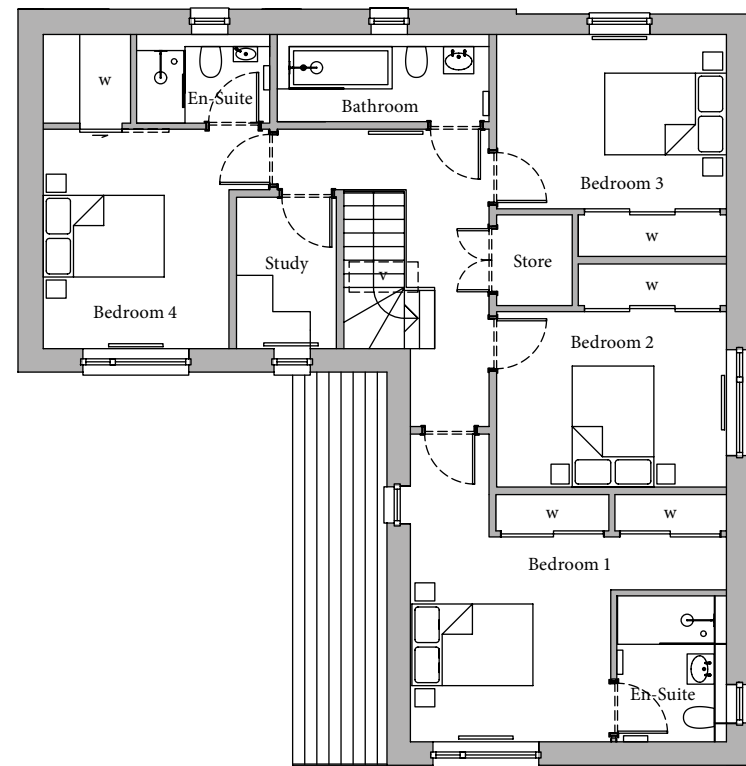
Living	7140 x 4505	23'5" x 14'9"
Kitchen / Dining	5195 x 5190	17'1" x 17'0"
W/C	1610 x 1575	5'3" x 5'2"
Utility	1800 x 1775	5'11" x 5'10"
Garage	5195 x 4705	17'1" x 15'5"

### UPPER

Bedroom 1	5225 x 3390	17'2" x 11'1"
En-suite	2145 x 1680	7'0" x 5'6"
Bedroom 2	3800 x 2900	12'6" x 9'6"
Bedroom 3	3810 x 2880	12'6" x 9'5"
Bedroom 4	3630 x 3070	11'11" x 10'1"
En-suite	2200 x 1495	7'3" x 4'11"
Study	2505 x 1650	8'3" x 5'5"
Bathroom	3500 x 1495	11'6" x 4'11"



### UPPER



## DALRYMPLE VILLAS - 5

Any areas, measurements or distances referred to are given as a guide only and may not be precise.

### GROUND

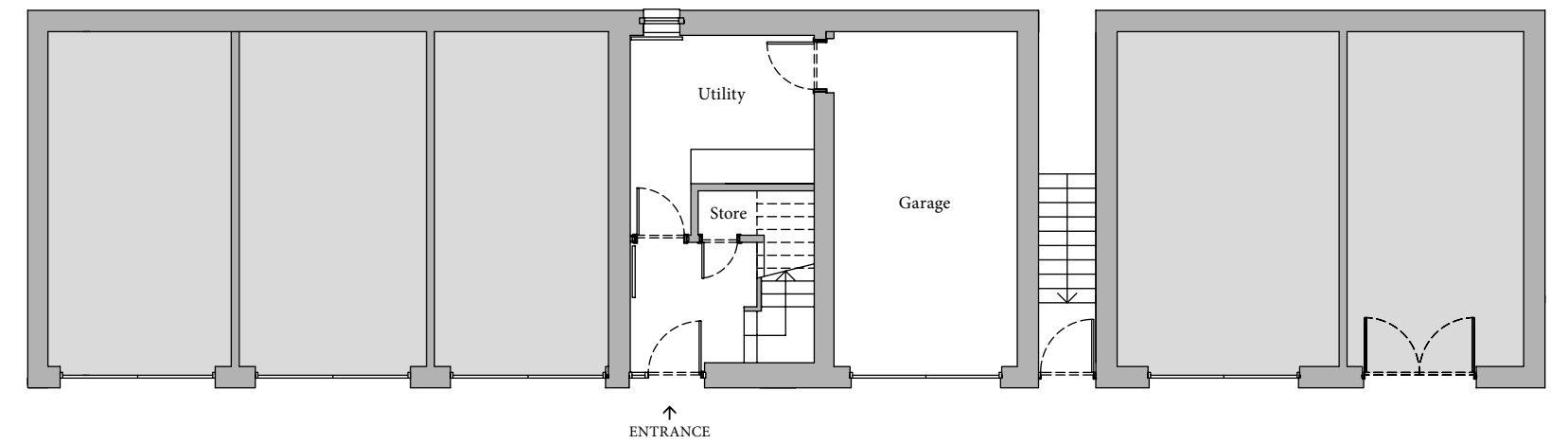
Utility	3215 x 2590	10'7" x 8'6"
Garage	6000 x 3195	19'8" x 10'6"

### UPPER

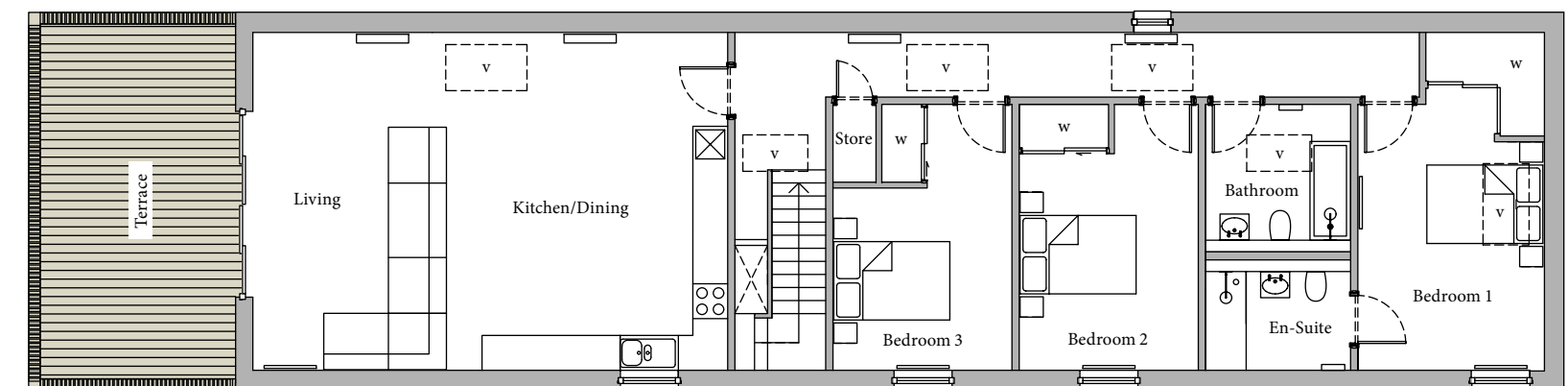
Kitchen / Dining	5715 x 4500	18'9" x 14'9"
Living	5715 x 3085	18'9" x 10'1"
Bedroom 1	4855 x 3205	15'11" x 10'6"
En-suite	2500 x 1700	8'2" x 5'7"
Bedroom 2	4580 x 3085	15'0" x 10'1"
Bedroom 3	4580 x 3040	15'0" x 9'11"
Bathroom	2500 x 2340	8'2" x 7'8"



### GROUND



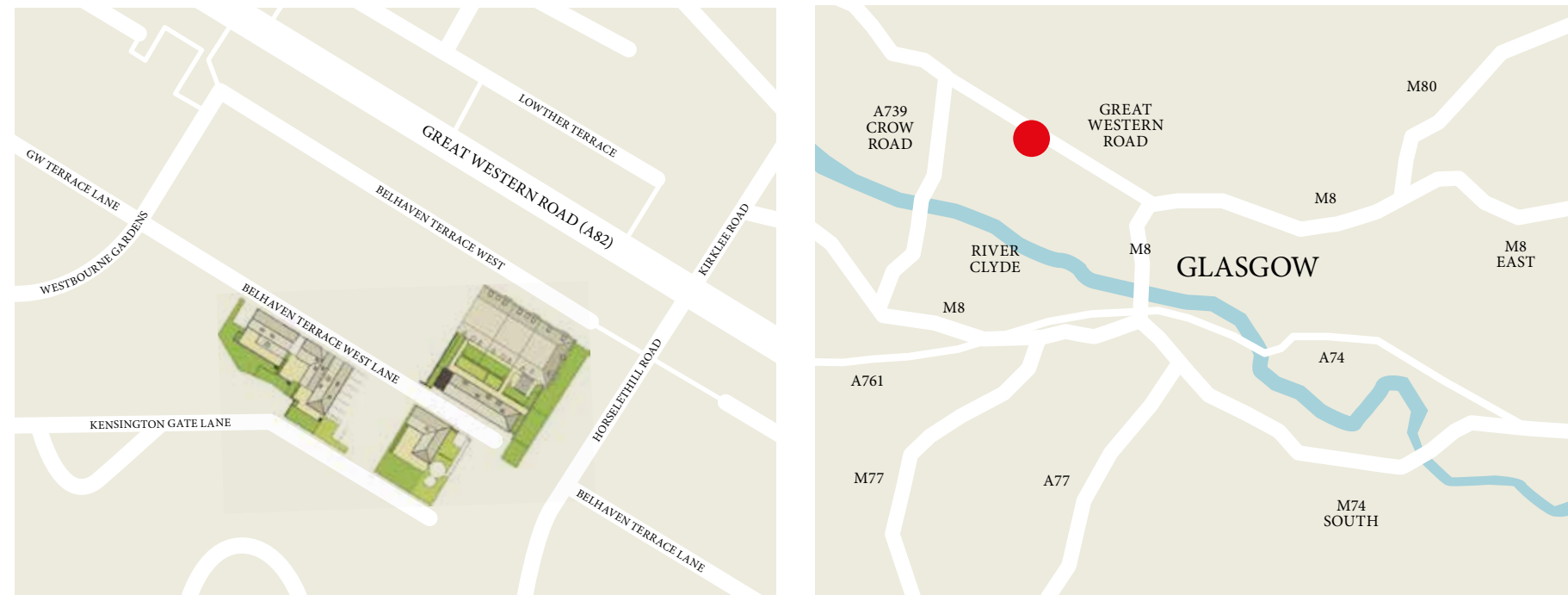
### UPPER





WITH ALL OF THIS RIGHT ON YOUR DOORSTEP, LIFE AT DALRYMPLE MAKES EVERYDAY CITY LIVING EFFORTLESS...

- 1 - BOTANIC GARDENS
- 2 - ASHTON LANE
- 3 - BYRES ROAD
- 4 - KELVINGROVE MUSEUM & ART GALLERY
- 5 - KELVINGROVE PARK
- 6 - GLASGOW UNIVERSITY
- 7 - ORAN MOR
- 8 - COTTIERS THEATRE
- 9 - CORUM OFFICES
- 10 - HILLHEAD SPORTS CLUB
- 11 - CAFE PARMA
- 12 - ONE DEVONSHIRE GARDENS



The L&S Homes team have built an enviable reputation for crafting elegant living spaces whilst respecting the grace and history of some of Glasgow's finest historic buildings. Imaginative design, the use of high quality materials and skilled craftsmen coupled with many years experience and a great passion for restoration, ensures every L&S Homes build or conversion is a sought after property.

*Our previous developments include:*

- Kirklee Mansions - West End
- Kirklee Modern Apartments - West End
- Dowanside Apartments - Dowanhill Collection
- The Rectory - Dowanhill Collection
- Bowmont Gardens - Dowanhill Collection
- Dowanside House - Dowanhill Collection
- Victoria Apartments - Dowanhill Collection
- Space Apartments - Glasgow Green
- The Library - Merchant City
- Virginia Galleries - Merchant City
- St Nicholas Chambers - Newcastle
- Kinness Brook - St Andrews
- 1 Belhaven Terrace - West End
- Lilybank Terrace - West End

**IMPORTANT NOTICE**

The vendors or lessors of this property whose agents they are given notice that: (i) These particulars have been prepared in good faith to give a fair overall view of the development, do not form any part of an offer or contract to the purchaser or any third party, and must not be relied upon as statements or representations of fact. (ii) Purchasers must rely on their own enquiries by inspection or otherwise on all matters including planning or other consents. (iii) The information in these particulars is given without responsibility on the part of the selling agents or their clients. Neither the selling agents nor their employees have any authority to make or give any representations or warranties whatever in relation to this property. (iv) Any areas, measurements or distances referred to are given as a guide only and are not precise. Photographs and computer generated imagery are not necessarily comprehensive nor current; no assumption should be made that any contents shown are included in the sale nor with regards to parts of the property which have not been photographed. (v) The selling agents have not tested any services or equipment and nothing in these particulars should be deemed to be a statement that they are in good working order nor that the property is in good structural condition.



#### HISTORY

Belhaven Terrace West was designed by the architect James Thomson (1835-1905) and built in the early 1870s. Glasgow University acquired five of the houses at the west end of the terrace and employed the architect WRN Ramsay to convert them to a hall of residence. Dalrymple Hall opened to students in October 1965. The hall was named for one of Scotland's most famous jurists, James Dalrymple (1619-1695), 1st Viscount Stair. Stair was a graduate of the University (1637) and taught there from 1641 to 1647.

Dalrymple Collection  
17-19 Belhaven Terrace West  
Glasgow G12 0UL

*[dalrymplecollection.co.uk](http://dalrymplecollection.co.uk)*  
*[info@landsomes.co.uk](mailto:info@landsomes.co.uk)*

