



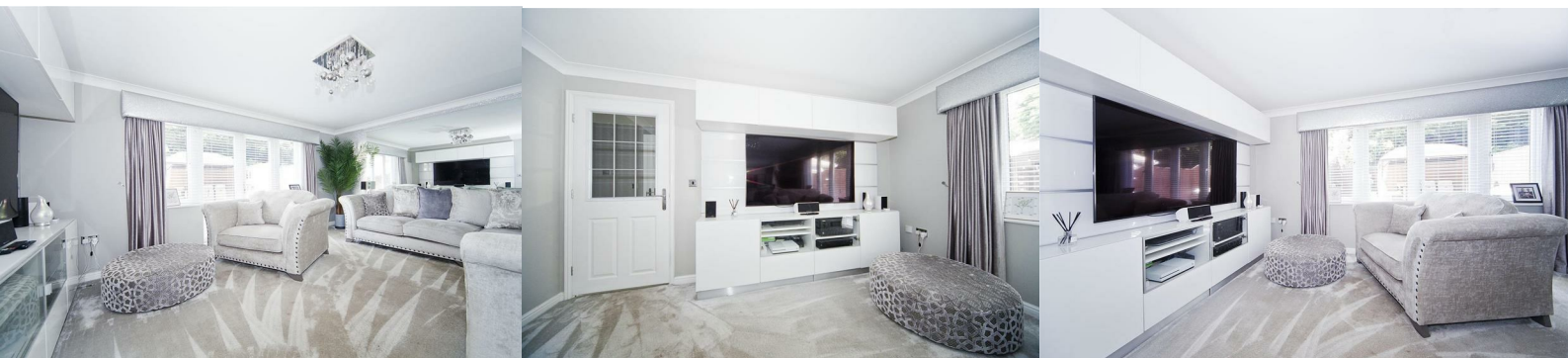
69 Meadowgate Drive

, Hartlepool, TS26 0RH

£310,000



Igomove are proud to present this absolutely fabulous five bedroom detached house in a delightful location, this stunningly beautiful abode delivers a host of key desirable attributes such as; four sizable bedrooms plus study/ fifth bedroom/ dressing room, (master and bedroom two benefit from en suite facilities), stylish lounge, superb dining room, home office, guest cloakroom, excellent kitchen, useful utility room, entrance hall, impressive gardens (rear is South West facing), three vehicle driveway, home bar, uPVC double glazing, gas central heating, fitted blinds, impeccable decor throughout, freehold.



Immaculate front elevation, landscaped garden with established hedging, three car driveway, front door into;

Inviting entrance hall with turned stairs to the first floor, beautifully presented with decorative coving and feature mirrors, laminate flooring.

Spacious dining room with bow window to the front elevation, (formerly the garage) stylishly appointed with feature recessed ceiling, spotlights, media wall with tiling, fitted storage cupboard, tiled floor and with access to;

Useful utility room and fitted storage cupboard, plumbing for washing machine and ample space to perform laundry duties.

Excellent kitchen with fitted storage cupboard comprising a host of display, wall, base and drawer cabinets, complimentary surfaces, tiled backsplash, integrated double oven, integrated gas hob, integrated extractor, integrated fridge freezer, ceramic sink with chrome mixer tap, breakfast bar, tiled floor, recessed spotlights, half glazed rear access door.

Guest cloakroom which comprises close coupled WC and pedestal wash basin, complimentary tiled backsplash, immaculate decor.

Home office with French doors opening to the rear garden, tasteful decor, decorative coving.

Splendid lounge benefitting from French doors opening to the rear garden, impeccably presented with decorative coving, stylish decor.

To the first floor landing there is a fitted storage cupboard and access to;

Master double bedroom located to the front of the property with recessed ceiling, spotlights and mood lighting, fitted wardrobes and fabulous decor, access to;

En suite shower room comprising oversized shower enclosure, concealed cistern WC and wash basin chrome heated towel radiator, impressive tiling.

Bedroom two is a good-sized double located to the rear, superb decor, benefitting from;

En suite shower room which comprises shower enclosure, hidden cistern WC and wash basin, chrome heated towel radiator, delightful tiling.

Bedroom three is of double proportions with rear aspect views and walk in closet.

Bedroom four is a spacious double situated to the front of the property, immaculate decor.

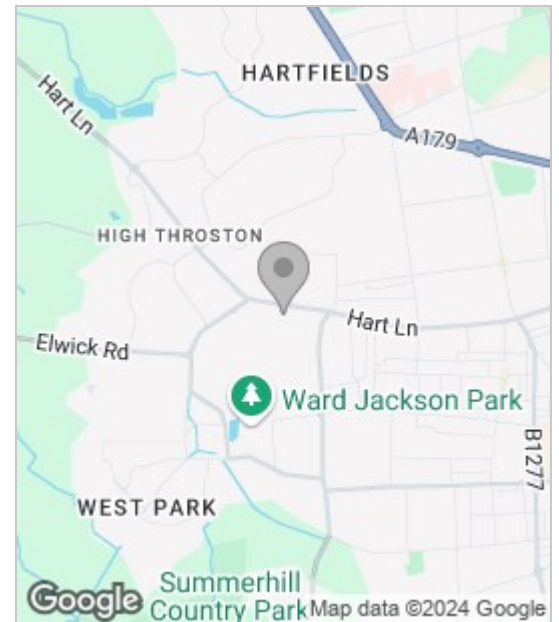
Bedroom five is of large single proportions (could be utilised as a study or dressing room).

The stylish family bathroom comprises bath, close coupled WC and pedestal wash basin, recessed spotlights, superb tiling.

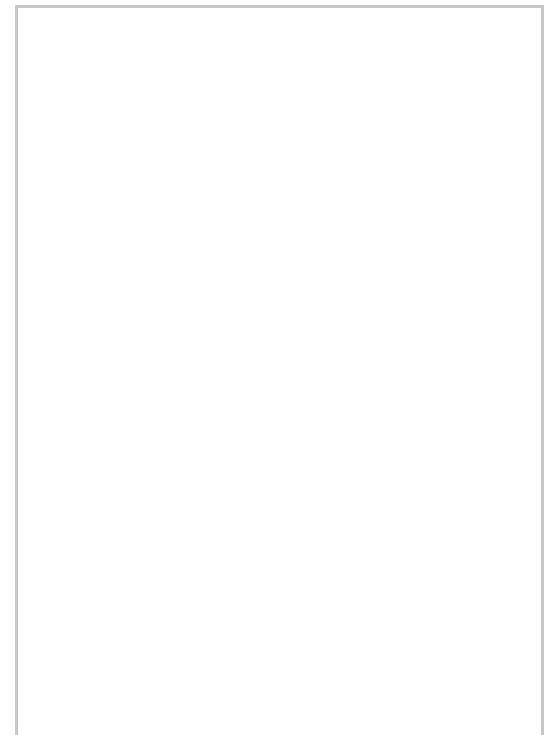
To the rear is an enclosed South Westerly aspect garden with superb fully equipped bar and sunken hot tub, large decking area, a fabulous entertaining space to enjoy time with friends and family.

Stunning in every respect, this spacious family abode is not to be missed!, contact the team at Igomove today to arrange your appointment to view.

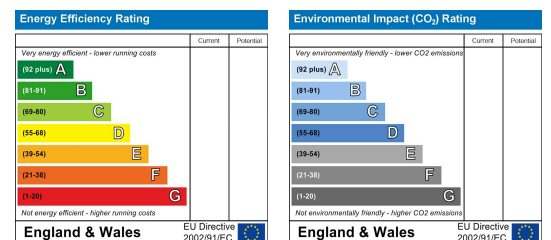
Area Map



Floor Plan



Energy Efficiency Graph



These particulars, whilst believed to be accurate are set out as a general outline only for guidance and do not constitute any part of an offer or contract. Intending purchasers should not rely on them as statements of representation of fact, but must satisfy themselves by inspection or otherwise as to their accuracy. No person in this firm's employment has the authority to make or give any representation or warranty in respect of the property.