



12 The Crescent

, Peterlee, SR8 3NE

£89,999

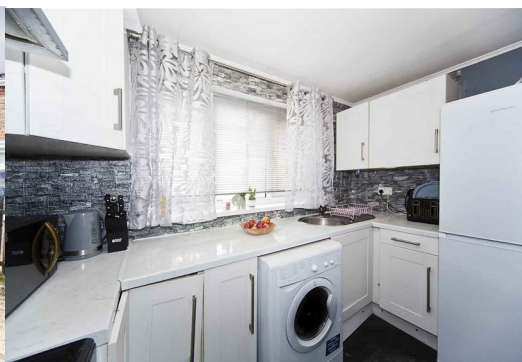


Nestled in the charming area of The Crescent, Easington, this delightful three-bedroom terraced house presents an excellent opportunity for first-time buyers or those seeking a rental investment. The property boasts two spacious reception rooms, providing ample space for relaxation and entertaining guests.

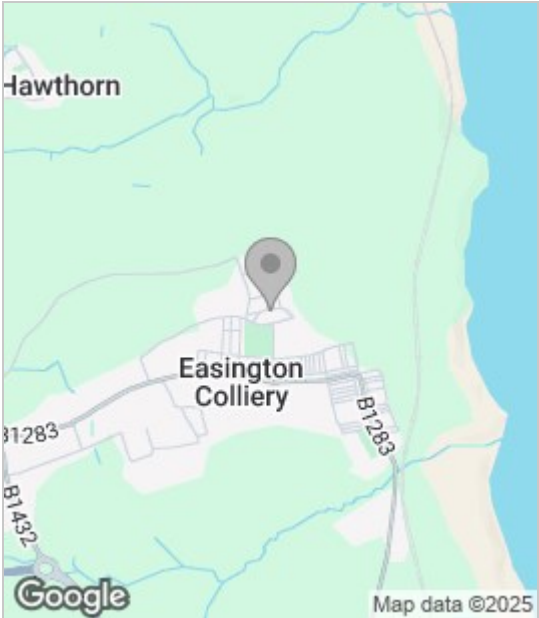
The well-appointed kitchen in addition to a large garden, which not only offers a serene outdoor space but also features pleasant views, perfect for enjoying sunny afternoons or hosting family gatherings. The house includes two bathrooms (master bedroom en-suit), ensuring convenience for families or guests alike.

Additionally, the property benefits from a garage and a driveway, providing secure parking and extra storage space. Its prime location is a significant advantage, as it is situated close to local schools, making it ideal for families, as well as convenient commuting routes for those who travel for work. Nature enthusiasts will also appreciate the nearby nature walks, offering a perfect escape into the great outdoors.

This terraced house is a wonderful blend of comfort, practicality, and location, making it a must-see for anyone looking to settle in this vibrant community.



Area Map



Floor Plan



Energy Efficiency Graph



These particulars, whilst believed to be accurate are set out as a general outline only for guidance and do not constitute any part of an offer or contract. Intending purchasers should not rely on them as statements of representation of fact, but must satisfy themselves by inspection or otherwise as to their accuracy. No person in this firms employment has the authority to make or give any representation or warranty in respect of the property.