

14 Morpeth Street

, Horden, SR8 4BB

£109,995

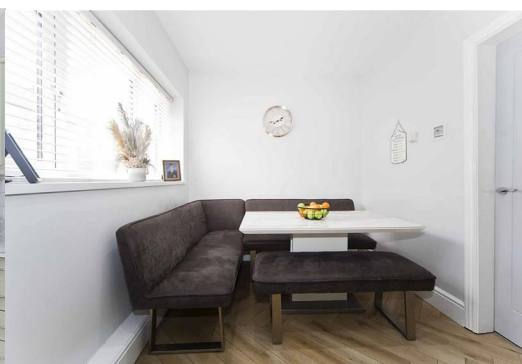


Situated on Morpeth Street in Horden, Peterlee this charming mid-terrace house offers a delightful blend of modern living and classic appeal. Built in 1930, the property has been fully renovated to provide a fresh and inviting atmosphere, making it an ideal choice for first-time buyers.

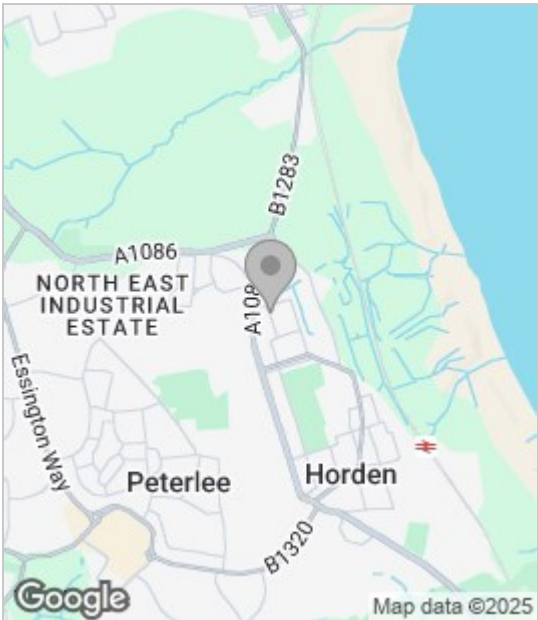
Spanning an impressive 1,184 square feet, the home features a spacious reception room that welcomes you with warmth and character. The property boasts three well-proportioned bedrooms, perfect for families or those seeking extra space for guests or a home office. The modern bathroom and kitchen have been thoughtfully designed, ensuring both style and functionality for everyday living.

One of the standout features of this property is the large garden, which includes a bar area, perfect for entertaining friends and family during the warmer months. The outdoor space offers a wonderful retreat, allowing you to enjoy the fresh air and sunshine right at home.

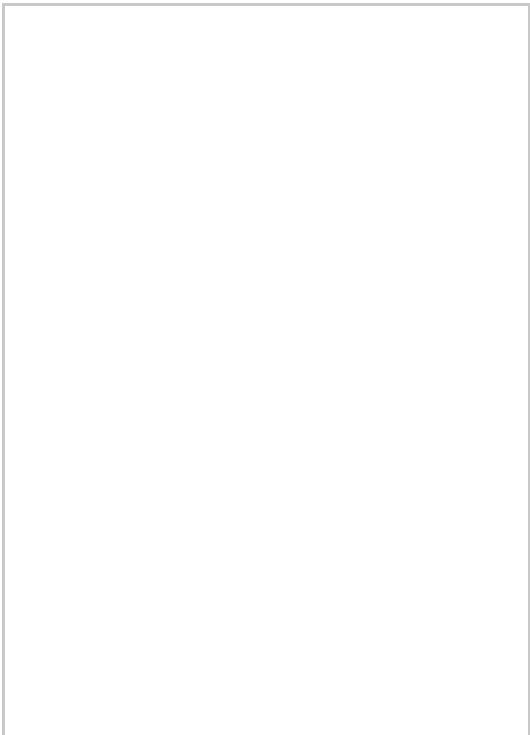
Conveniently located in Horden, Peterlee, this residence is just a stone's throw away from the beach and the local train station, providing easy access to nearby amenities and transport links. Whether you are looking to enjoy



Area Map



Floor Plan



Energy Efficiency Graph



These particulars, whilst believed to be accurate are set out as a general outline only for guidance and do not constitute any part of an offer or contract. Intending purchasers should not rely on them as statements of representation of fact, but must satisfy themselves by inspection or otherwise as to their accuracy. No person in this firms employment has the authority to make or give any representation or warranty in respect of the property.