



4 Mappleton Drive

, Seaham, SR7 7DY

£129,999

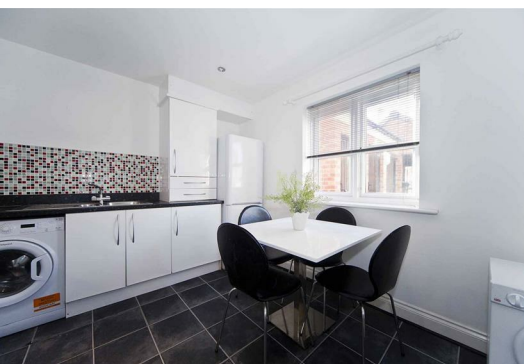


Welcome to this stunning ground floor apartment located on the desirable Mappleton Drive in Seaham. This charming property boasts two well-proportioned bedrooms and two modern bathrooms, making it an ideal choice for both investors and first-time buyers alike.

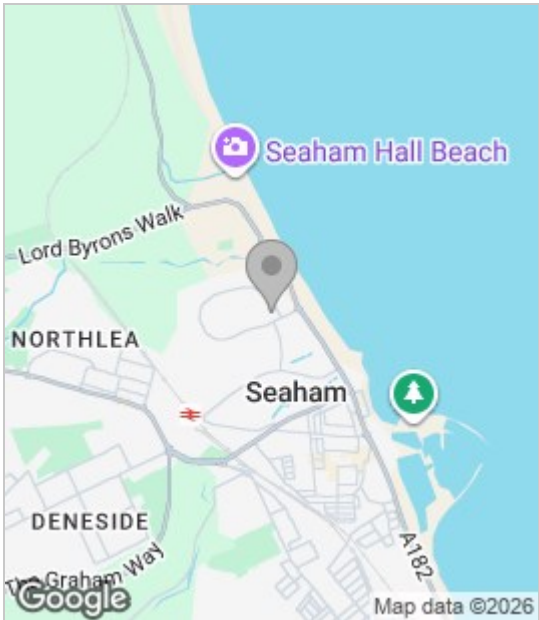
As you enter the apartment, you will be greeted by a spacious reception room that offers a warm and inviting atmosphere, perfect for relaxing or entertaining guests. The self-contained nature of the apartment ensures privacy and comfort, while the well-designed layout maximises the use of space.

One of the standout features of this property is its proximity to the sea, allowing residents to enjoy the beautiful coastal scenery and the refreshing sea breeze. Additionally, the apartment comes with a dedicated parking space for one vehicle, providing convenience in this sought-after location.

Whether you are looking to invest in a rental property or seeking your first home, this apartment presents an excellent opportunity. With its appealing features and prime location, it is sure to attract interest. Do not miss the



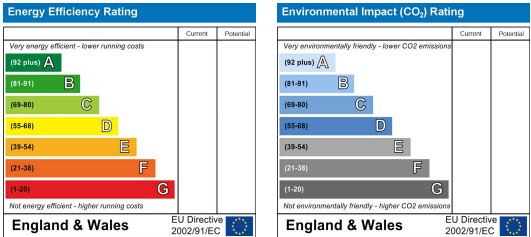
Area Map



Floor Plan



Energy Efficiency Graph



These particulars, whilst believed to be accurate are set out as a general outline only for guidance and do not constitute any part of an offer or contract. Intending purchasers should not rely on them as statements of representation of fact, but must satisfy themselves by inspection or otherwise as to their accuracy. No person in this firm's employment has the authority to make or give any representation or warranty in respect of the property.