



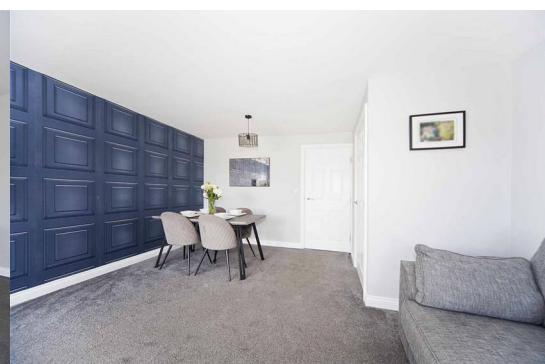
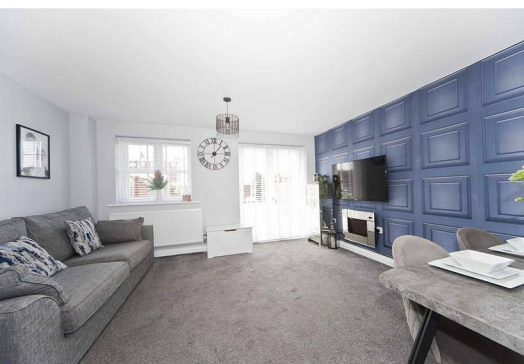
## 15 Sidings Close

, Hartlepool, TS24 7AQ

**£170,000**



Igomove are pleased to present to the market this contemporary three bedroomed end townhouse situated on a modern development, this well planned property offers several key desirable features which include; three bedrooms ( master with en suite facilities and dressing room), immaculate family bathroom, spacious lounge/diner, well presented shaker style kitchen, guest cloakroom, garage, two car driveway, South West facing rear garden, Upvc triple glazing, gas central heating with separate floor controls, solar panels (owned outright) with a return of approx £200 pa, fitted blinds, stylish decor, freehold.



Well presented home with lawned garden with wrought iron railings, double block paved driveway to garage, front door with canopy over into;

Entrance hallway with turned stairs to the first floor accommodation, excellent decor.

Guest cloakroom which comprises close coupled WC and pedestal wash basin, bespoke wall panelling.

Well equipped kitchen fitted with an array of shaker style wall, base and drawer cabinets, complimentary solid surfaces, stylish subway tiled backsplash, integrated oven, integrated gas hob, integrated extractor, integrated dishwasher, plumbing for washing machine, space for fridge freezer, stainless sink with chrome mixer tap, recessed spotlights.

Spacious lounge/diner with both window and French doors opening to the rear garden, fitted storage cupboard, stylish decor, wall mounted contemporary electric fire.

To the first floor;

Bedroom two is a large double with twin front elevation windows, fitted wardrobes, immaculate decor.

Bedroom three is another spacious double with dual rear aspect windows, beautiful pastel decor.

The family bathroom comprises bath, close coupled WC and pedestal wash basin, heated towel rail, half tiled walls.

To the second floor landing there is a fitted storage cupboard.

Master double bedroom suite which comprises large bedroom with tasteful decor and loft access which leads into;

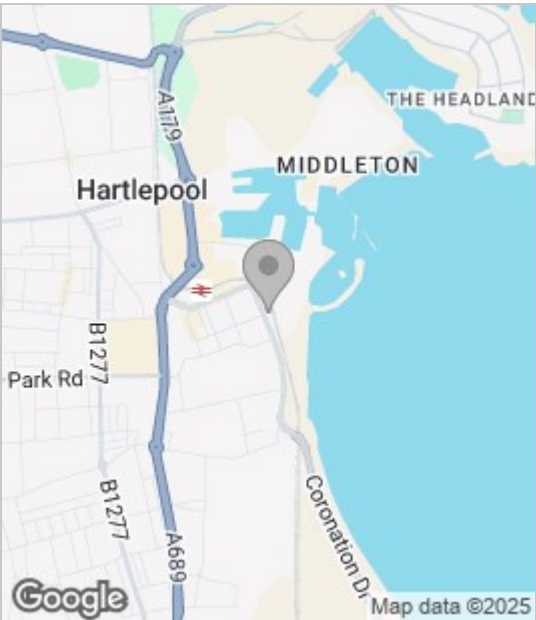
Walk in dressing room, with built in wardrobes and cabinetry, Velux window leading into;

En suite shower room comprising; shower enclosure, pedestal wash basin and close coupled WC, complimentary tiling, Velux window.

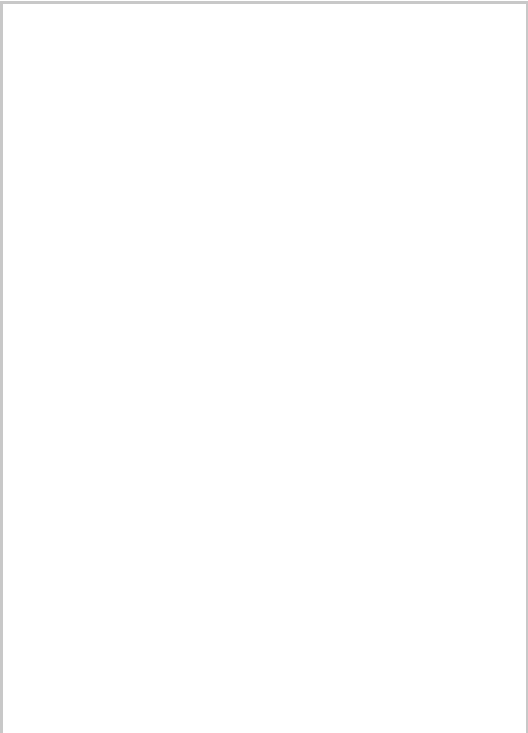
To the rear is an enclosed South West facing garden, well stocked with patio and BBQ area, not directly overlooked.

With superb sea views, this contemporary home is presented to the highest of standards and the Igomove team urge early viewing to secure this delightful property.

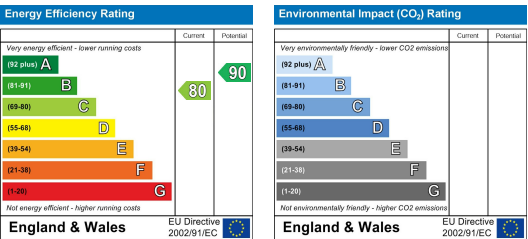
Area Map



Floor Plan



Energy Efficiency Graph



These particulars, whilst believed to be accurate are set out as a general outline only for guidance and do not constitute any part of an offer or contract. Intending purchasers should not rely on them as statements of representation of fact, but must satisfy themselves by inspection or otherwise as to their accuracy. No person in this firm's employment has the authority to make or give any representation or warranty in respect of the property.