




33 Reedston Road , Hartlepool, TS26 0PZ


Nestled in the desirable Elwick Gardens area of Hartlepool, this nearly new luxury detached house on Reedston Road offers an exceptional living experience.


Built in 2023, this stunning property spans an impressive 1,733 square feet, providing ample space for families or those who enjoy entertaining.


Offers Over £347,500

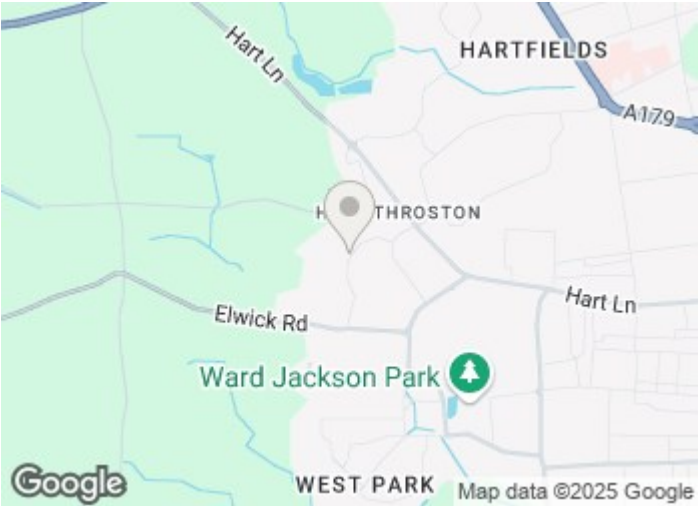
33 Reedston Road
, Hartlepool, TS26 0PZ

 4

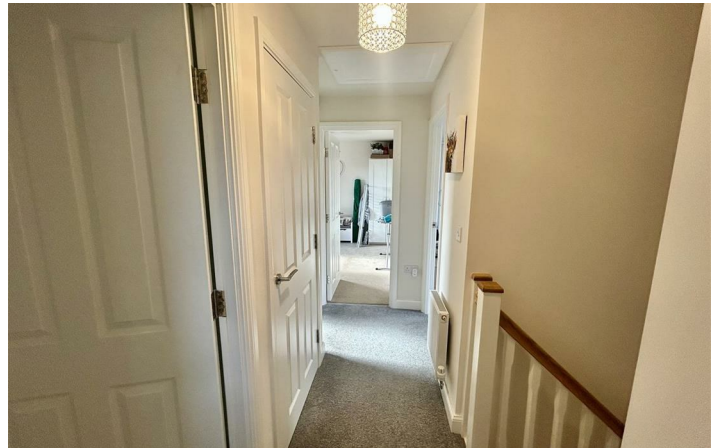
 2

 2

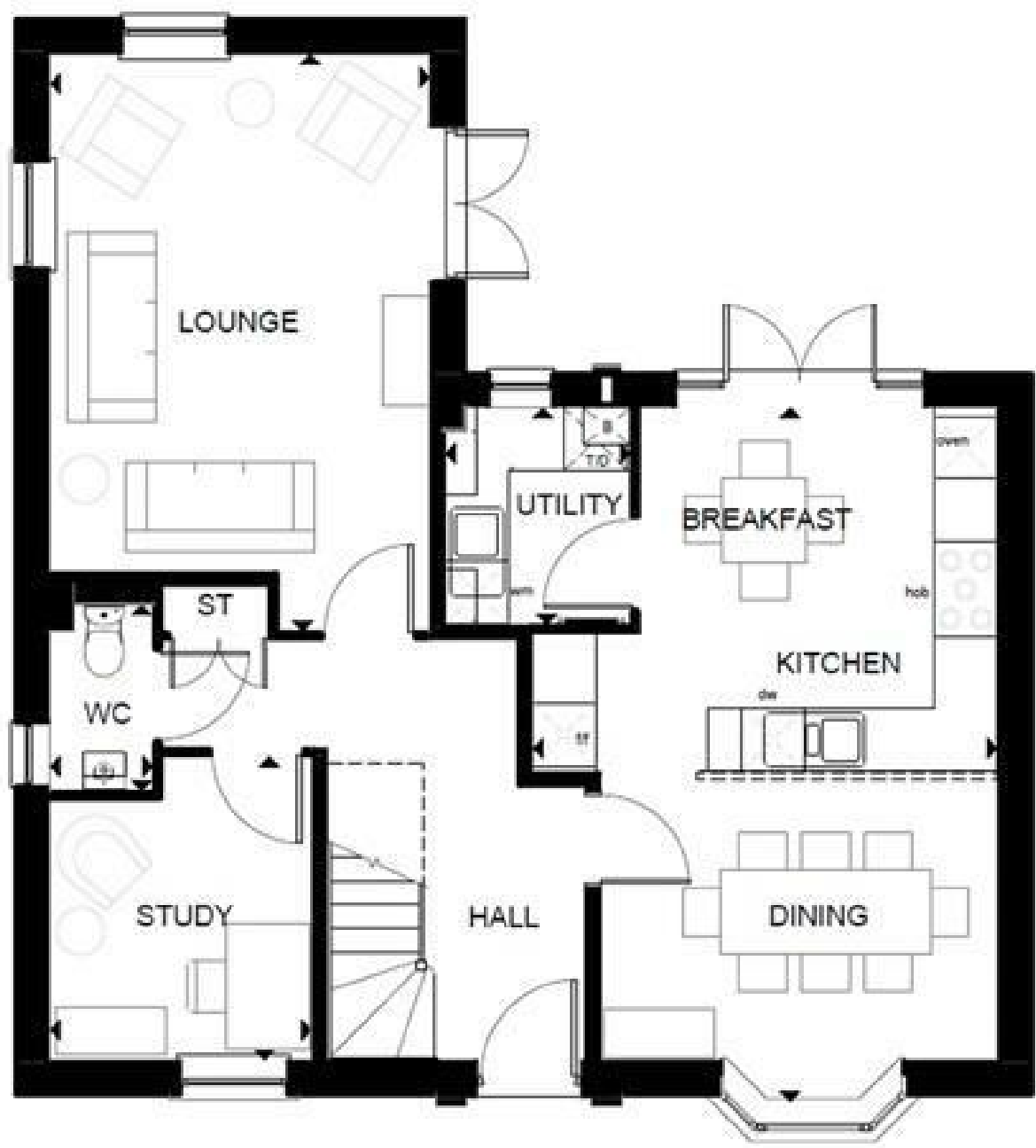
 B



[Directions](#)



Floor Plan



These particulars, whilst believed to be accurate are set out as a general outline only for guidance and do not constitute any part of an offer or contract. Intending purchasers should not rely on them as statements of representation of fact, but must satisfy themselves by inspection or otherwise as to their accuracy. No person in this firms employment has the authority to make or give any representation or warranty in respect of the property.

