



11 Lansdowne Road

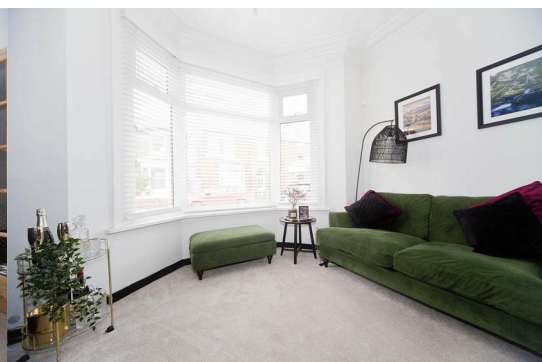
, Hartlepool, TS26 9JL

£125,000



Beautifully Extended 3 Bed Mid Terrace | Easy Access To Town Centre | Spacious Hallway | Bay Fronted Lounge | Dining Room | Guest WC | Kitchen Diner | Courtyard Garden | uPVC DG | GCH | On Street Parking | Freehold

Igomove take pleasure in bringing to the market this absolutely stunning two bed roomed house with loft conversion in a popular and central residential area, it offers several desirable features which include; two large double bedrooms plus huge loft conversion, stylish recently fitted bathroom, good size lounge, separate dining room, spacious kitchen diner, guest WC, uPVC double glazing, gas central heating via new boiler, fitted blinds, beautiful decor throughout, on street parking, rear courtyard, freehold.



Well presented traditional double bay property, palisade walled garden, front door into;

Vestibule entrance which leads into;

Entrance hall with stairs to the first floor, guest WC, contemporary decor and beautiful tiled flooring.

Excellent lounge with bay window to the front elevation, tasteful decor, deep decorative coving, cast dual fuel fire with wooden over mantle recessed spotlights.

Separate dining room with rear aspect window, stylish decor.

Well equipped kitchen diner, beautifully presented and fitted with a selection of wall, display, base and drawer cabinets, wine rack, complimentary surfaces, space for range cooker, integrated stainless multifunction extractor and matching backsplash, inset sink with chrome mixer tap, space for fridge freezer, plumbing for washing machine, space for dishwasher, ample dining space, stunning flooring, lovely decor, glazed rear access door.

To the first floor;

Bedroom one is a large double with bay window to the front elevation, extensive fitted wardrobes, impeccable decor.

Bedroom two is another rear aspect double, fitted wardrobes, bespoke wall panels, pristine decorative order.

The newly installed family bathroom comprises 'P' shaped bath, over bath shower with contemporary shower screen, close coupled WC and pedestal wash basin, stylish tiling to walls and floor.

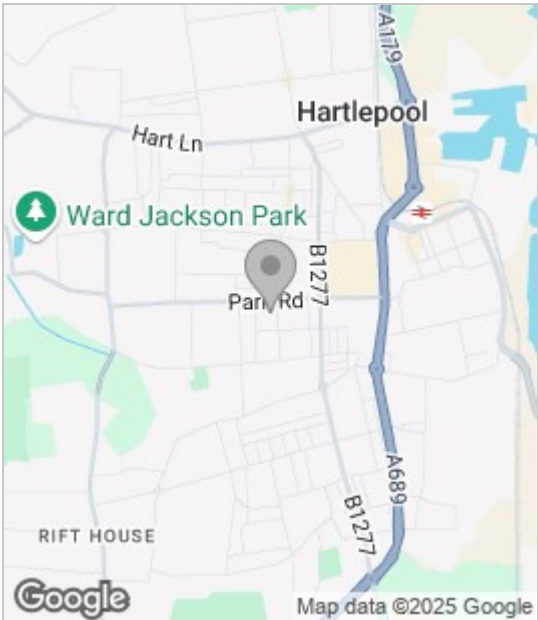
To the second floor;

Huge loft room with dual Velux windows, neutral decor.

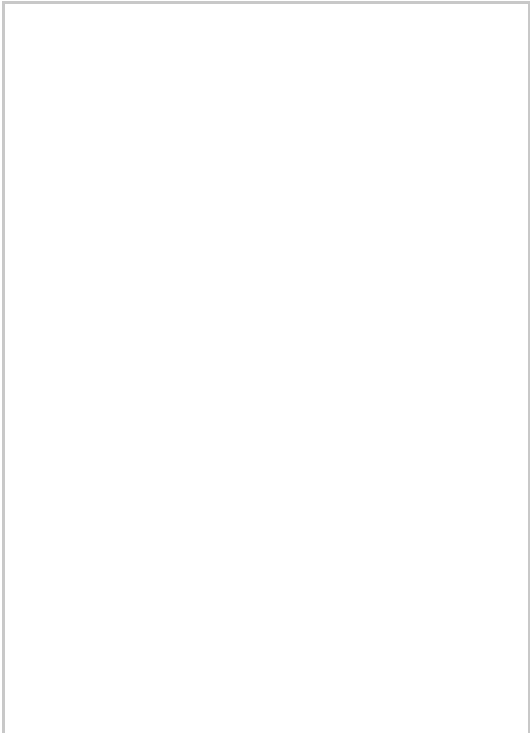
To the rear is an enclosed courtyard garden.

This impeccably presented abode is located in a popular residential area and the Igomove team highly recommend early viewing as this residence is sure to pique interest.

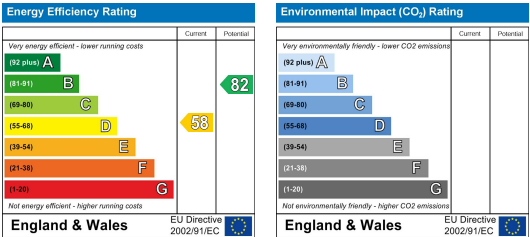
Area Map



Floor Plan



Energy Efficiency Graph



These particulars, whilst believed to be accurate are set out as a general outline only for guidance and do not constitute any part of an offer or contract. Intending purchasers should not rely on them as statements of representation of fact, but must satisfy themselves by inspection or otherwise as to their accuracy. No person in this firm's employment has the authority to make or give any representation or warranty in respect of the property.