



33 Kingfisher Close

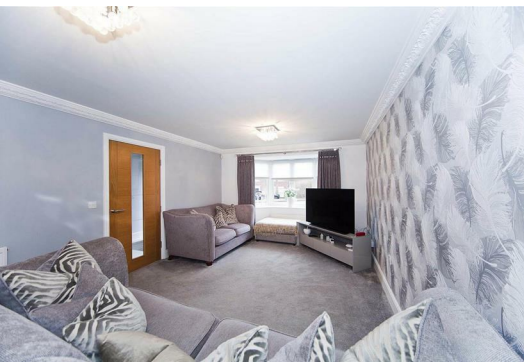
, Hartlepool, TS26 0GA

£479,000



IMPECCABLY APPOINTED ABODE!! STYLISH SIX BED DETACHED

Igomove take great pleasure in presenting this stylish six bedroomed detached house located in a premier address of the Bishop Cuthbert estate, nestled amongst other executive and self build properties, this impeccably appointed abode offers a host of desirable features which include; 6 large double bedrooms (master with en suite plus two other bedrooms with en suite facilities), superb four piece family bathroom, fabulous high gloss kitchen/ diner with a multitude of NEFF integrated appliances, beautiful lounge, excellent family room, delightful dining room, utility room, guest cloakroom, uPVC double glazing and composite front door, gas central heating, under floor heating, tiled floors, impeccable decor, fitted blinds, oak internal doors, landscaping to extensive gardens, Sonos sound system, freehold.



Attractive facade, extensive plot, lawned gardens to front and two sides, double block paved drive to double integral garage, front door into;

Inviting reception hall with bespoke oak and glass stairs to the first floor and under stairs storage cupboard, recessed spotlights, immaculate decor, tiled floor.

Superb lounge with bay window to the front elevation, excellent decor, decorative coving and double doors into;

Delightful dining room with rear elevation window, superb decor, decorative coving.

Stunning open concept kitchen diner fitted with an array of wall, base and drawer sleek high gloss cabinetry, cabinet lighting, complimentary solid granite surfaces, integrated double oven, integrated microwave, integrated gas hob, integrated stainless multifunction extractor, integrated fridge freezer, integrated wine cooler, integrated dishwasher, inset one and a half bowl stainless sink with chrome mixer tap, breakfast bar, recessed spotlights, kickboard lighting, fitted ceiling speakers, tiled floor, open plan to;

Stylish family room with French doors opening to the garden, tiled floor, pristine decor.

Utility room fitted in keeping with the kitchen with plumbing for washing machine, space for tumble dryer, half glazed rear access door.

Guest cloakroom comprising WC and wash basin with complimentary tiled backsplash.

To the first floor landing there is a window allowing for natural light and fitted storage cupboard.

Master double bedroom situated to the front with extensive fitted wardrobes, impressive decor and storage and with access to;

En suite comprising oversized shower enclosure, WC and wash basin, complimentary tiling.

Bedroom two is another double located to the front of the property, excellent decor.

Bedroom three is a rear aspect double with beautiful decor.

Bedroom four is another well proportioned double room immaculately presented.

The large four piece family bathroom comprises bath, shower enclosure, WC and wash basin, chrome heated towel radiator, stylish tiling.

To the second floor;

Bedroom five is a large double with Velux to the rear and window to the front with superb decor and shared access to;

En suite shower room which comprises shower enclosure, WC and wash basin, Velux window.

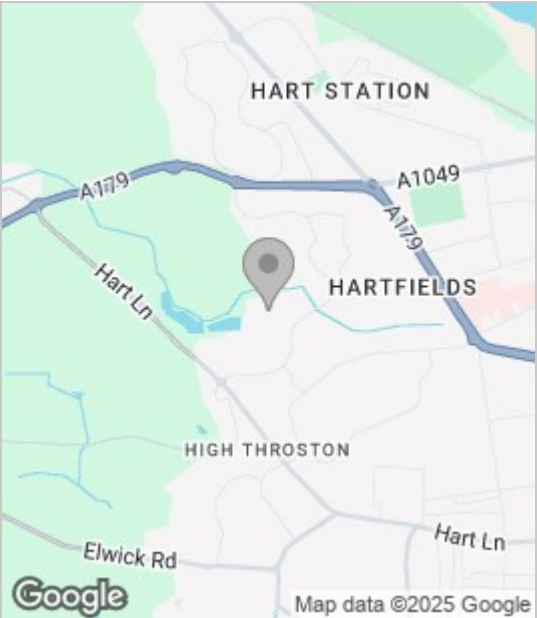
Bedroom six shares en suite facilities with bedroom five and enjoys twin rear aspect Velux windows and side elevation window.

To the rear is a beautifully professionally landscaped garden with stunning patio areas, manicured lawns, raised beds, summer kitchen with BBQ and fridge, pergola. There is background lighting to planted area, lighting in composite decking and understair lighting to raised beds.

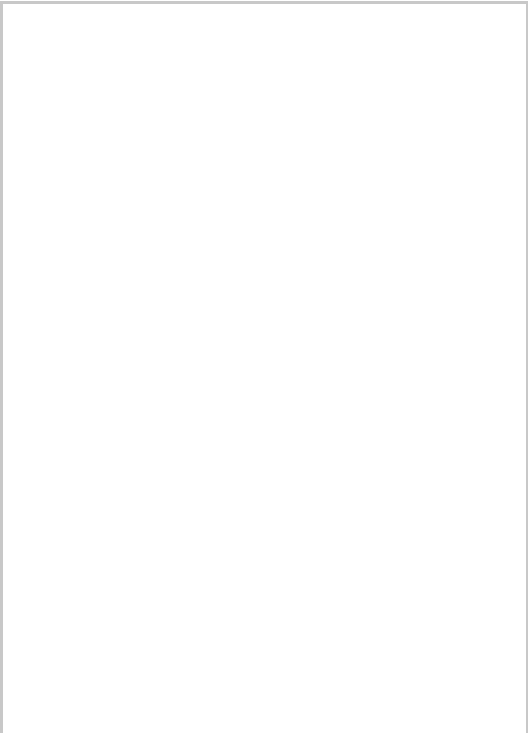
This absolutely stunning property in a highly desirable address is sure to generate a great deal of interest from the discerning prospective purchaser, contact Igomove today to view.

These particulars, whilst believed to be accurate are set out as a general outline only for guidance and do not constitute any part of an offer or contract. Intending purchasers should not rely on them as statements of representation of fact, but must satisfy themselves by inspection or otherwise as to their accuracy. No person in this firms employment has the authority to make or give any representation or warranty in respect of the property.

Area Map



Floor Plan



Energy Efficiency Graph

