

25 Mayfair Gardens

, Hartlepool, TS26 0DT

£620,000



Igomove are delighted to present this impressive 5/6 bedroom, detached family home finished to an exceptionally high standard in the highly desirable area of West Park in Hartlepool. This imposingly contemporary home oozes elegance and luxury, occupies a substantial plot with generous landscaped front and rear lawns, estate fencing and a large private driveway with a detached double garage. West Park is one of the most sought-after postcode areas of Hartlepool, with a delightful country manor feel, mature trees and sense of luxury. The property is within walking distance of Outstanding schools, local park and many local amenities. In brief, this magnificent home comprises of five / six bedrooms, one bathroom, two en-suites, downstairs WC, open plan kitchen/family room, lounge, dining room, leisure room, and utility.



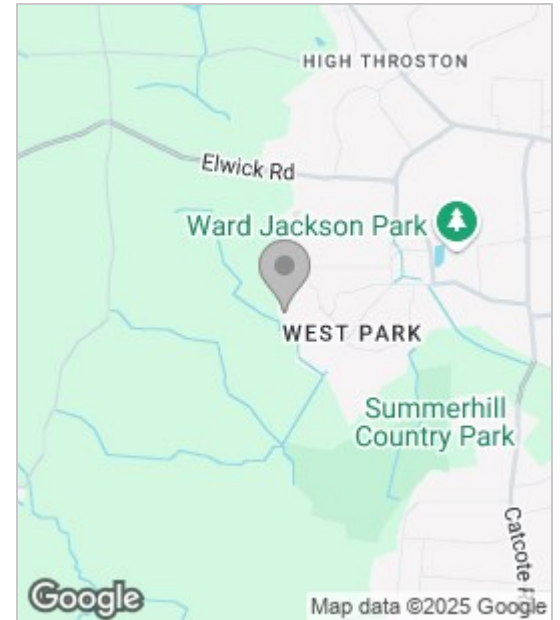
As you enter the property, you are welcomed into a stunning reception hallway which is generously proportioned and flooded with natural light. To the left is a modern dining room currently used as a study. Adjacent lies an impressive formal living room which is a generously proportioned space to relax and unwind. The hallway is complimented by a beautifully finished modern washroom comprising of a low level WC and wash basin. The rear aspect is all open plan and a real statement piece, creating the real hub of the home. As you enter the open plan space, you enter centrally into a large family and dining area featuring bi-folds leading onto the rear patio and landscaped garden. To the left, you are met with the kitchen featuring a multitude of units as well as ample cooking space and a breakfast bar. Appliances are seamlessly integrated, inclusive of a hob, double wall mounted oven and fridge freezer. The kitchen also plays host to the utility room, offering plumbing and access to the side of the property.

The first floor has a large landing which services four bedrooms. The master bedroom is beautifully finished and is complimented with an en-suite comprising of a walk-in double shower, low level WC and his & hers wash basins. The three remaining bedrooms on the floor are all doubles and offer a spacious living area. The family bathroom comprises of a fitted bath, walk-in double shower, low level WC and wash basin.

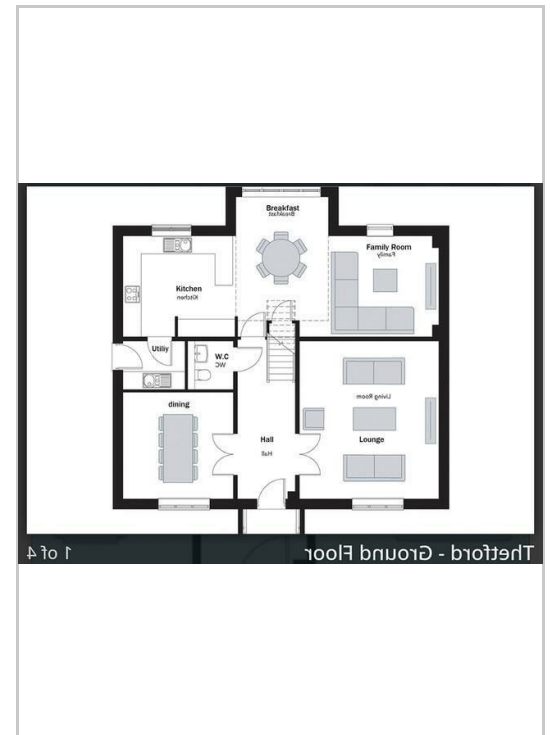
Ascending to the second floor, you are met with the fifth bedroom and leisure room. Both are interconnected by a Jack & Jill bathroom comprising of a walk-in double shower, low level WC and wash basin.

The rear garden is beautifully landscaped with a patio space and large lawn, ideal for enjoying a morning coffee or entertaining family and friends, while taking in the striking views that surround. Make this home your own and book your viewing today. Igomove are open 7 days a week.

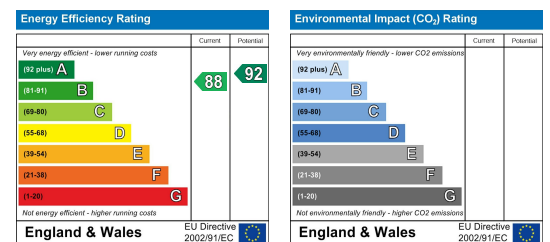
Area Map



Floor Plan



Energy Efficiency Graph



These particulars, whilst believed to be accurate are set out as a general outline only for guidance and do not constitute any part of an offer or contract. Intending purchasers should not rely on them as statements of representation of fact, but must satisfy themselves by inspection or otherwise as to their accuracy. No person in this firm's employment has the authority to make or give any representation or warranty in respect of the property.