

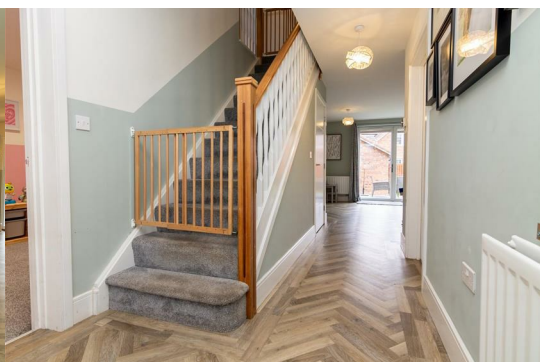


## 16 Plough Crescent , Stockton-On-Tees, TS19 8GZ

**£320,000**



Igomove are delighted to present this impressive 4 bedroom, detached family home, finished to an exceptionally high standard in the highly desirable area of Summerville Village in Stockton-on-Tees. This stunning home is packed with extras but notable features include the kitchen with its bi folding doors into the garden and master suite which features an en-suite shower room/WC and dressing room. Just north of Summerville Quarter is the historic town of Stockton, County Durham, a short drive away, with all of its shopping, pubs, restaurants, cafes, hairdressers, beauticians and banks. Norton High Street, home to popular eateries and shops, is only 6 minutes away. In brief, this impressive home comprises of four bedrooms, one family bathroom, one en-suite, lounge, lengthy reception room, open plan kitchen & dining room, utility and downstairs WC.

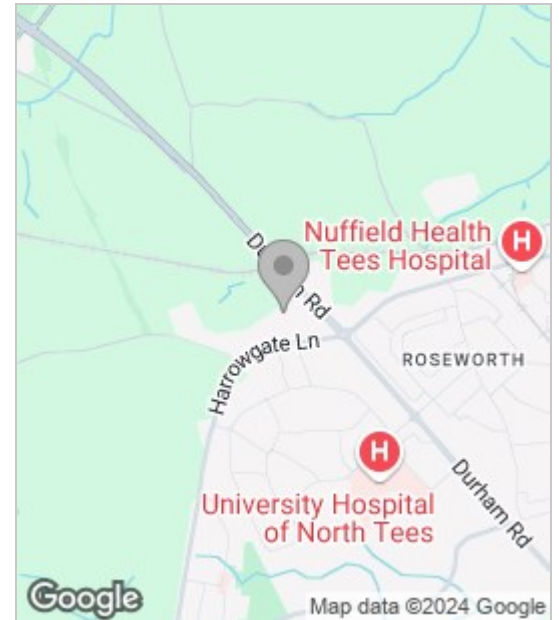


Step into this attractive home and be immediately greeted by a spacious hallway leading through into the spacious open-plan kitchen/dining space. Perfect for everyday family living or home entertaining, the kitchen is a large sociable space that features bi folding doors overlooking the rear garden. The kitchen is well equipped with a range of base and wall units, drawers and work surfaces, together with sink, tap and splash backs. There's also a range of integrated appliances. A separate utility room gives access to the large ground floor WC. To the left of the entrance lies a lengthy reception room currently used as a play area. Completing the downstairs accommodation is the cozy lounge, to front aspect, which is a generously proportioned space to relax and unwind.

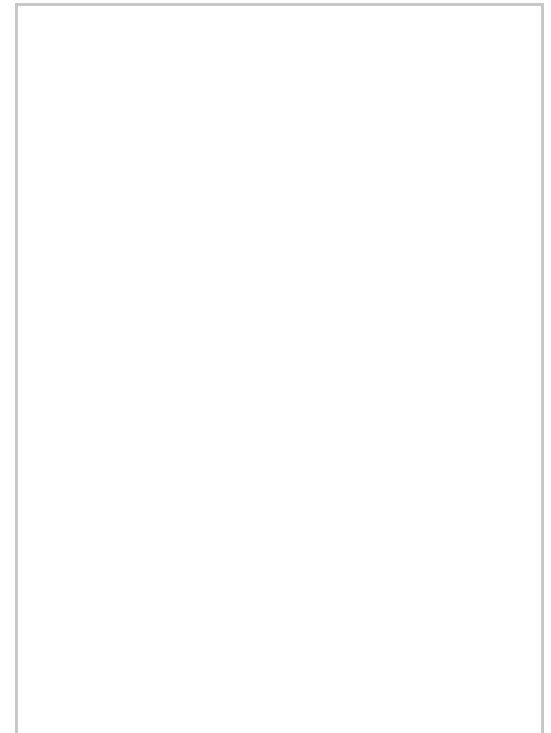
Moving through the accommodation and up to the first floor there is a spacious landing which services four bedrooms. The master bedroom is beautifully finished and is complimented with an en-suite and walk-in dressing room. Serving the remaining bedrooms is the family bathroom which like the en-suite is beautifully finished.

Stepping outside to the rear of the property, you'll find a sunny enclosed garden with a southerly aspect which is mostly laid to lawn with decking area and gated side access. Make this home your own and book your viewing today. Igomove are open 7 days a week.

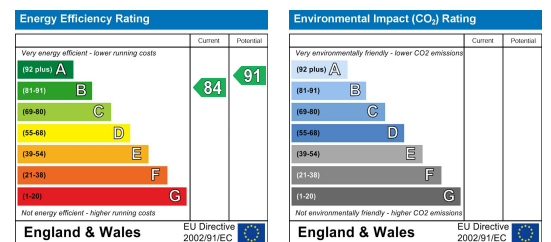
## Area Map



## Floor Plan



## Energy Efficiency Graph



These particulars, whilst believed to be accurate are set out as a general outline only for guidance and do not constitute any part of an offer or contract. Intending purchasers should not rely on them as statements of representation of fact, but must satisfy themselves by inspection or otherwise as to their accuracy. No person in this firm's employment has the authority to make or give any representation or warranty in respect of the property.