



37 Cornflower Close

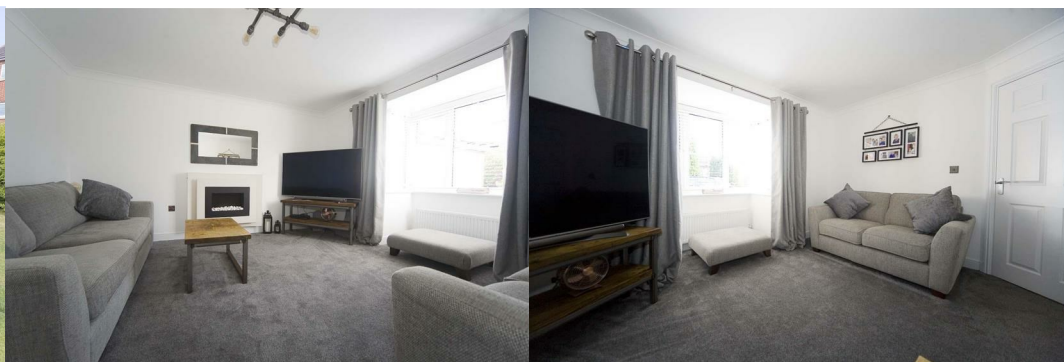
, Hartlepool, TS26 0WJ

Offers Over £279,000



LARGE PLOT WITH PLANNING FOR DOUBLE STOREY EXTENSION!! Absolutely beautifully presented and extended four bedroom house on an enviable end plot which benefits from an extensive array of desirable key attributes including; four well proportioned double bedrooms (master with delightful en suite facilities), fantastic family bathroom, excellent lounge, fabulous dining kitchen, useful upgraded utility room, modern guest cloakroom, sunny conservatory, extensive gardens, driveway, two garages, uPVC double glazing, gas central heating, Boiler installed March 2023 and still covered under a 5 year parts and labour warranty!! fitted blinds, impeccably presented and decorated throughout, solar panels, freehold.

Local Authority Hartlepool - Tax Band D



PLANNING PERMISSION GRANTED FOR A DOUBLE STOREY SIDE AND SINGLE STOREY REAR EXTENSION!! IMAGES UPLOADED TO GIVE ANY POTENTIAL NEW OWNER AN IDEA OF WHAT CAN BE DONE!!

Attractive modern facade, excellent end plot, easy maintenance garden, driveway, 2 x garages.

Front door into;

Entrance porch with front and side elevation windows, light and bright.

Entrance hallway with side elevation window, stairs to the first floor and under stairs storage cupboard, decorative coving, immaculate decor, laminate flooring which flows through.

Guest cloakroom recently refitted comprising close coupled push button toilet and vanity wash basin, heated towel radiator, stylish tiling and flooring.

Beautifully presented lounge with bay window to the front elevation, decorative coving, pristine decor, contemporary wall mounted fire surround with modern pebble fire.

Excellent dining kitchen fitted with an array of contemporary wall, base, larder and drawer cabinetry in fashionable colour palette, fitted wine rack, complimentary solid surfaces, integrated fridge freezer, integrated double oven, integrated hob, integrated extractor, stylish backsplash, inset sink with chrome mixer swivel tap, ample space for family sized dining table and chairs, recessed spotlights, decorative coving, superb flooring, cast iron radiator, impeccable decor, doors opening into the conservatory.

Recently upgraded utility room with plumbing for washing machine fitted in keeping with the kitchen with base cabinets, drawer unit, stainless sink with American style jet swivel mixer tap, solid work surfaces, half glazed external door.

Sunny conservatory with French doors opening to the rear garden, neutrally presented with contemporary flooring and benefitting from fitted blinds.

To the first floor;

Master double bedroom with window to the front elevation, immaculately presented and with access to;

Pristine en suite comprising oversized shower enclosure, close coupled WC and pedestal wash basin in white porcelain with chrome fittings, beautiful tiling.

Bedroom two is a further double located to the rear, superb decorative order.

Bedroom three is another double situated to the rear of the property, immaculate decor.

The sumptuous family bathroom comprises bath with shower head taps, stylish hidden cistern WC and vanity wash basin with solid granite countertop, fabulous tiling and flooring.

To the second floor;

Bedroom four is a large double with twin velux windows to the rear, pristine decor.

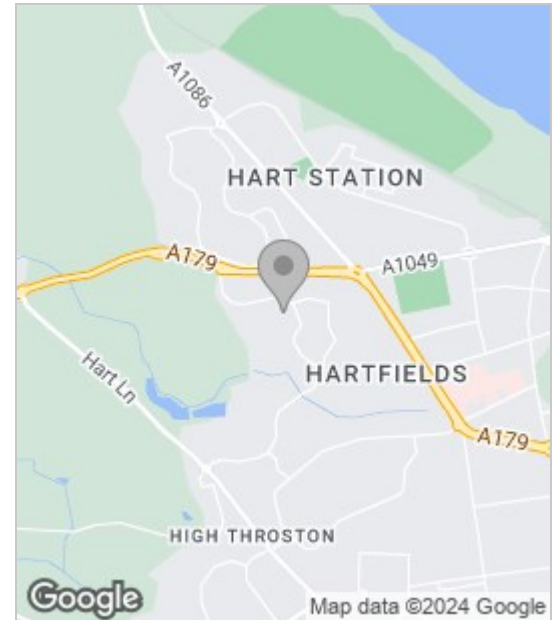
Dressing room immaculately presented.

To the rear/ side is a huge enclosed lawned, sunny garden with decking areas, garden shed, artificial lawned play area, fabulous Indian sandstone patio and established shrubbery which provides a great deal of privacy.

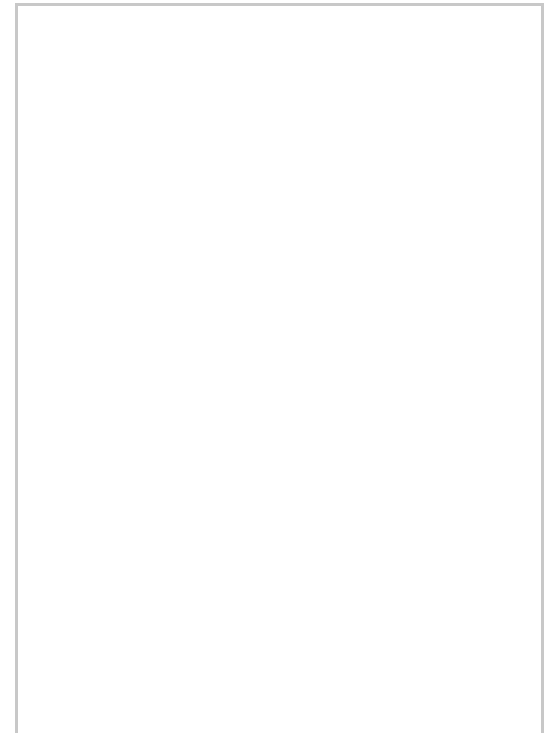
This stunning home in a sought after location is sure to be a popular choice with discerning prospective purchasers and we envisage it will be in high demand, contact the Igomove team today to view.

These particulars, whilst believed to be accurate are set out as a general outline only for guidance and do not constitute any part of an offer or contract. Intending purchasers should not rely on them as statements of representation of fact, but must satisfy themselves by inspection or otherwise as to their accuracy. No person in this firm's employment has the authority to make or give any representation or warranty in respect of the property.

Area Map



Floor Plan



Energy Efficiency Graph

