



## 15 Church Street

Hesleden, Hartlepool, TS27 4PP

**£79,999**

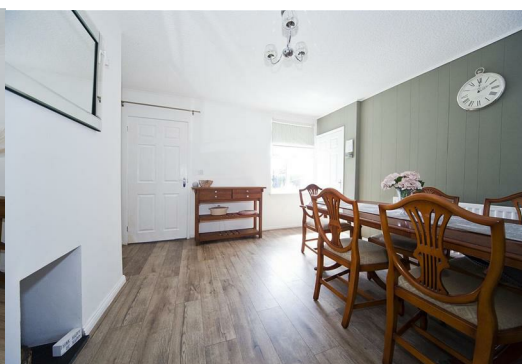


\*\*\* STUNNING 2 BEDROOM HOME \*\*\* RURAL VILLAGE LOCATION \*\*\*

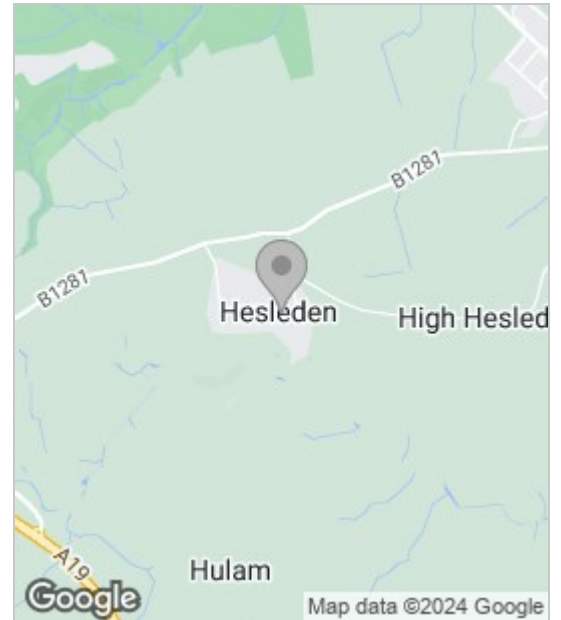
We are excited to bring to the market this absolutely beautiful 2 bedroom mid terraced home situated in the quaint village of Hesleden, County Durham. Having immediate access to major commuting routes such as the A19 as well as direct links to neighbouring towns in Hartlepool & Peterlee.

This charming property has been well cared for through the years and offers a wealth of desirable features such as: Gas central heating, uPVC double glazing, rear courtyard, access to woodland walks, 2 reception rooms, multi fuel burning stove and more.

The internal layout comprises: entrance vestibule, large welcoming family lounge, dining area, well equipped kitchen, rear lobby and ground floor Bathroom/WC



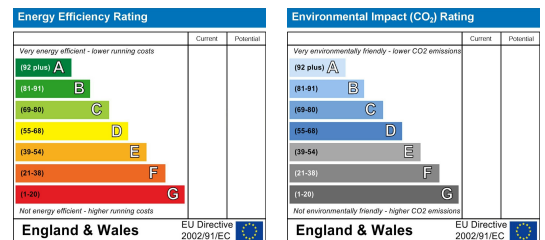
## Area Map



## Floor Plan



## Energy Efficiency Graph



These particulars, whilst believed to be accurate are set out as a general outline only for guidance and do not constitute any part of an offer or contract. Intending purchasers should not rely on them as statements of representation of fact, but must satisfy themselves by inspection or otherwise as to their accuracy. No person in this firm's employment has the authority to make or give any representation or warranty in respect of the property.