



12 Jack Lawson Terrace

Wheatley Hill, Durham, DH6 3RT

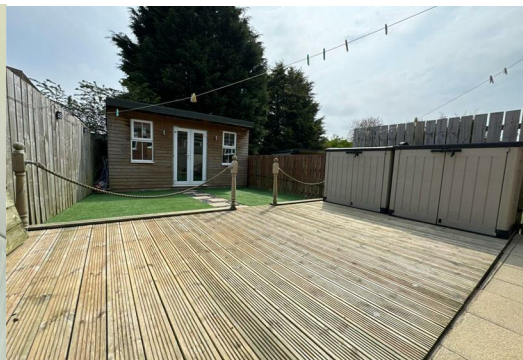
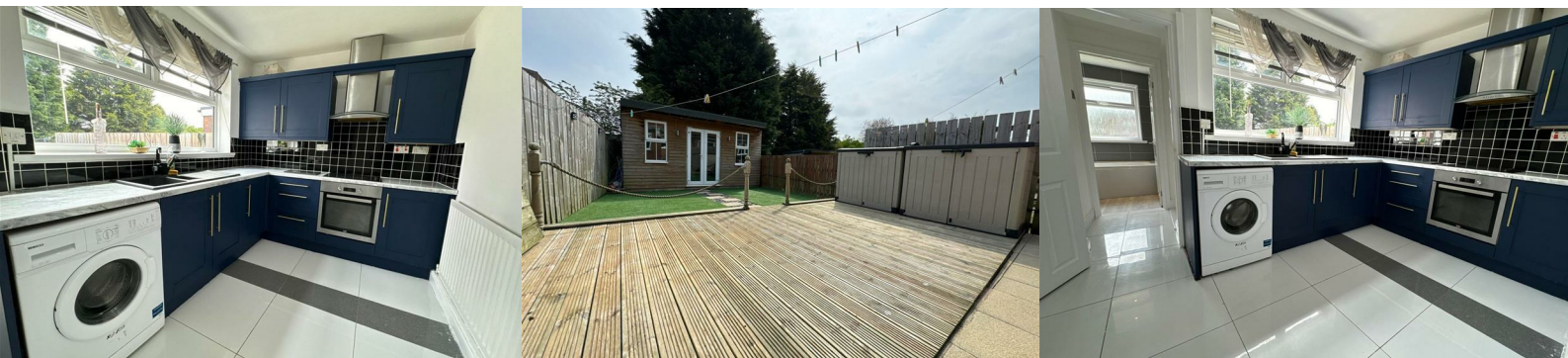
Offers Over £75,000



Video Tour available below

*** ATTENTION FIRST TIME BUYERS *** BAR TO THE REAR ***

Offered to the market at a competitive price is this well kept, 2 bedroom semi detached property situated on Jack Lawson Terrace, Wheatley Hill. Having excellent access to commuting routes such as the A19 in addition to a direct connection to Durham City, this property would make a great purchase to a first time buyer looking to start a family. Gas central heating, uPVC double glazing, front driveway, large rear, private garden with artificial turf, decking & paving leading to the bar, ideal for entertaining.



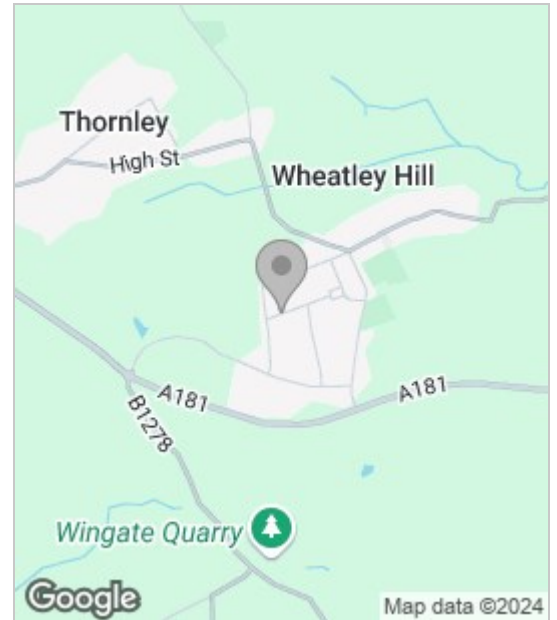
The internal layout comprises: entrance vestibule, large welcoming family lounge, through to the spacious kitchen/diner which has ample worktop & cabinet space, recess for appliances and access to the 'L' shaped family bathroom/WC.

To the first floor are 2 double bedrooms, bedroom two having a fixed staircase to loft space which would be ideal for storage.

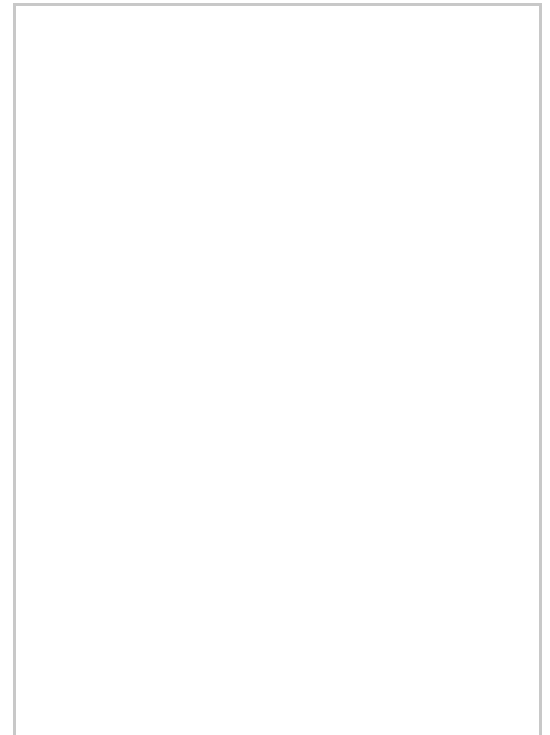
Externally to the rear is an impressive, low maintenance garden and bar with power and lighting, the front has a driveway for up to 2 cars.

Freehold
 EPC: TBC
 Council tax band A

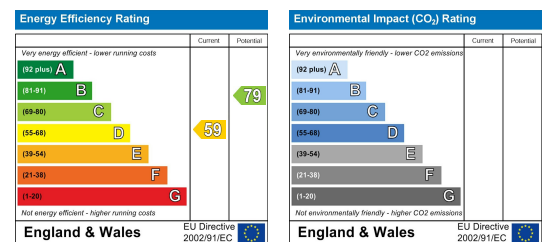
Area Map



Floor Plan



Energy Efficiency Graph



These particulars, whilst believed to be accurate are set out as a general outline only for guidance and do not constitute any part of an offer or contract. Intending purchasers should not rely on them as statements of representation of fact, but must satisfy themselves by inspection or otherwise as to their accuracy. No person in this firm's employment has the authority to make or give any representation or warranty in respect of the property.