



## 27 Caldey Gardens

Ingleby Barwick, Stockton-On-Tees, TS17 5HW

**£349,995**



In a serene neighbourhood, nestled amidst the highly sought after area of Ingleby Barwick, Igomove are delighted to present the fantastic opportunity to acquire this five bedroom, detached, family home. This stunning property will certainly appeal to families seeking a spacious and functional home offering generously sized living accommodation with a vast array of amenities only a stone throw away. In brief, the home comprises of five bedrooms, one bathroom, one en-suite, lounge, sitting room, kitchen, dining room, conservatory, utility room, downstairs WC and garage.

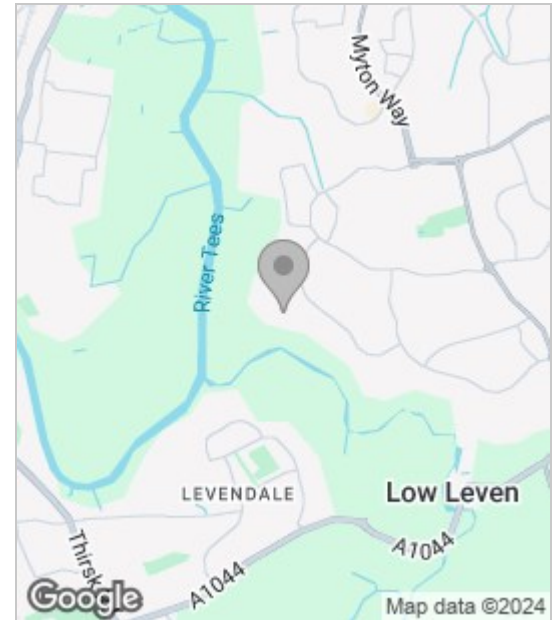


Upon stepping through the arched entrance, you're greeted by a lengthy hallway bathed in natural light. To the immediate left, a serene sitting room beckons, providing a tranquil space for quiet moments or lively conversations. To the right, a spacious lounge awaits offering a haven of relaxation. Connected seamlessly, the lounge flows into an interconnected dining room, ideal for entertaining or intimate gatherings with friends and family. Further on is the conservatory with its large glass windows that flood the room with natural light. Whether you're enjoying a leisurely breakfast bathed in morning sunlight or gathering with family, this interconnected area offers a versatile space that adapts to your every need. Continuing down the hallway as well as from the dining room, you're led to the heart of the home. The kitchen is a chef's delight featuring sleek, wall and floor units as well as ample storage. Just off the kitchen lies a utility with plumbing for a washing machine and space for further appliances. Completing the accommodation is the conveniently placed downstairs WC located under the stairs.

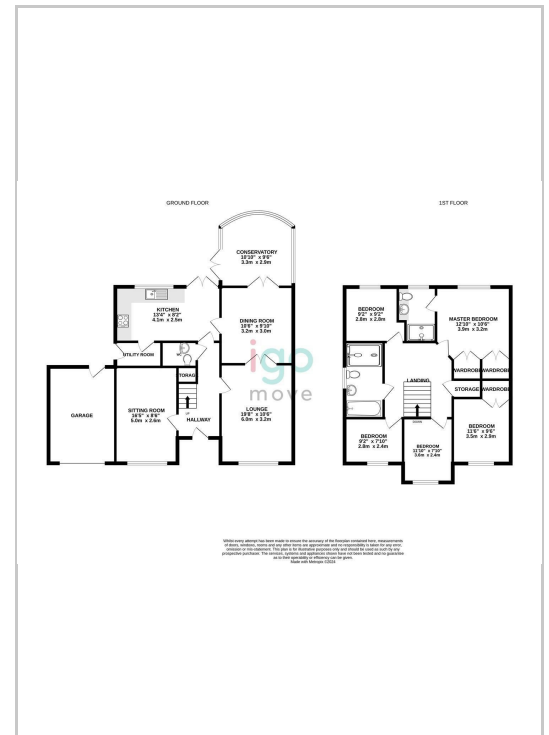
Ascending the staircase, you'll discover five well proportioned bedrooms, each thoughtfully designed to provide a sanctuary of comfort and tranquility. The master suite boasts spacious accommodation comprising of built in wardrobes and en-suite featuring a walk-in shower, low level wc and vanity unit and wash basin. Bedroom two also features fitted wardrobes while the remaining bedrooms offer ample space and privacy for family members or guests. The family bathroom offers functionality and style, catering to the needs of every member of the household. Comprising of a four piece suite, this light filled space features a walk-in shower, fitted bath, wash basin and low level wc.

Externally, the home benefits from an attractive frontage with a beautiful manicured lawn as well as a private driveway offering ample parking. To the rear, the enclosed garden offers endless possibilities for outdoor recreation and entertainment, perfect for the upcoming summer months. Make this home your own and book your viewing today. Igomove are open 7 days a week.

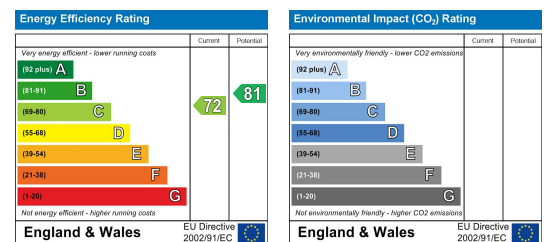
## Area Map



## Floor Plan



## Energy Efficiency Graph



These particulars, whilst believed to be accurate are set out as a general outline only for guidance and do not constitute any part of an offer or contract. Intending purchasers should not rely on them as statements of representation of fact, but must satisfy themselves by inspection or otherwise as to their accuracy. No person in this firm's employment has the authority to make or give any representation or warranty in respect of the property.