



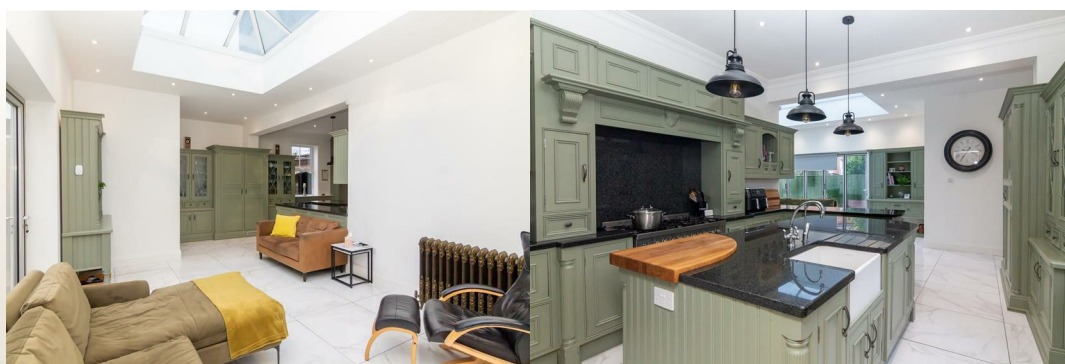
391 Normanby Road

, Middlesbrough, TS6 0BL

£399,995



Igomove are honoured to present this unique property that effortlessly combines the appeal of a spacious family home as well as an elegant entertaining space located on an large enviable plot. A luxurious home of impeccable standard, spread over two floors, situated in the highly sought-after residential area of Normanby. Presented in excellent decorative order, this house has been carefully extended and improved while maintaining and enhancing its original design features and details. It comes with no surprise, this exquisite home will come highly sought after as it truly is the home of dreams.

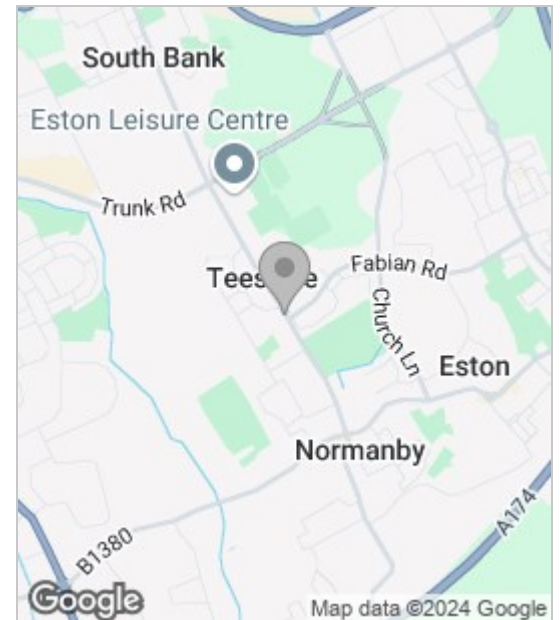


One arrives and is led down a private and lengthy drive surrounded by shrubbery and greens to either side. The picturesque property offers living accommodation that is carefully and beautifully appointed as well as extensively proportioned. Immediately, this property makes you feel like you could be anywhere in the world, from it's high enclosure and tall trees, you are greeted with a great sense of privacy. Walking through the front door, you are greeted into a haven which is this home. The entrance hall is welcoming and impactful. Two formal inter-connecting reception rooms are located off the hallway, both spacious, bright and airy with high ceilings. Adjacent to this, to front aspect is a tastefully decorated, cozy living space featuring a fireplace with stone surround making this an ideal sanctuary for those dark, chilly evenings. Moving down the lengthy hallway, the newly refurbished kitchen and living space awaits. With bespoke units made in Ireland, this kitchen is nothing short from a lucky charm. From it's beautiful green units and integrated appliances to it's instant hot water tap, this cooking space is where dreams are made. Around the corner lies the fresh extension offering a gorgeous living space flooded with natural light. Bi-Fold doors offer access to the outside seating area, nestled to the side of the property on stone paving. This tranquil setting is ideal for hosting gatherings throughout the summer while the sun scorches down. Following the external layout to the rear lies a work station, perfect to explore any creativity that lies within and further beyond this the rear courtyard and sheltered W/C that can be accessed from both the inside and out.

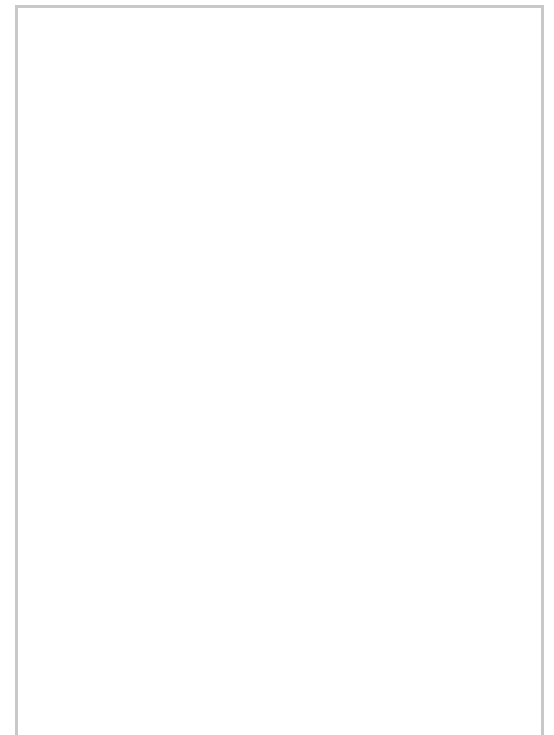
Moving onto the first floor, the staircase rises to the spacious, bright landing, fully lined with carpet. The main bedroom is luxuriously appointed to front aspect, enjoying a magnificent view of the front. Enjoying generous wardrobe space, it also features ample space for further decorative features. Conveniently placed right next door, is an impressive and spacious family bathroom with a free standing bath and large walk in shower. Bedroom two and three, are both of sizeable proportion, offering a great living space. The remaining bedroom completes the upstairs accommodation and is generously sized. This space could also be converted to a study room or play area, subject to the buyers desires. All rooms are tastefully decorated with a universal and modern feel as well as a sprinkle of vintage charm spread throughout.

This exceptional, four bed detached property as impressive at this, very rarely presents itself to the market. Do not miss out on the opportunity to snatch up this rare find. Book your viewing today, Igomove are open 7 days a week.

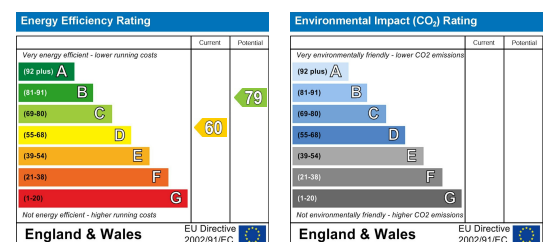
Area Map



Floor Plan



Energy Efficiency Graph



These particulars, whilst believed to be accurate are set out as a general outline only for guidance and do not constitute any part of an offer or contract. Intending purchasers should not rely on them as statements of representation of fact, but must satisfy themselves by inspection or otherwise as to their accuracy. No person in this firm's employment has the authority to make or give any representation or warranty in respect of the property.