



58 Golden Meadows

Golden meadows, Hartlepool, TS25 1GW

Prices from £185,000



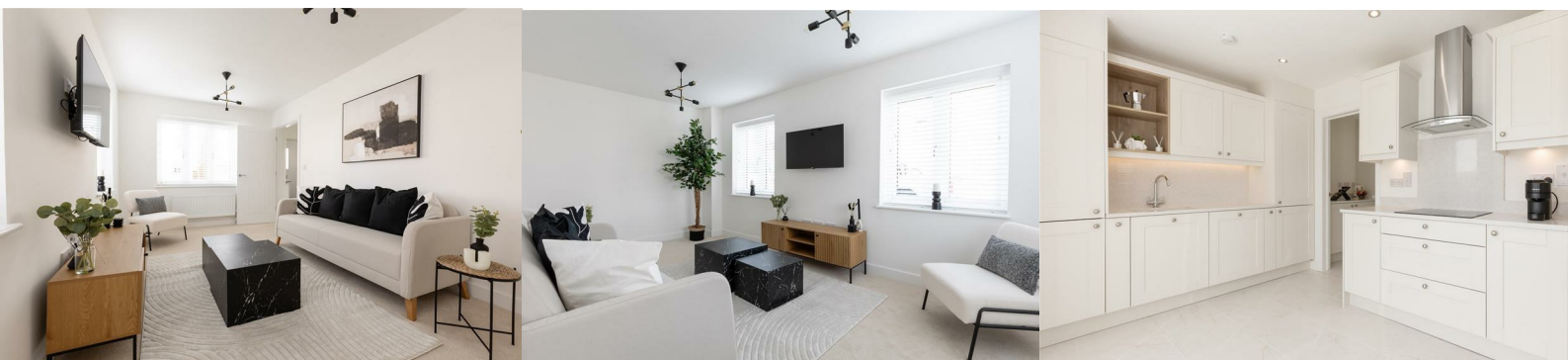
HUGE INCENTIVES AND MORTGAGE CONTRIBUTIONS!!

HARTLEPOOLS ONLY DEVELOPMENT WHERE YOU CAN CHOOSE YOUR VERY OWN FLOOR PLAN, WHERE ITS LIVING YOUR WAY!!

The Azure - An attractive double fronted, light and airy three bedroom semi-detached house, with a central hallway leading to a separate kitchen/diner and dual aspect lounge.

The kitchen is enhanced by French doors opening onto the rear garden and a spacious utility. To the first floor there are three bedrooms, the master benefiting from an ensuite.

Double fronted • Separate lounge and kitchen/diner • Attractive French doors from the kitchen, opening onto the garden • Utility • Private driveway



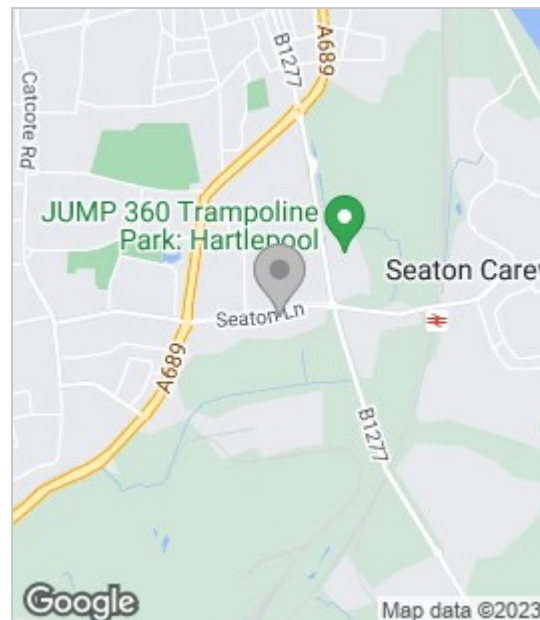
Seaton Meadows is a contemporary designed, high specification development. This development of two, three and four bedroom terrace, semi and detached homes will be built in two phases.

Located within walking distance of the beach at Seaton Carew with its amenities such as shops, cafes, bars, restaurants, crazy golf and beach huts, the location is ideal for all ages.

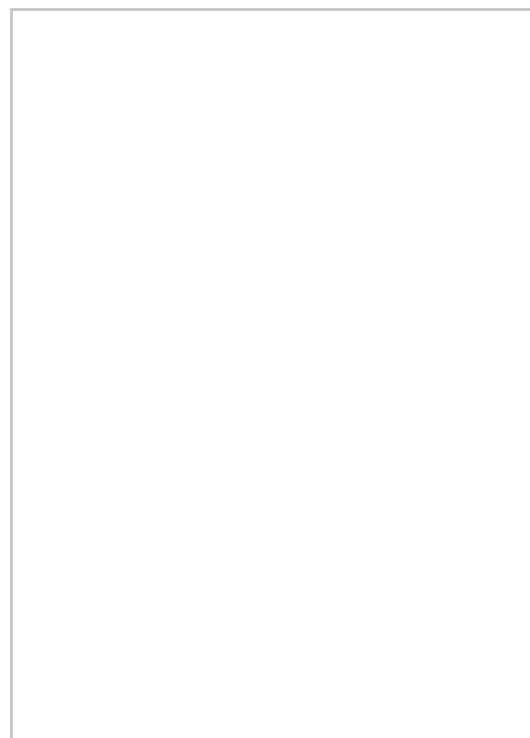
The development is easily accessible for commuting via the A689 to the A19 north and southbound and the A1M. Hartlepool railway station has local trains, together with a regular daily direct train to London. There is a choice of local nursery and primary schools within a close proximity to the development, with secondary schools, 6th forms and colleges just a short bus ride away.

The newly expanding Tees Bay Retail park is just a short stroll away with popular high street retailers and food outlets. This ideally situated development is perfect for first time buyers, second steppers and families looking to purchase a new, spacious and exciting home.

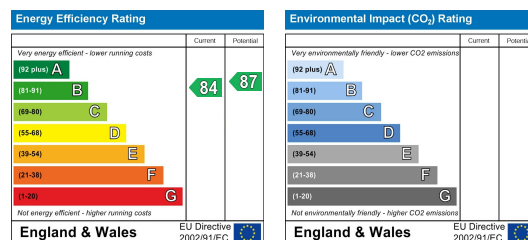
Area Map



Floor Plan



Energy Efficiency Graph



These particulars, whilst believed to be accurate are set out as a general outline only for guidance and do not constitute any part of an offer or contract. Intending purchasers should not rely on them as statements of representation of fact, but must satisfy themselves by inspection or otherwise as to their accuracy. No person in this firm's employment has the authority to make or give any representation or warranty in respect of the property.