



The Fuschia Seaton Meadows

Seaton Meadows, Hartlepool, TS25 1GH

£260,000



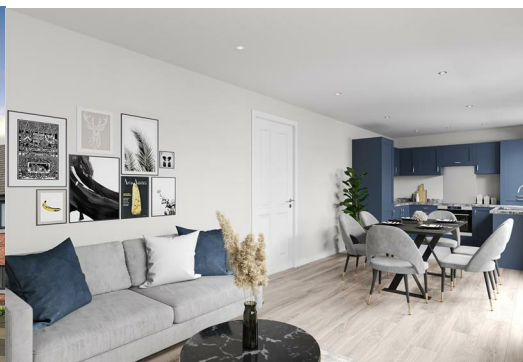
HUGE INCENTIVES AND MORTGAGE CONTRIBUTIONS

HARTLEPOOLS ONLY DEVELOPMENT WHERE YOU CAN CHOOSE YOUR VERY OWN FLOOR PLAN, WHERE ITS LIVING YOUR WAY!!

THE FUCHSIA - This wonderful property can be tailored to meet your living requirements!! With the option to pick your own floorplan options, this is a fabulous offering for a new build property. A well portioned four bedroom detached house that is ideal for a growing family. A large kitchen, family, dining space across the rear of the home benefits from a separate utility and windows and French doors that provide a plentiful view of the rear garden.

The kitchen and front facing lounge are accessed via a central hallway featuring a storage cupboard and cloakroom.

The first floor services four spacious bedrooms and family bathroom.



Seaton Meadows is a contemporary designed, high specification development. This development of two, three and four bedroom terrace, semi and detached homes will be built in two phases.

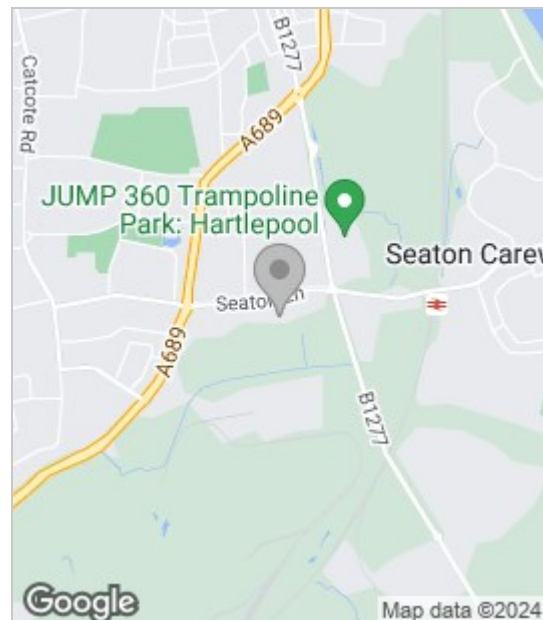
Located within walking distance of the beach at Seaton Carew with its amenities such as shops, cafes, bars, restaurants, crazy golf and beach huts, the location is ideal for all ages.

The development is easily accessible for commuting via the A689 to the A19 north and southbound and the A1M. Hartlepool railway station has local trains, together with a regular daily direct train to London. There is a choice of local nursery and primary schools within a close proximity to the development, with secondary schools, 6th forms and colleges just a short bus ride away.

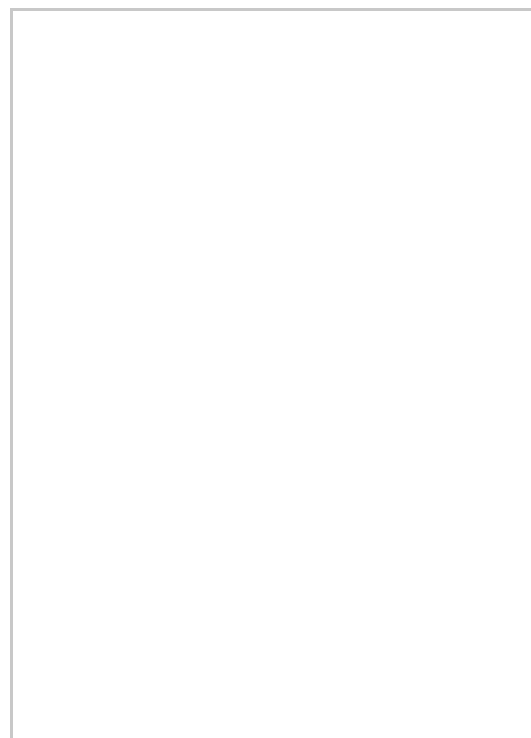
The newly expanding Tees Bay Retail park is just a short stroll away with popular high street retailers and food outlets. This ideally situated development is perfect for first time buyers, second steppers and families looking to purchase a new, spacious and exciting home.

Images are for illustration purposes only.

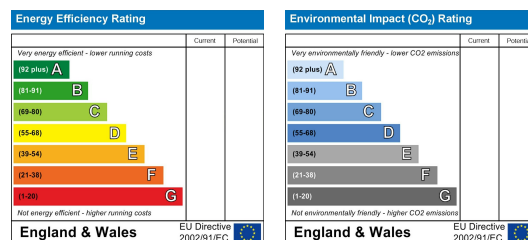
Area Map



Floor Plan



Energy Efficiency Graph



These particulars, whilst believed to be accurate are set out as a general outline only for guidance and do not constitute any part of an offer or contract. Intending purchasers should not rely on them as statements of representation of fact, but must satisfy themselves by inspection or otherwise as to their accuracy. No person in this firm's employment has the authority to make or give any representation or warranty in respect of the property.