



## 14 Lambton View

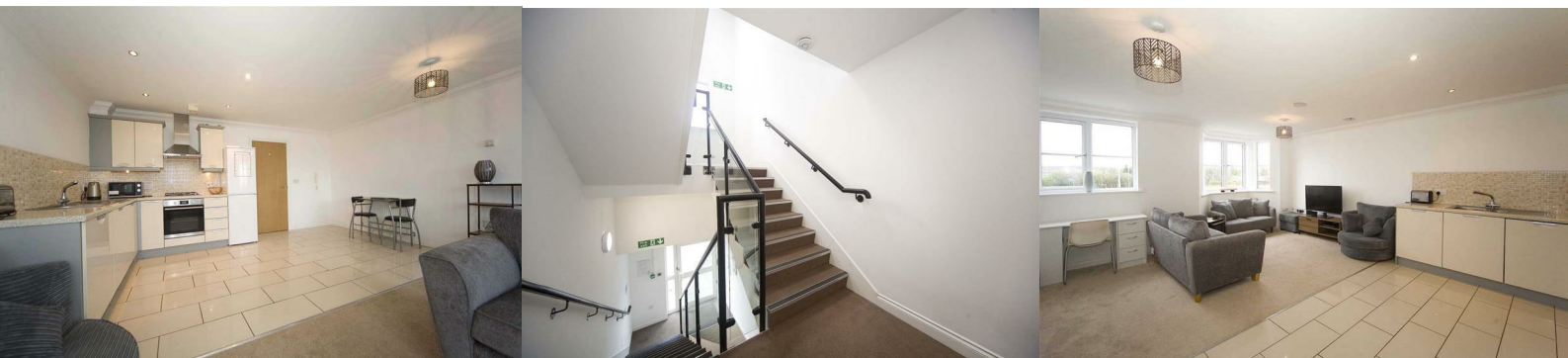
Rainton Gate, Houghton Le Spring, DH4 6QL

**Asking Price £100,000**



\*\*\* SOLD WITH A SITTING TENANT PAYING £545 PER MONTH \*\*\*

Igomove take pleasure in listing this superb self contained first floor, two bedroom apartment located in Lambton View, Rainton Meadow, this immaculate property is ideally situated for commuting to Durham and Sunderland, it offers several desirable features which include; two well proportioned bedrooms, fully tiled bathroom, contemporary open concept lounge/ diner/ kitchen, gas central heating, uPVC double glazing, superb views to the rear, well maintained grounds, allocated parking, leasehold. Durham county council tax band B, current energy rating B.



Contemporary purpose built apartment building, allocated parking, block paved areas, gardens with well maintained shrubbery, communal entrance with intercom entry system, stairs to the first floor.

Private entrance, entrance hall from which all rooms are accessed with fitted storage cupboard, neutrally decorated.

Contemporary open concept lounge/ diner/ kitchen with two windows ( one of which is a bay), decorative coving, spacious lounge and dining area with the kitchen comprising modern wall, base and drawer cabinetry, complimentary heat resistant surfaces, mosaic tiled backsplash, integrated oven, integrated gas hob, stainless multifunction extractor hood, space for fridge freezer, stainless sink with chrome mixer swivel tap, plumbing for washing machine, recessed spotlights, tiled floor.

Excellent bathroom comprising bath with over bath shower, WC and vanity wash basin combination unit, large fitted storage cupboard, recessed spotlights, fully tiled walls and floor.

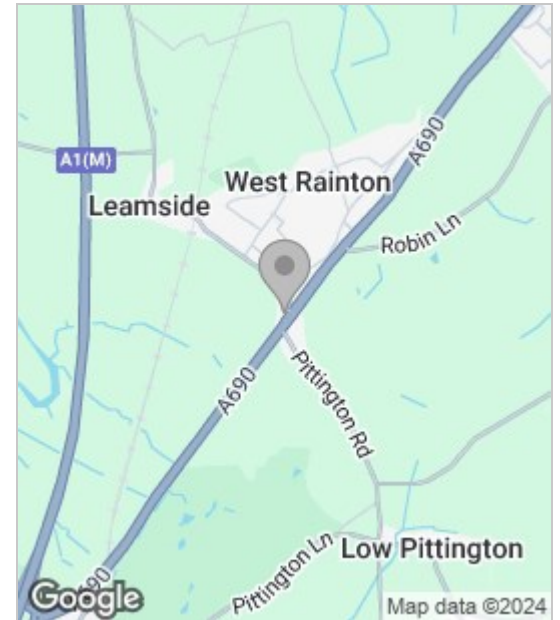
Bedroom one is a good sized double room with immaculate decor and decorative coving.

Bedroom two is a well proportioned single room with decorative coving and neutral decor.

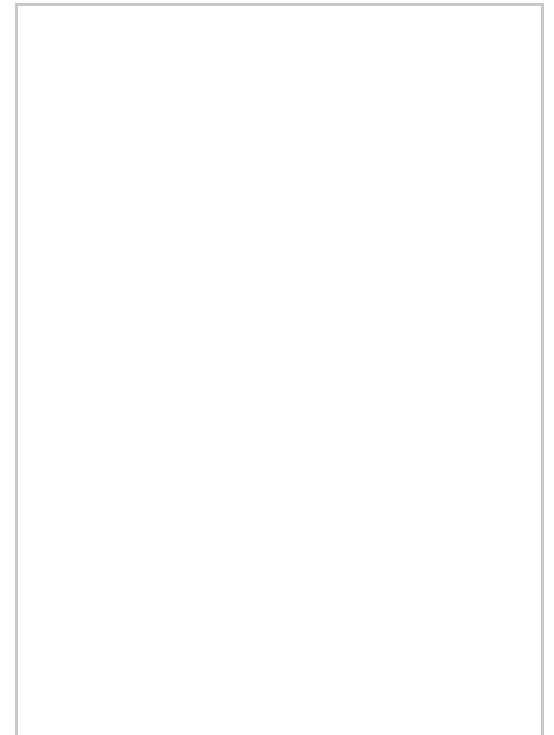
Outside this property benefits from allocated parking, communal grounds and stunning countryside views.

This neutrally presented, contemporary first floor apartment enjoys scenic views and is a must-see property, ideal for a first purchase or investment opportunity, contact Igomove at your first opportunity to view.

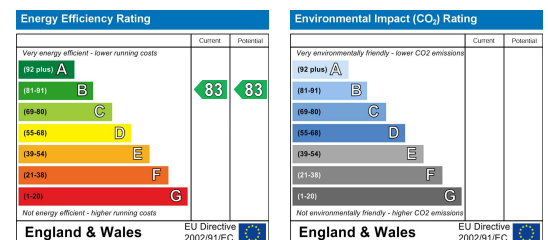
## Area Map



## Floor Plan



## Energy Efficiency Graph



These particulars, whilst believed to be accurate are set out as a general outline only for guidance and do not constitute any part of an offer or contract. Intending purchasers should not rely on them as statements of representation of fact, but must satisfy themselves by inspection or otherwise as to their accuracy. No person in this firm's employment has the authority to make or give any representation or warranty in respect of the property.