

Findings Lane, CM17 9HE  
Newhall









## Findings Lane, CM17 9HE

Discover modern living in Findings Lane, CM17 — a beautifully presented property ideal for professionals, couples, or small families.

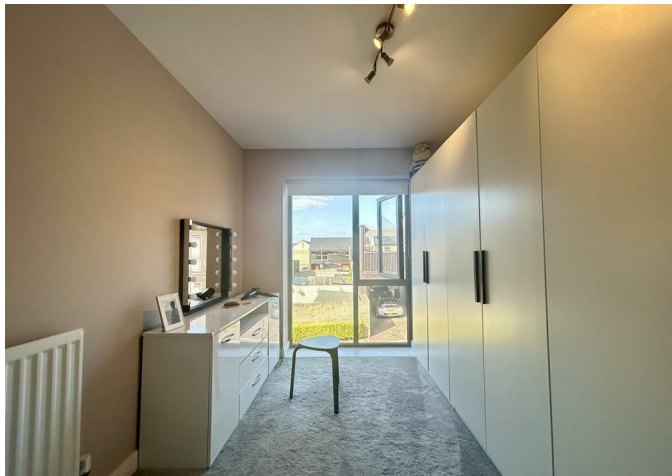
This detached, spacious home offers a bright and airy layout, featuring a stylish kitchen, comfortable living area, and well-proportioned double bedrooms.

Situated in a quiet, sought-after neighborhood, the property benefits from excellent transport links, local amenities including Harlow Innovation Park and nearby Pre school, Primary and secondary schools.

Boasting 2 private garages ideal for storage or parking, plus 2 private parking spaces.

Enquire today to book into our open day!

**£1,695 Per Month**



- Available late August with potential to become available earlier
- Flexible on furnishing status
- Parking for 4 cars including 2 garages!
- Both double bedrooms
- EPC Rating B
- Ensuite
- Detatched
- Property under 10 years old
- PLEASE NOTE - THIS PROPERTY DOES NOT HAVE A PRIVATE GARDEN
- Short walk to Harlow Innovation Park

















