



Thistle Grove, AL7 4AQ
Welwyn Garden City

kings
GROUP





Thistle Grove, AL7 4AQ

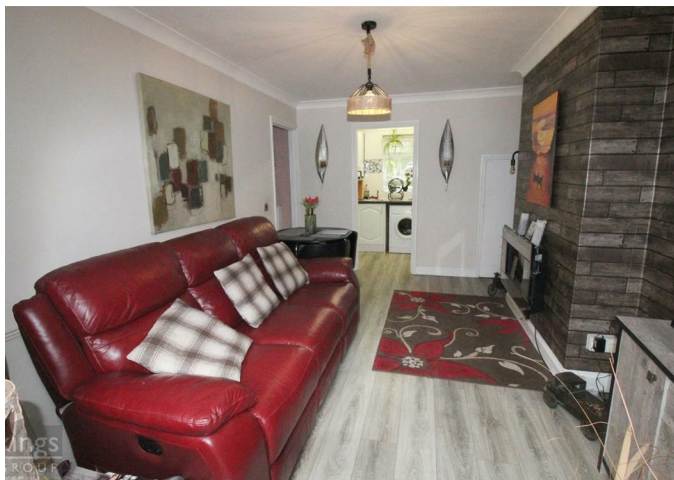
Spacious ground floor apartment situated in the highly desired Hallgrove area of Welwyn Garden City located close to shops and access to Hertford and Hatfield!

This apartment boasts excellent size double bedroom, contemporary bathroom suite with bath and shower, large living area with space for dining which leads out onto the rear communal garden with additional private area which overlooks peaceful woodland!

On street parking available, private locked outdoor storage, secure communal block with intercom!

Available 22nd June to move in! Enquire today to book into our open day on Monnday 9th June!

£1,025 Per Month



- Council tax band B
- Available 22nd June
- Ground floor
- Communal garden
- 12 month tenancy with option to renew

- 409 sq ft
- Rear garden
- EPC Rating C
- Private terrace area
- OPEN DAY VIEWING MONDAY 9TH JUNE - APPOINTMENT ONLY

