



Milestone Road, CM17 9NW  
Essex





# Milestone Road, CM17 9NW

\*\* AVAILABLE JUNE \*\*

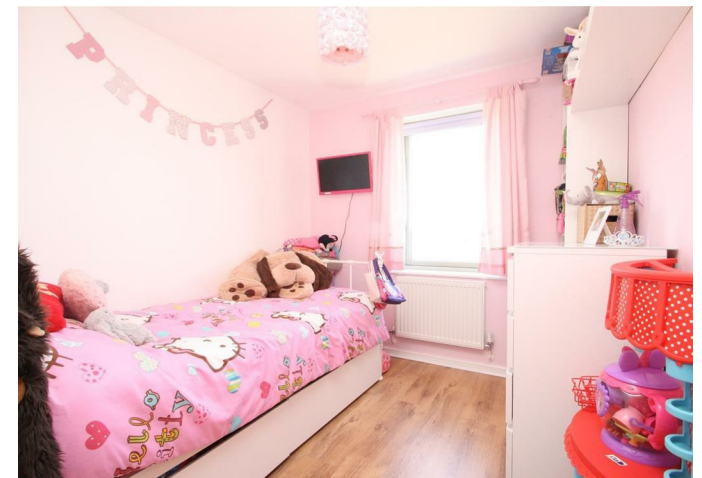
Stunning 2 bedroom apartment located in the desirable CM17 development New Hall - just moments walk to KAO Park & Harlow Innovation Park!

This popular development has excellent public transport links into the town centre and Harlow town station and is a walkable distance to Harlow Mill station! The quiet area offers masses of field area and independent coffee shops and restaurants!

This property offers two excellent size bedrooms, contemporary bathroom, modern kitchen with integrated white good, spacious lounge with room for dining !

Offered with allocated parking, secure communal entrance and front communal balcony! Available 14th June - call today to book into our open day on Thursday 18th April - limited spaces available!

£1,375 PCM



- Available 14th June
- Both excellent size bedrooms
- Council tax band C
- Allocated parking
- Moments walk to KAO Park & Harlow Innovation Park

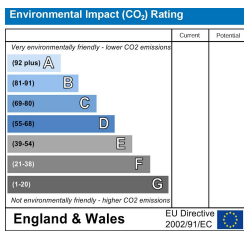
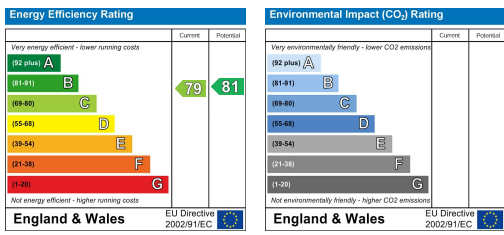
- Highly desirable location of Newhall
- 12 month tenancy with option to renew
- EPC Rating C
- Excellent public transport links into town and station
- Modern interior











THE PROPERTY MISDESCRIPTIONS ACT 1991. The agent has not tested any apparatus, equipment, fixtures or services and so cannot verify that they are in working order, or fit for the purpose. References to the Tenure of a property are based on information supplied by the vendor. The agent has not had sight of the Title documents. A buyer is advised to obtain verification from their Solicitor or Surveyor. Note: These details are correct at time of going to press.

28 Maidenhead Street, Hertford,  
Hertfordshire, SG14 1DR  
T: 01992 586570  
E:  
www.kings-group.net

