



3 Bedrooms

Semi-Detached House

Located in Blackwater

Guide Price £485,000



basingstoke@collins-
residential.co.uk

www.collins-residential.co.uk

01256 224597



11 Wright Avenue Blackwater GU17 9FL



COLLINS RESIDENTIAL

Presents this immaculate newly built three bedrooomed semi-detached home. Further benefits include lounge, luxury kitchen dining room with built in appliances, cloakroom, luxury bathroom and en suite, low maintenance rear garden, detached garage and driveway parking. Ideal first time buy purchase.





11 Wright Avenue

£485,000 Freehold

SEMI DETACHED

THREE BEDROOMS

LOUNGE

KITCHEN DINING ROOM

BATHROOM

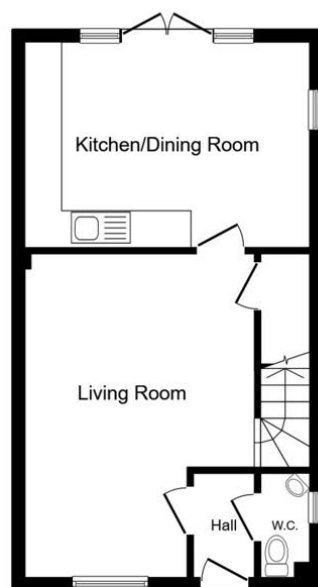
EN SUITE

CLOAKROOM

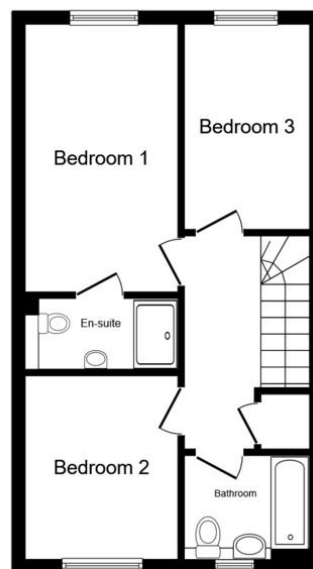
REAR GARDEN







Ground Floor
Floor area 40.6 sq.m. (437 sq.ft.)



First Floor
Floor area 40.6 sq.m. (437 sq.ft.)

Total floor area: 81.2 sq.m. (874 sq.ft.)

This floor plan is for illustrative purposes only. It is not drawn to scale. Any measurements, floor areas (including any total floor area), openings and orientations are approximate. No details are guaranteed, they cannot be relied upon for any purpose and do not form any part of any agreement. No liability is taken for any error, omission or misstatement. A party must rely upon its own inspection(s). Powered by www.Propertybox.io

Council Tax Band : D

Agents Note: Whilst every care has been taken to prepare these particulars, they are for guidance purposes only. All measurements are approximate and are for general guidance purposes only and whilst every care has been taken to ensure their accuracy, they should not be relied upon and potential buyers/tenants are advised to recheck the measurements.

Energy rating and score

This property's energy rating is B. It has the potential to be A.

[See how to improve this property's energy efficiency.](#)

Score	Energy rating	Current	Potential
92+	A		96 A
81-91	B	84 B	
69-80	C		
55-68	D		
39-54	E		

12 New Street

Basingstoke, RG21 7DE

basingstoke@collins-
residential.co.uk

www.collins-residential.co.uk

01256 224597