



2 Bedroom

End Terraced House

Located in Whitchurch

Guide Price £350,000



basingstoke@collins-
residential.co.uk

www.collins-residential.co.uk

01256 224597



2 Richard Adams Way

RG28 7FJ



COLLINS RESIDENTIAL PRESENTS This stunning 2 bedroom end of terrace property located in Whitchurch that boasts a thoughtfully refurbished kitchen, downstairs WC, a light-filled living dining room and main bathroom. The property also includes a carport for 2 cars and a large garden. With modern finishes and ample space, this home is ideal for a small family or professionals looking for a comfortable and stylish living space.



2 Richard Adams Way

£350,000 Freehold

2 BEDROOM PROPERTY

2 DOUBLE BEDROOMS

END OF TERRACE

CAR PORT FOR 2 CARS



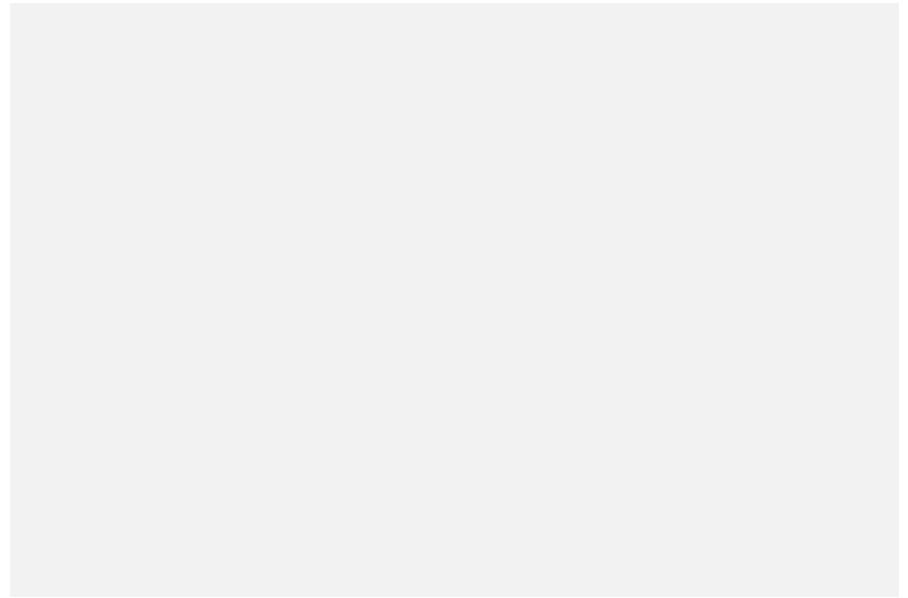
RECENTLY UPGRADED KITCHEN

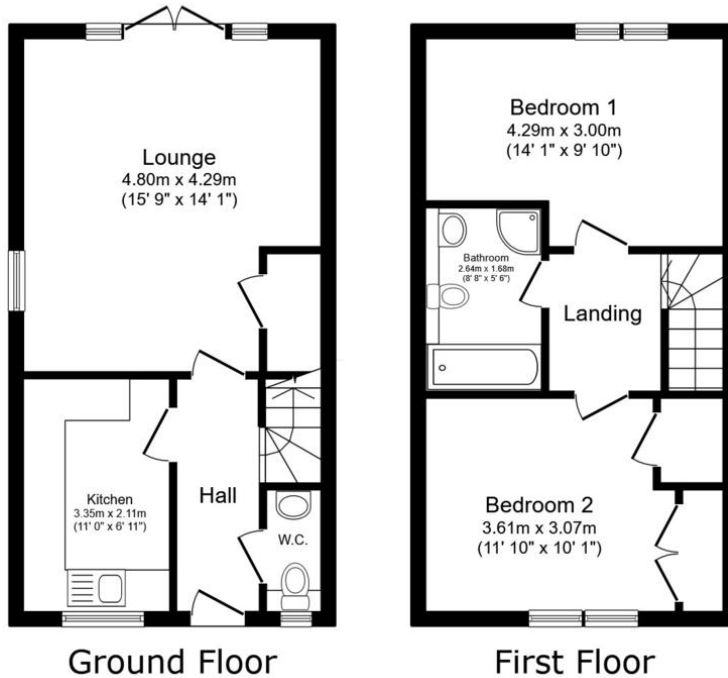
DOWNSTAIRS WC

EXCELLENT CONDITION THROUGHOUT

MODERN BUILD







Council Tax Band : C

Agents Note: Whilst every care has been taken to prepare these particulars, they are for guidance purposes only. All measurements are approximate and are for general guidance purposes only and whilst every care has been taken to ensure their accuracy, they should not be relied upon and potential buyers/tenants are advised to recheck the measurements.

Score	Energy rating	Current	Potential
92+	A		96 A
81-91	B	84 B	
69-80	C		
55-68	D		
39-54	E		
21-38	F		
1-20	G		

12 New Street
Basingstoke, RG21 7DE

This floor plan is for illustrative purposes only. It is not drawn to scale. Any measurements, floor areas (including any total floor area), openings and orientations are approximate.

basingstoke@collins-
residential.co.uk

www.collins-residential.co.uk

01256 224597