



## 2 ASHFORD DRIVE

BUXTON, SK17 9GQ

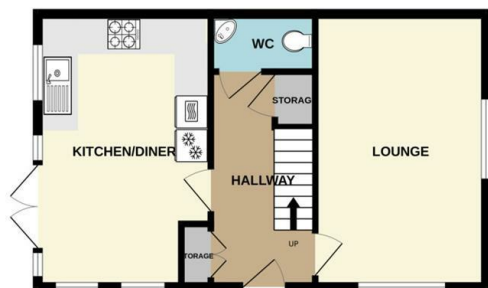
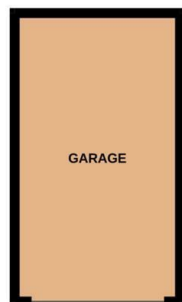
**£1,350 PER MONTH**

A modern recently constructed detached house occupying an excellent corner plot. Full gas central heating and UPVC double glazing. The property comprises : Hall, downstairs WC, Lounge, kitchen, bathroom, three bedrooms with master en-suite, detached garage, excellent garage.

**Crowther|Key**  
LETTINGS

GROUND FLOOR

1ST FLOOR



Whilst every attempt has been made to ensure the accuracy of the floorplan contained here, measurements of doors, windows, rooms and any other items are approximate and no responsibility is taken for any error, omission or mis-statement. This plan is for illustrative purposes only and should be used as such by any prospective purchaser. The services, systems and appliances shown have not been tested and no guarantee as to their operability or efficiency can be given.  
Made with Metropix ©2024



Energy Efficiency Rating		
	Current	Potential
Very energy efficient - lower running costs		
(92 plus) <b>A</b>		
(81-91) <b>B</b>		
(69-80) <b>C</b>		
(55-68) <b>D</b>		
(39-54) <b>E</b>		
(21-38) <b>F</b>		
(1-20) <b>G</b>		
Not energy efficient - higher running costs		
<b>England &amp; Wales</b>	EU Directive 2002/91/EC	

Agents Note: Whilst every care has been taken to prepare these particulars, they are for guidance purposes only. All measurements are approximate and are for general guidance purposes only and whilst every care has been taken to ensure their accuracy, they should not be relied upon and potential buyers/tenants are advised to recheck the measurements

Crowther Key Lettings  
Crowther House The Quadrant Buxton  
Derbyshire  
SK17 6AW

01298 214441  
lettings@crowtherkey.co.uk  
<https://www.crowtherkey.co.uk/>

**Crowther|Key**  
LETTINGS