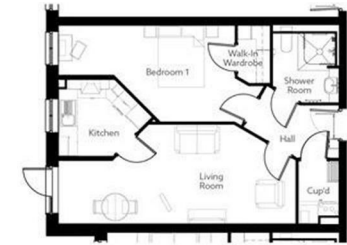




626 SQFT  
58.1 SQM



|                   |                 |                 |
|-------------------|-----------------|-----------------|
| Living (Max)      | 25'-2" x 10'-6" | 7670mm x 3211mm |
| Kitchen (Max)     | 10'-0" x 8'-1"  | 3041mm x 2474mm |
| Shower Room (Max) | 7'-1" x 7'-4"   | 2147mm x 2247mm |



## 4 DEVONSHIRE PLACE

BUXTON, SK17 6GP

£2,435 PER MONTH

A beautiful one-bedroom apartment measuring 626 square feet, ideally located on the ground floor boasting a East facing private patio. The spacious living room is decorated in a natural colour which gives a bright and airy feel. The fitted kitchen comes complete with integrated fridge freezer, ceramic hob, extractor fan and waist height oven. The master bedroom benefits from a walk-in wardrobe fitted with hanging space and shelving units. Finally, the shower room is complete with slip resistant flooring and a level access shower, a chrome towel radiator and a fitted mirror. This fantastic apartment comes complete with fitted flooring throughout.

Apartment 4 has been priced at £2,435PM

**Crowther|Key**  
LETTINGS



| Energy Efficiency Rating                    |                            |           |
|---|----------------------------|-----------|
|   | Current                    | Potential |
| Very energy efficient - lower running costs |                            |           |
| (92 plus) A                                 |                            |           |
| (81-91) B                                   |                            |           |
| (69-80) C                                   |                            |           |
| (55-68) D                                   |                            |           |
| (39-54) E                                   |                            |           |
| (21-38) F                                   |                            |           |
| (1-20) G                                    |                            |           |
| Not energy efficient - higher running costs |                            |           |
| England & Wales                             | EU Directive<br>2002/91/EC |           |

Agents Note: Whilst every care has been taken to prepare these particulars, they are for guidance purposes only. All measurements are approximate and are for general guidance purposes only and whilst every care has been taken to ensure their accuracy, they should not be relied upon and potential buyers/tenants are advised to recheck the measurements

Crowther Key Lettings  
Crowther House The Quadrant Buxton  
Derbyshire  
SK17 6AW

01298 214441  
lettings@crowtherkey.co.uk  
<https://www.crowtherkey.co.uk/>

Crowther|Key  
LETTINGS