

# Welcome to: 16 Yellowwood Drive, De Goede Hoop Estate

R35 000 000

Sole & Exclusive Mandate



6



1



3

Land Size

20 643m<sup>2</sup>

Floor Size

720m<sup>2</sup> (under roof)

Rates

R11 509.41pm

Levies

R 7 521.00pm

Lew Geffen

**Sotheby's**  
INTERNATIONAL REALTY



## Oasis of Light



Nestled in a tranquil cul-de-sac, this stunning 5-acre property on De Goede Hoop Estate is perfectly positioned between the picturesque Cape Vineyards and the iconic Chapman's Peak. Unparalleled sea and mountain views, along with an abundance of light, enhance the beauty of this exceptional location.

Spanning an impressive 720m<sup>2</sup>, this architecturally designed home offers a blank canvas for you to create your personal sanctuary. The cultivated "wild" garden boasts a diverse array of 24-year-old trees, including over 80 indigenous palms, fruit trees, proteas, fynbos, shrubs, carpets of plants, a dam, and pond, adding an enchanting and magical ambiance to your surroundings.





Double volume, open-plan living and dining area with large skylight and sliding doors opening to the garden with sea and mountain views.



Fire-place lounge.



Kitchen - looking on to the dam.



Bedroom 3 (downstairs) - sea and mountain views.



Bedroom 4 (downstairs) - with doors leading to the garden with sea and mountain views.



Bedroom 5 (downstairs).



Bedroom 6 (downstairs).





Upstairs landing.



Bedroom 1 (upstairs) - balcony with sea and mountain views.



Bedroom 2 (upstairs) - balcony and potential en-suite.



Bedroom 2 - view from balcony.





Enchanting and magical  
ambiance..

Just down the road, Noordhoek Farm Village awaits with its lively atmosphere, restaurants, bakery, homemade ice cream, and exquisite wines. Across the road are the tranquil Commons, shaded by ancient oaks and surrounded by equestrian facilities. Further down, beyond the dunes, step onto the 8km stretch of soft, white, world-renowned Long Beach, known for horse-riding, relaxed walks with your dogs, great waves for surfing, and breathtaking sunsets for sundowners.

With convenient access to medical professionals, veterinary services, yoga studios, a Virgin Active gym, shopping centers, top-notch schools, and golf courses, Noordhoek provides a unique lifestyle and excellent amenities - all within a 45-minute drive from Cape Town and the International Airport.





INSET: 3-Car Garage

DATE DRAWN: 25.08.2024

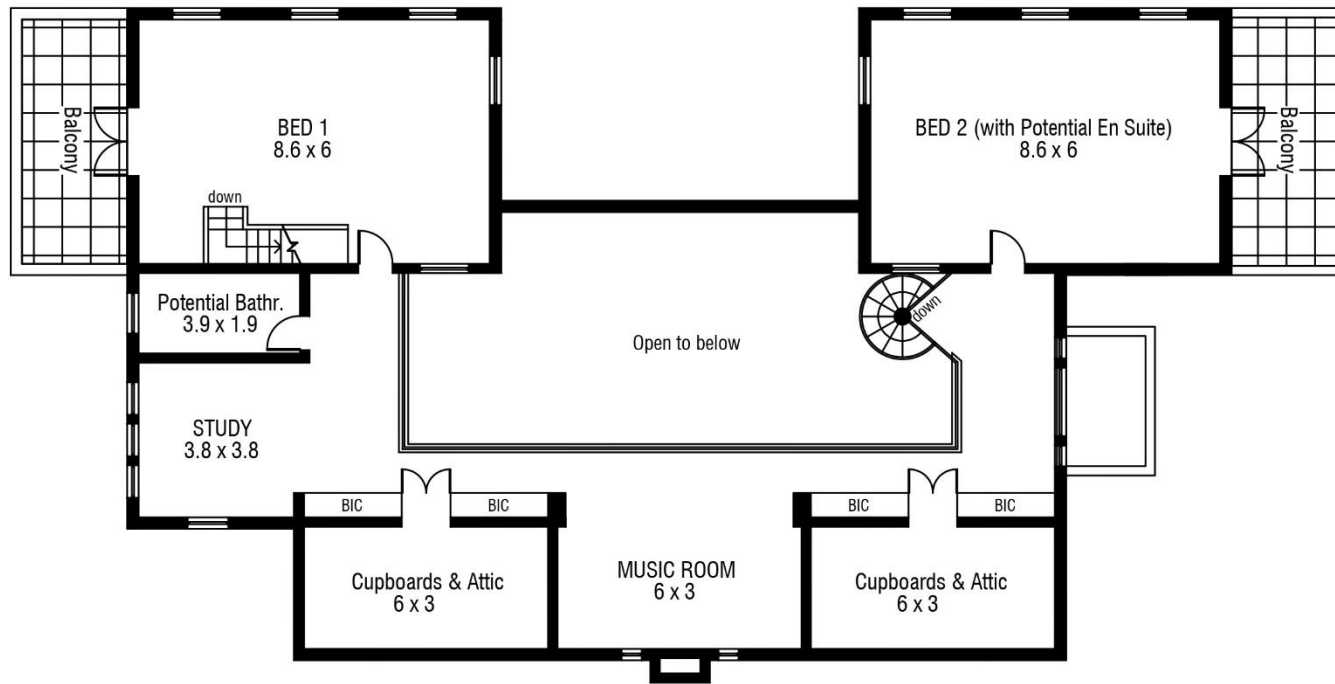
— A R E A S - (includes all walls)

SHEET 1 / 2

**16 Yellowwood Drive, De Goede Hoop Estate NOORDHOEK**

RESIDENCE - 642 m<sup>2</sup>  
3-CAR GARAGE - 66 m<sup>2</sup>

U/Cover Patios - 12 m2



FIRST FLOOR

DATE DRAWN: 25.08.2024

SHEET 2 / 2

**16 Yellowwood Drive, De Goede Hoop Estate**

**NOORDHOEK**

Accuracy of this floor plan is not  
guaranteed and no liability will be  
accepted for reliance placed on it.



# Nothing compares to what's next.

Lew Geffen | Sotheby's  
INTERNATIONAL REALTY



Lilian Bron

076 959 2733

[lilian.b@sothebysrealtyfb.co.za](mailto:lilian.b@sothebysrealtyfb.co.za)



Helen Smith

084 503 5464

[Helen.s@sothebysrealtynh.co.za](mailto:Helen.s@sothebysrealtynh.co.za)



From the owner: “In a world full of adversity, we dared to dream when we arrived in South Africa in 1992, drawn by the allure of something exciting and new. We fell in love with the magical view from across the Noordhoek Valley, the pristine beach, and the sea stretching towards an endless horizon. It was within this sense of wholeness, light, and space that we built our home - a safe and solid haven designed with a minimalist aesthetic and an emphasis on simplicity. We embraced an open, versatile space, mindful of the future and free from superfluous embellishments.”

[www.sothebysrealty.co.za](http://www.sothebysrealty.co.za)