

DURDEN & HUNT

INTERNATIONAL

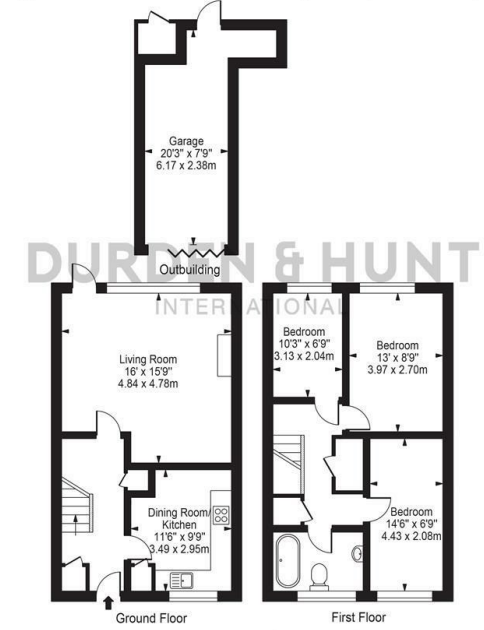


Asthall Gardens, Barkingside IG6

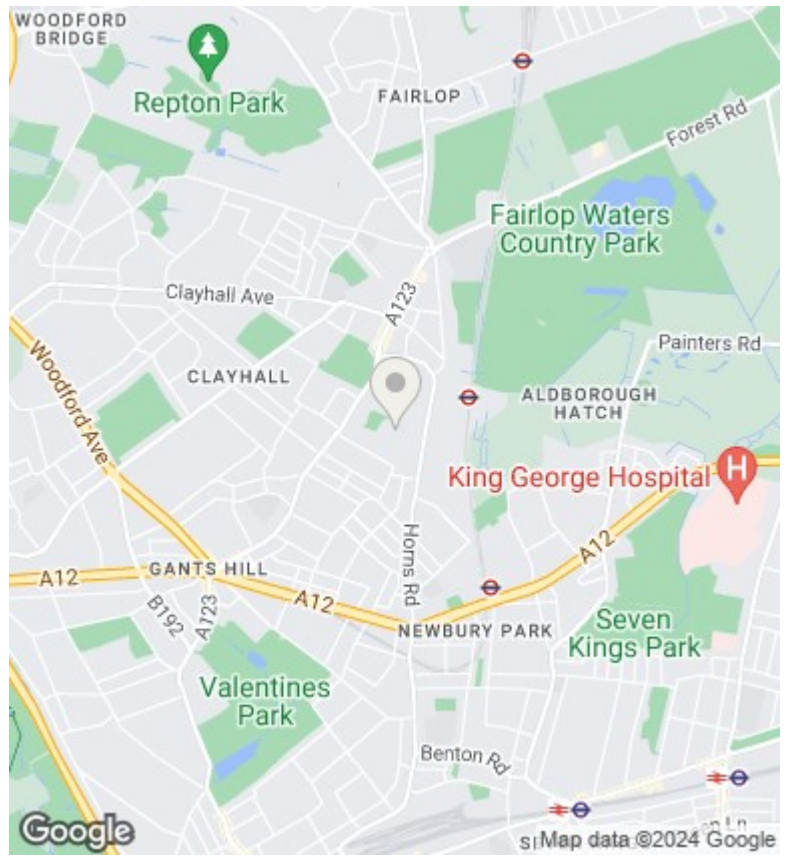
Offers In Excess Of £425,000

- Contemporary Kitchen Diner
- Family Bathroom
- Garage
- Good Sized Living Room
- Ample Storage
- Excellent Transport Links
- Three Bedrooms
- Front And Rear Gardens

Asthall Gardens
 Approx. Total Internal Area 1083 Sq Ft - 100.64 Sq M
 (Including Outbuilding)
 Approx. Gross Internal Area Of Outbuilding 176 Sq Ft - 16.36 Sq M



For Illustration Purposes Only - Not To Scale
 This floor plan should be used as a general outline for guidance only and does not constitute in whole or in part an offer or contract.
 Any intending purchaser or lessee should satisfy themselves by inspection, searches, enquiries and full survey as to the correctness of each statement.
 Any areas, measurements or distances quoted are approximate and should not be used to value a property or be the basis of any sale or let.



Viewings

Viewings by arrangement only. Call 0203 026 0160 to make an appointment.

Council Tax Band

D

EPC Rating:

C

| Energy Efficiency Rating | | Current | Potential |
|--|--|-------------------------|-----------|
| <i>Very energy efficient - lower running costs</i> | | | |
| (92 plus) A | | | 85 |
| (81-91) B | | | |
| (69-80) C | | 69 | |
| (55-68) D | | | |
| (39-54) E | | | |
| (21-38) F | | | |
| (1-20) G | | | |
| <i>Not energy efficient - higher running costs</i> | | | |
| England & Wales | | EU Directive 2002/91/EC | |