

DURDEN & HUNT

INTERNATIONAL



Johnston Road, Woodford Green IG8

£1,550 Per Month

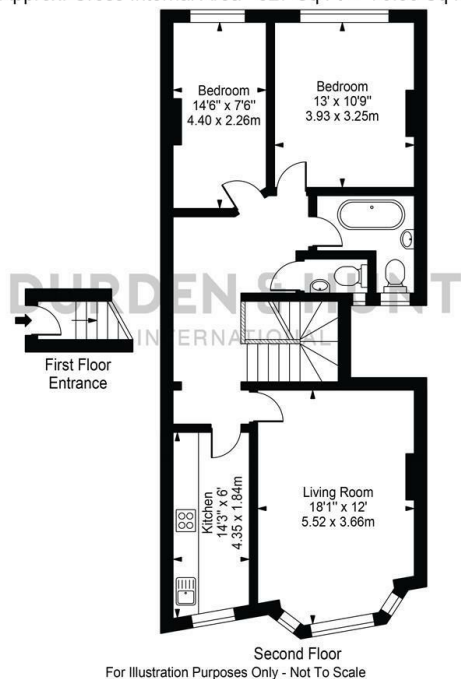
- Desirable Location
- Second Floor Apartment
- Separate Kitchen
- Excellent Transport Links
- Two Bedrooms
- Family Bathroom And Separate WC



309 High Road, Loughton, Essex, IG10 1AL
0203 026 0160

loughton@durdenandhunt.co.uk
<https://www.durdenandhunt.co.uk/>

Johnston Road
Approx. Gross Internal Area 827 Sq Ft - 76.86 Sq M



This floor plan should be used as a general outline for guidance only and does not constitute in whole or in part an offer or contract. Any intending purchaser or lessee should satisfy themselves by inspection, searches, enquiries and full survey as to the correctness of each statement. Any areas, measurements or distances quoted are approximate and should not be used to value a property or be the basis of any sale or let.

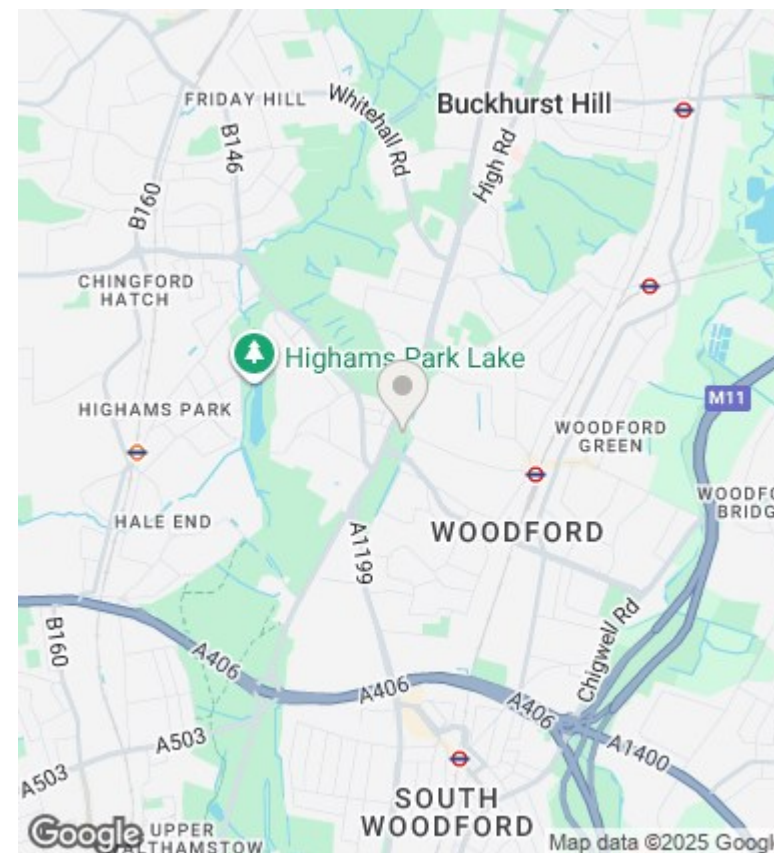
Viewings

Viewings by arrangement only. Call 0203 026 0160 to make an appointment.

Council Tax Band

C

EPC Rating:



Energy Efficiency Rating		
	Current	Potential
Very energy efficient - lower running costs		
(92 plus) A		
(81-91) B		
(69-80) C		
(55-68) D		
(39-54) E		
(21-38) F		
(1-20) G		
Not energy efficient - higher running costs		
England & Wales	EU Directive 2002/91/EC	