

DURDEN & HUNT

INTERNATIONAL



DURDEN & HUNT

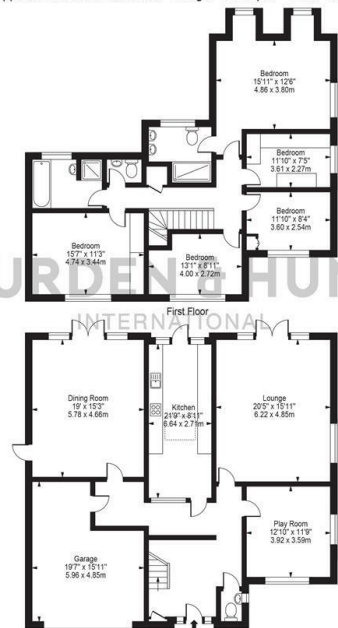
Westfield, Loughton IG10

£4,000 Per Month

- Garage And Off Road Parking
- Primary Bedroom With En Suite
- Downstairs WC
- Corner Plot
- Family Bathroom And WC
- Galley Kitchen
- Over 2,600 SQFT
- Multiple Reception Rooms
- Garden

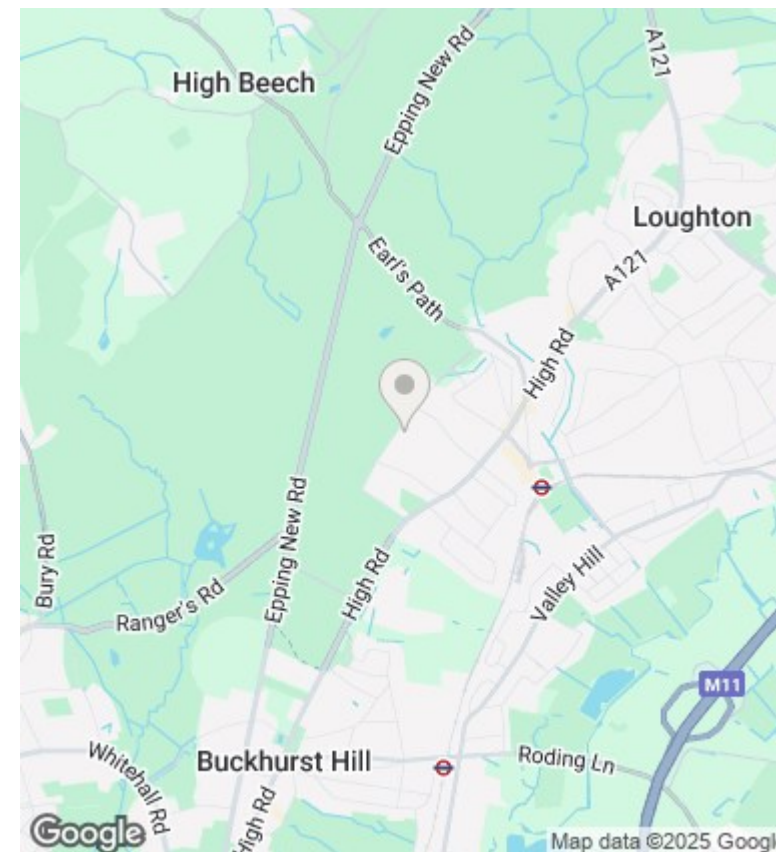


Westfield
 Approx. Total Internal Area 2636 Sq Ft - 244.85 Sq M
 (Including Garage)
 Approx. Gross Internal Area Of Garage 258 Sq Ft - 23.97 Sq M



For Illustration Purposes Only - Not To Scale

This floor plan should be used as a general outline for guidance only and does not constitute in whole or in part an offer or contract. Any intending purchaser or lessee should satisfy themselves by inspection, searches, enquiries and full survey as to the correctness of each statement. Any areas, measurements or distances quoted are approximate and should not be used to value a property or be the basis of any sale or let.



Viewings

Viewings by arrangement only. Call 0203 026 0160 to make an appointment.

Council Tax Band

G

EPC Rating:

D

